

FEATURES:

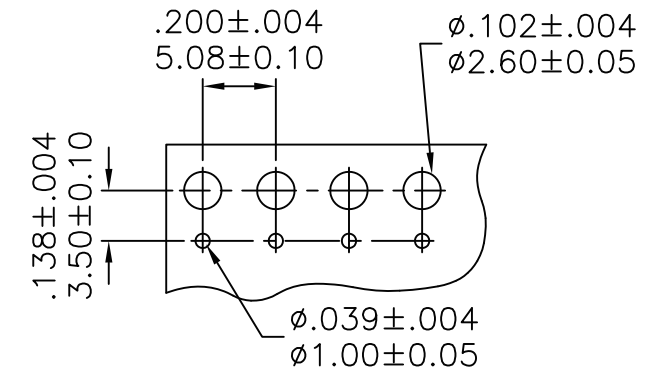
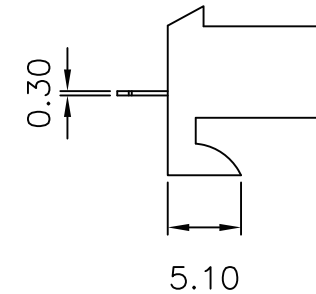
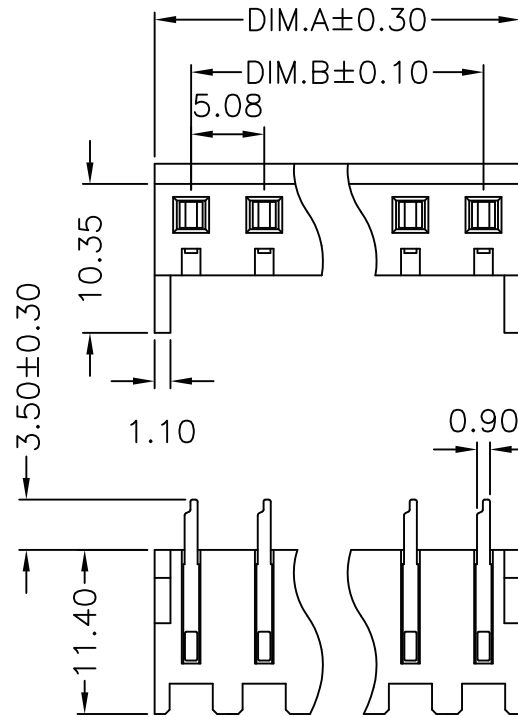
- . 2-20 Circuits
- . Housing, UL 94V-2 Nylon 6/6, Natural
- . Designed for parallel and perpendicular board stacking, also for PCB-to-harness PCB-to-chassis connection
- . Mates with .045"[1.14mm] square pins or round pins

SPECIFICATIONS:

- . Current rating: 7A AC. DC
- . Voltage rating: 250V AC. Maximum
- . Temperature range: -40°C ~ +105°C
- . Contact resistance: Initial Value/10mΩ max. After environmental testing /20mΩ max.
- . Insulation resistance: 5000 MΩ min
- . Withstand Voltage: 1500V AC/minute
- . Applicable PC board thickness: .063"[1.6mm]

PIN 數	DIM.A	DIM.B
02	10.16	5.08
03	15.24	10.16
04	20.32	15.24
05	25.40	20.32
06	30.48	25.40
07	35.56	30.48
08	40.64	35.56
09	45.72	40.64
10	50.80	45.72
11	55.88	50.80

PIN 數	DIM.A	DIM.B
12	60.96	55.88
13	66.04	60.96
14	71.12	66.04
15	76.20	71.12
16	81.28	76.20
17	86.36	81.28
18	91.44	86.36
19	96.52	91.44
20	101.6	96.52



Recommended Hole Dimensions

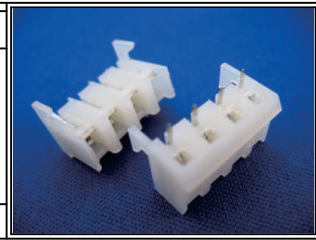
RoHS Compliant

TOLERANCES ARE

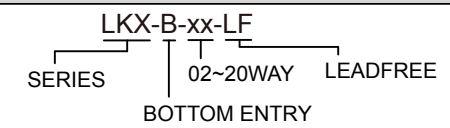
MORETHANALL
PCB CONNECTORS
Cable ASSEMBLIES

DRAWING BY CY
CHECKED BY GENIUS
UNIT/mm SCALE 1:1
DATE

X. ±
.X ±
.XX ±
.XXX ±
ANG ±



ORDER INFORMATION



煜倫股份有限公司

www.morethanall.com

SIZE A4 PROJECTION

DESCRIPTION: