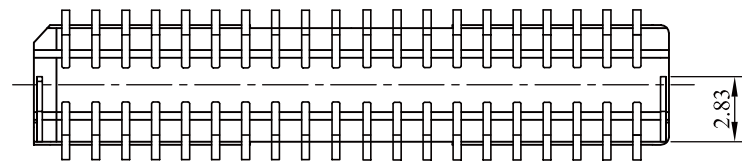
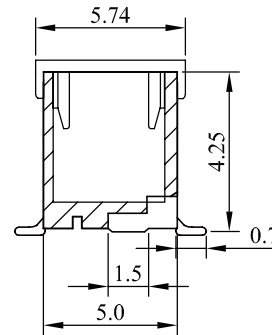
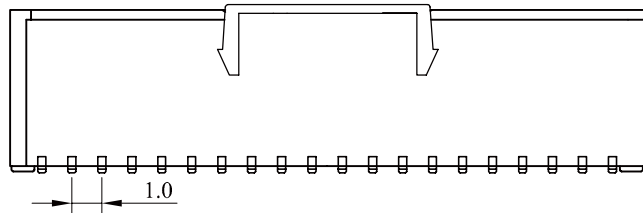


RECOMMENDED P.C. BOARD PATTERN DIM.



### Specifications

#### Electrical

- Voltage Rating: 50VAC DC
- Current Rating: 1.0A AC DC
- Contact Resistance: Initial value/20mΩmax  
After environmental testing/40mΩmax
- Insulation Resistance: 100MΩmin
- Temperature Range: -25°C~+85°C
- Withstanding voltage: 500V AC/minute

#### Material and Finish

- Header contact: Phosphor bronze, nickel-undercoated, gold-plated
- Water: Glass-filled polyamide, UL94V-0, natural (ivory)
- Solder tab: Brass, copper-undercoated, tin/lead-plated

Circuits	Dimension mm (in.)		Part No.	Note.
	A	B		
2*10	9.0(.354)	12.3(.484)	SHD-VGC-20	
2*15	14.0(.551)	17.3(.681)	SHD-VGC-30	
2*20	19.0(.748)	22.3(.878)	SHD-VGC-40	
2*25	24.0(.945)	27.3(1.075)	SHD-VGC-50	

RoHS Compliant

TOLERANCES ARE

**MORETHANALL**  
PCB CONNECTORS  
Cable ASSEMBLIES

煜倫股份有限公司

www.morethanall.com

DRAWING BY CY

CHECKED BY GENIUS

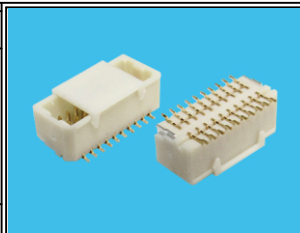
UNIT/ mm SCALE 1:1

DATE

SIZE A4

X, ±  
.X ±  
.XX ±  
.XXX ±  
ANG ±

PJECTION



#### ORDER INFORMATION

SHD-VXGC-xx-LF  
SERIES | LEADFREE  
20-50WAY  
CAP  
GOLD  
NON POST  
180°SMT

DESCRIPTION: SHD 1.0mm Wire to Board Wafer SMT 180W(雙排無柱)