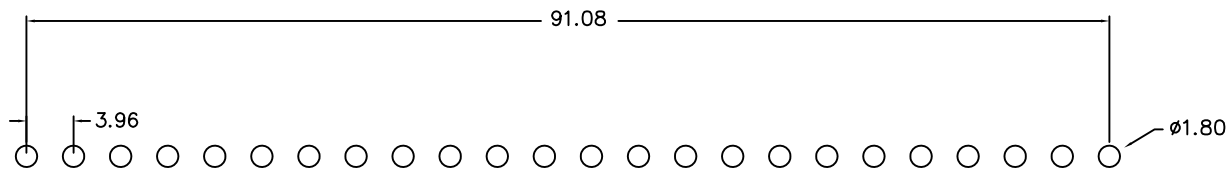
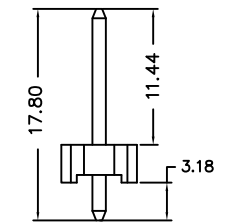
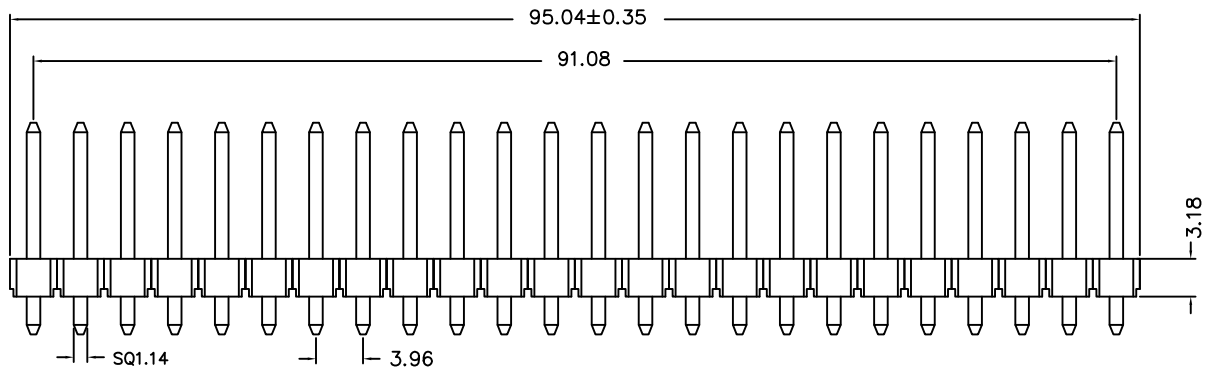


MATERIAL
Contact Pin : Brass

SPECIFICATION
Current Rate : 3 AMP
Insulation Resistance : 5000MΩMin. at DC 500V
Contact Resistance : 20mΩMax. at DC 100mA
Dielectric Voltage : AC 500V for one minute
Operation Temperature : -25°C to + 105°C



Recommended P.C.B. Layout

RoHS Compliant

TOLERANCES ARE

MORETHANALL
PCB CONNECTORS
Cable ASSEMBLIES

DRAWING BY CY

X, ±

CHECKED BY GENIUS

.X ±

UNIT / mm

SCALE 1 : 1

.XX ±

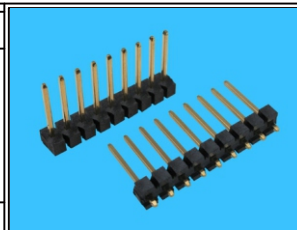
DATE

.XXX ±

SIZE A4

PPOJECTION

ANG ±



ORDER INFORMATION

H39-D31114031-1X24-LF
SERIES | | | | LEADFREE
| | | | 24 WAY
| | | | DIP 3.18mm
| | | | CONTACT 11.44mm
| | | | BASE 3.18mm
| | | | DIP 180°

煜倫股份有限公司

www.morethanall.com

DESCRIPTION: