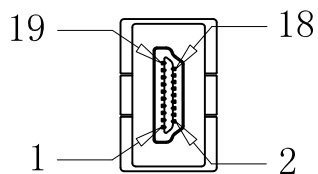


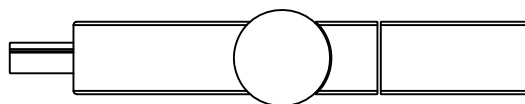
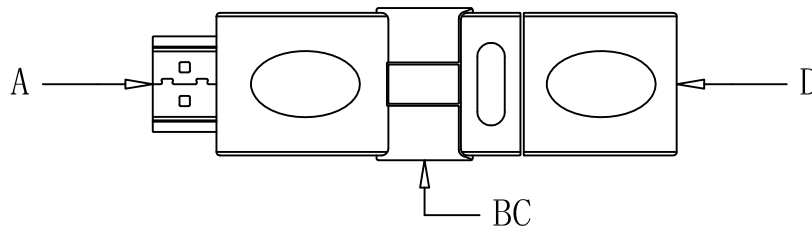
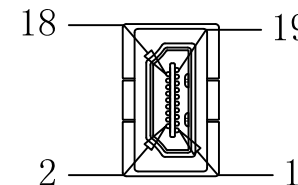
### 接线方式

P1	P2
1	1
2	2
3	3
4	4
5	5
6	6
7	7
8	8
9	9
10	10
11	11
12	12
13	13
14	14
15	15
16	16
17	17
18	18
19	19

P1



P2



#### 物料表:

项目	详细	用量
A: HDMI/公	PIN针镀金, 铁壳镀金.	1PC
B: 外膜料	黑色ABS料.	KG
C: 内膜料	电子引线	KG
D: HDMI/母	PIN针镀金, 铁壳镀金.	1PC

#### 测试要求:

- 1) 100%断短路检测。
- 2) 导通阻抗5Ω。
- 3) 绝缘阻抗5MΩ。
- 4) 高压300V DC。

铁壳

铁壳

RoHS Compliant

TOLERANCES ARE

**MORETHANALL**  
PCB CONNECTORS  
Cable ASSEMBLIES  
**煜倫股份有限公司**

DRAWING BY CY

CHECKED BY GENIUS

UNIT / mm SCALE 1 : 1

DATE

SIZE A4

X, ±  
.X ± 0.30  
.XX ± 0.20  
.XXX ± 0.10  
ANG ±

PPOJECTION



#### ORDER INFORMATION

HDMIX2-EMRT-1919-LF

SERIES | LEADFREE  
19 PIN TO 19 PIN  
ROTARY  
MOLDING  
MALE TO FEMALE

DESCRIPTION: HDMI A Plug TO HDMI A Receptacle 360度

www.morethanall.com