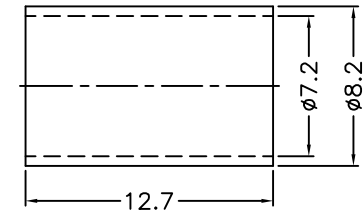
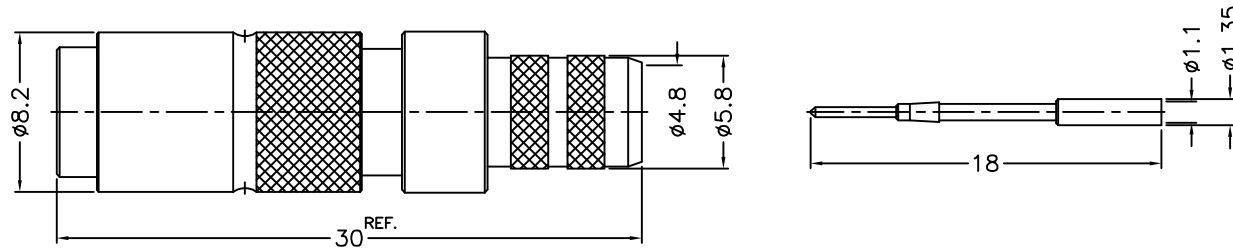


RECOMMENDED
CABLE STRIPPING DIM'S
(建議剝線尺寸)



NOTES: FINISH (PLATING THICKNESS IN MICRO-INCHES)

1. BRASS
2. NICKEL PL. 100 MIN. THICK OVER COPPER PL. 50 MIN. THICK
3. BERYLLIUM COPPER
4. GOLD PL. 3 MIN. THICK OVER NICKEL PL. 50 MIN. THICK OVER COPPER PL. 50 MIN. THICK
5. TEFLON

1. CRIMPED FERRULE
HEX CRIMP SIZE .278"
2. CRIMPED CONTACT PIN
SQ. CRIMP SIZE .043"

NO.	DESCRIPTION	MATERIAL	FINISH	Q'TY
10	FERRULE	NOTE 1	NOTE 2	1
9	CONTACT PIN	NOTE 1	NOTE 4	1
8	BARREL	NOTE 1	NOTE 2	1
7	RING	NOTE 1	NOTE 2	1
6	OUTER BODY	NOTE 1	NOTE 2	1
5	SPRING	STAINLESS STEEL	NATURAL	2
4	BALL	STAINLESS STEEL	NATURAL	3
3	OUT CONTACT	NOTE 3	NOTE 4	1
2	INSULATOR	NOTE 5	NATURAL	1
1	BODY	NOTE 1	NOTE 2	1

RoHS Compliant

TOLERANCES ARE

0.5-6 = ±0.2
6-30 = ±0.4
30-120 = ±0.6
120-315 = ±1
315-1000 = ±1.6
1000-2000 = ±2.4



ORDER INFORMATION

1023-PC-6-LF
SERIES | LEADFREE
RG 6
CRIMP
MALE

DESCRIPTION: 1.0/2.3 CRIMP PLUG (FOR BELDEN 1694A CABLE)

MORETHANALL
PCB CONNECTORS
Cable ASSEMBLIES

煜倫股份有限公司

www.morethanall.com

DRAWING BY CY

CHECKED BY GENIUS

UNIT / mm SCALE 1 : 1

DATE

SIZE A4

PPOJECTION