

Specifications:

1. Current Rating : 0.5A AC/DC
2. Voltage Rating : 50V AC/DC
3. Contact Resistance : 30m ohm. max.
4. Insulation Resistance : 100M ohm. min.at 100V DC
5. Withstanding Voltage : 100V AC for one minute
6. Operating Temperature Range : -20°C to +105°C

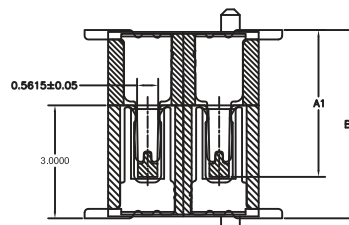
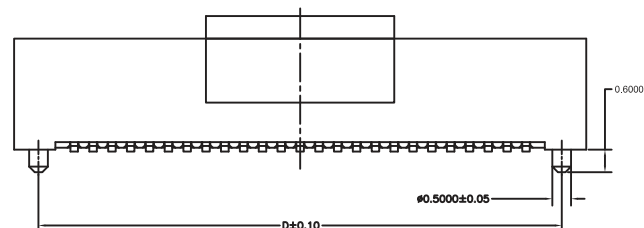
Material and Plated

1.Housing :High Temp. Plastic (LCP UL94V-0)

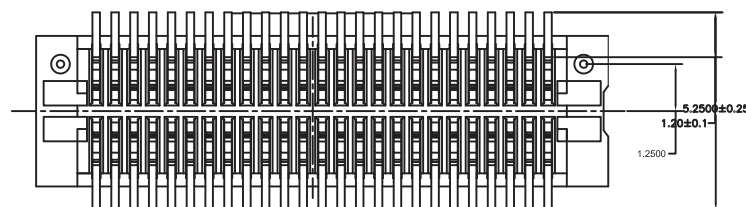
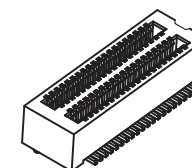
Color :White

2.Contact : Phosphor Bronze

3.Plated : Gold Plated



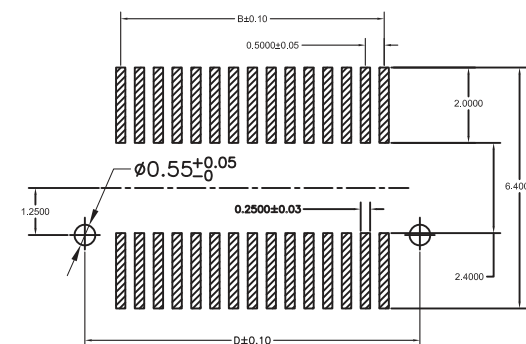
Mating Drawing (Ref)



Dim. L	Applicable Number
5.00	(10 to 48) Pin
12.0	(50 to 120) Pin

Mating Dimension

P/N(Plug)	P/N(Socket)	Plug Height Dim A1	Mating Height Dim B1
NP05K-P20PC-xxx	NP05K-S30PC-xxx	3.90	5.0
NP05K-P25PC-xxx	NP05K-S30PC-xxx	4.40	5.5



PCB LAYOUT

Dimension : $\triangle B$

Contact	DIM. A	DIM. B	DIM. C	DIM. D	Contact	DIM. A	DIM. B	DIM. C	DIM. D
10	5.20	2.00	2.96	3.90	70	20.20	17.00	17.96	18.90
20	7.70	4.50	5.46	6.40	80	22.70	19.50	20.46	21.40
30	10.20	7.00	7.96	8.90	90	25.20	22.00	22.96	23.90
40	12.70	9.50	10.46	11.40	100	27.70	24.50	25.46	26.40
50	15.20	12.00	12.96	13.90	120	32.70	29.50	30.46	31.40
60	17.70	14.50	15.46	16.40					

RoHS Compliant

TOLERANCES ARE

MORETHANALL
PCB CONNECTORS
Cable ASSEMBLIES

煜倫股份有限公司

www.morethanall.com

DRAWING BY CY

CHECKED BY GENIUS

UNIT / mm

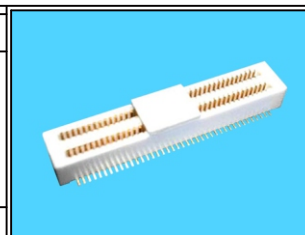
SCALE 1 : 1

DATE

SIZE A4

PPOJECTION Φ

X. \pm
.X \pm 0.20
.XX \pm 0.15
.XXX \pm
ANG \pm



ORDER INFORMATION

NP05K-S30PC-xxx-LF

SERIES

LEADFREE
010~120WAY
CAP
POST
UNMATED HIGH 3.0mm
FEMALE

DESCRIPTION: 0.5mm Board To Board Socket 3.0mm Height