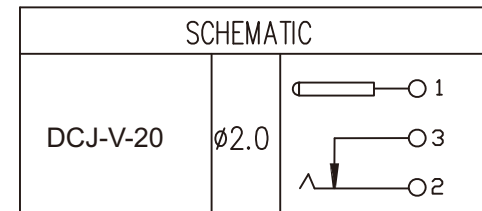


T:1.6 Dimensions of PC board holes

Tolerance : ± 0.05 (Printed-top view)

| | | | | |
|-----|-----------|-----|-------------------|----------------|
| 6 | COVER | 1 | PA9T | UL-94V0(BLACK) |
| 5 | HOUSING | 1 | PA9T | UL-94V0(BLACK) |
| 4 | PIN | 1 | H59(COPPER ALLOY) | CuSn PLATED |
| 3 | TERMINAL | 1 | C2680 t=0.40 | Ag PLATED |
| 2 | TERMINAL | 1 | C5191 t=0.30 | Ag PLATED |
| 1 | TERMINAL | 1 | C2680 t=0.40 | Ag PLATED |
| LTR | PART NAME | QTY | MATERIAL | REMARK |



UNLESS OTHERWISE SPECIFIED, TOLERANCE ON DECIMAL: ± 0.2

RoHS Compliant

TOLERANCES ARE

MORETHANALL
PCB CONNECTORS
Cable ASSEMBLIES

煜倫股份有限公司

www.morethanall.com

DRAWING BY CY

CHECKED BY GENIUS

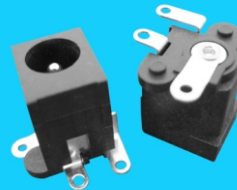
UNIT/mm SCALE 1:1

DATE

SIZE A4

X. \pm
.X \pm
.XX \pm
.XXX \pm
ANG \pm

P PROJECTION



ORDER INFORMATION

DCJ-V-20-LF

SERIES | LEADFREE
2.0 ϕ
180°SMT

DESCRIPTION: DC POWER JACK