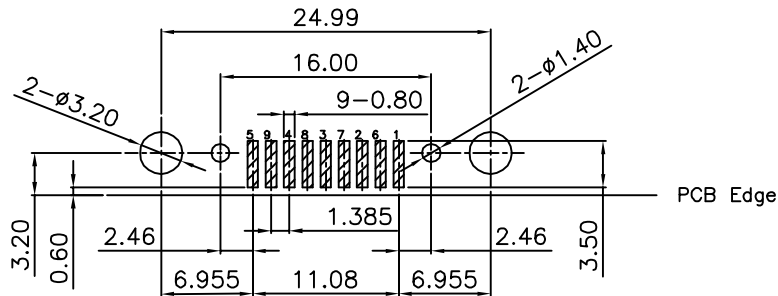
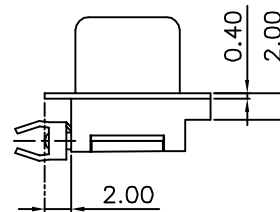
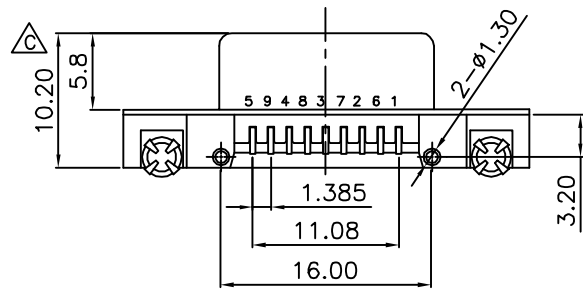


1. Material:  $\triangle E$   
 $\triangle F$  Contact: Copper Alloy  
 Insulator: LCP, UL94V-0  
 Shell: SPCC  
 Harpoon: Copper Alloy.  
 Rivet: Copper Alloy  
 Screw: Brass

2. Specification:  
 Contact Current Rating: 1 Amperes.  
 Dielectric Withstanding Voltage: AC 500V At Sea Level.  
 Insulation Resistance: 1000 Megohms Min.  
 Contact Resistance: 30 Milliohms Max.  
 Operation Temperature: -55°C to +105°C.



Recommended PCB Layout

**MORETHANALL**  
 PCB CONNECTORS  
 Cable ASSEMBLIES

煜倫股份有限公司

www.morethanall.com

RoHS Compliant

DRAWING BY CY

CHECKED BY GENIUS

UNIT/mm

SCALE 1:1

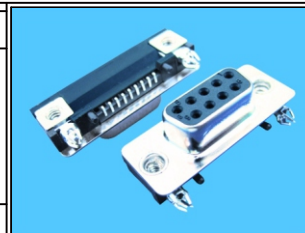
DATE

SIZE A4

PJECTION  $\oplus$   $\triangleleft$

TOLERANCES ARE

X.  $\pm$   
 X.  $\pm$  0.30  
 .XX  $\pm$  0.20  
 .XXX  $\pm$  0.05  
 ANG  $\pm$  3°



ORDER INFORMATION

DW-SNZ4-09-LF  
 SERIES | LEADFREE  
 | 09WAY  
 | CLIP TYPE 4  
 NUT  
 FEMALE

DESCRIPTION: D-SUB SLIM 90°SMD