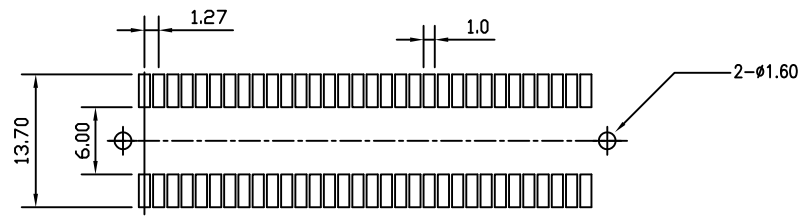


SECTION A-A



RECOMMENDED PCB LAYOUT (TOP VIEW)

MATERIAL
 INSULATOR: GLASS-REINFORCED THERMOPLASTIC PPS.
 CONTACT: COPPER ALLOY.
 PLATING: MATING AREA - SELECTED GLOD OVER NICKEL.
 SOLDER AREA - TIN OVER NICKEL.

ELECTRICAL
 VOLTAGE RATING: 250 VAC RMS.
 CURRENT RATING: 1 AMP
 DIELECTRICAL WITHSTANDING VOLTAGE: 500 VAC RMS 60 Hz FOR 1 MINUTE.
 INSULATION RESISTANCE: 1000 MEGOHMS MIN AT 500 VDC.
 CONTACT RESISTANCE: 30 MILLIOHMS MAX AT 1 AMP DC.

MECHANICAL
 RETENTION FORCE: 460 GRAMS MIN PER CONTACT.
 INSERTION FORCE: 230 GRAMS MAX PER CONTACT PER.
 WITHDRAWAL FORCE: 15 GRAMS MIN PER CONTACT PER.

ENVIRONMENTAL
 TEMPERATURE RANGE: -55°C TO +85°C.

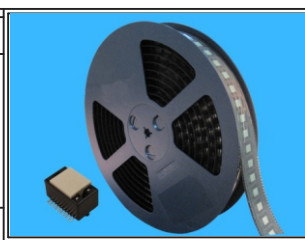
Pin NO. \ DIM.	A	B	C	D
20PIN	16.26	13.97	11.43	15.09

RoHS Compliant

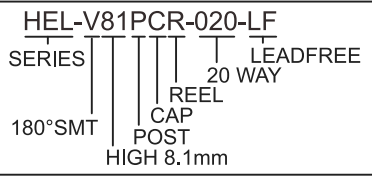
TOLERANCES ARE



DRAWING BY CY		X.±
CHECKED BY GENIUS		.X±
UNIT / mm	SCALE 1 : 1	.XX±
DATE		.XXX±
SIZE A4	PJECTION	ANG±



ORDER INFORMATION

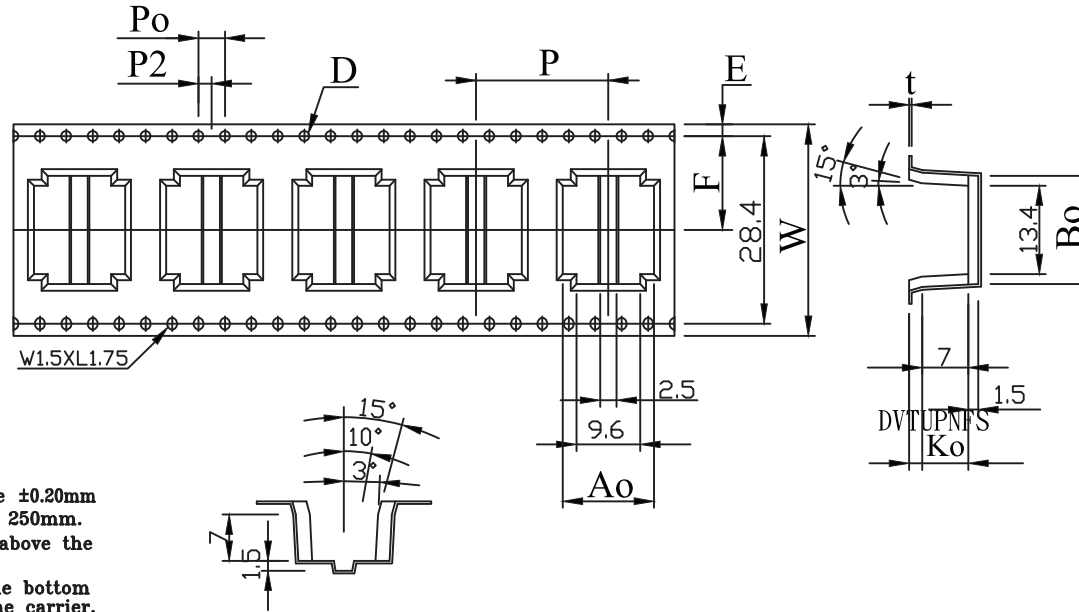


煜倫股份有限公司

www.morethanall.com

DESCRIPTION:

SALES LEADS AND PRODUCT REQUEST FORM



1. 10 sprocket hole pitch cumulative tolerance $\pm 0.20\text{mm}$
2. Carrier camber not to exceed 1mm in 250mm.
3. A and B measured on a plane 0.3mm above the bottom of the pocket.
4. K measured from a plane on the inside bottom of the pocket to the top surface of the carrier.
5. All dimensions meet EIA-481-B requirements.
6. Material:
7. Packing length per 22" reel : 21 Meters.
8. Component load per 13" reel : 300 pcs.
(before & after 0.8M)

ITEM	SPEC
W	32.0 ^{+0.30} -0.30
Ao	13.8 ^{+0.10} -0.10
Bo	16.4 ^{+0.10} -0.10
Ko	9.00 ^{+0.10} -0.10
P	20.0 ^{+0.10} -0.10
F	14.2 ^{+0.10} -0.10
E	1.75 ^{+0.10} -0.10
D	1.50 ^{+0.10} -0.00
D1	0.00 ^{+0.10} -0.10
Po	4.00 ^{+0.10} -0.10
P2	2.00 ^{+0.10} -0.10
t	0.40 ^{+0.05} -0.05

RoHS Compliant

TOLERANCES ARE

MORETHANALL
PCB CONNECTORS
Cable ASSEMBLIES

煜倫股份有限公司

www.morethanall.com

DRAWING BY CY

CHECKED BY GENIUS

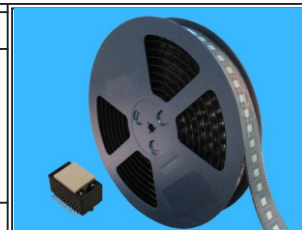
UNIT / mm SCALE 1 : 1

DATE

SIZE A4

PJECTION

X, ±
.X ±
.XX ±
.XXX ±
ANG ±



ORDER INFORMATION

HEL-V81PCR-020-LF
SERIES | | | | | LEADFREE
| | | | | 20 WAY
| | | | | REEL
| | | | | CAP
180°SMT | | | | | POST
HIGH 8.1mm

DESCRIPTION: