

RECOMMEND PCB LAYOUT
GENERAL TOLERANCE ±0.05

SPECIFICATION

1. Material:

housing: LCP, UL94V-0,color:black.
orbit: PA46, UL94V-0,color:black.
Contacts: Phosphor Bronze,
Tin 160u" at Solder Tail,
Selected Gold on Contact Area Plating.
Shell: Stainless. picking

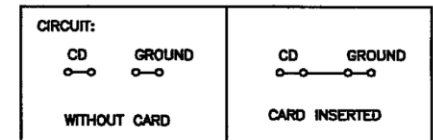
2. Electrical Characteristics:

Operating voltage: 100V AC(rms)/DC.
Current rating: 0.5A.
Operating Temperature: -25°C~+85°C.
Insulation resistance: 1000M ohms min. at 500 VDC
Dielectric withstanding voltage:500 VAC/1 minute.
Contact resistance: 100m ohms max.

3. Mechanical characteristics

3.1 Mating durability: 10000 cycles.
3.2 Insertion force: 2.0 Kgf Max.
3.3 Extraction force: 0.5 Kgf Min.
3.4 Mating cycles: 10000 cycles at the speed rate of 400-600 cycles/h; Without distortion of plastic and serious wear and tear in terminal, No signal break.

| Pin No. | MICRO SD |
|---------|-------------|
| PIN1 | DAT2 1P |
| PIN2 | CD/DAT3 2P |
| PIN3 | CMD 3P |
| PIN4 | VDD 4P |
| PIN5 | CLK 5P |
| PIN6 | VSS 6P |
| PIN7 | DAT0 7P |
| PIN8 | DAT1 8P |
| PIN9 | CARD DETECT |



RoHS Compliant

TOLERANCES ARE

MORETHANALL
PCB CONNECTORS
Cable ASSEMBLIES

DRAWING BY CY

CHECKED BY GENIUS

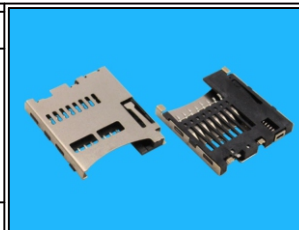
UNIT / mm SCALE 1 : 1

DATE

SIZE A4

X, ±
.X ± 0.25
.XX ± 0.15
.XXX ±
ANG ±

PPOJECTION



ORDER INFORMATION

TFC-WPCE13B-08-LF
SERIES | | | | | LEADFREE
90°SMT | | | | | 08WAY
PUSH PUSH | | | | | SWITCH OPEN
EAR 13.63mm
C/LAYOHT

DESCRIPTION:

煜倫股份有限公司

www.morethanall.com