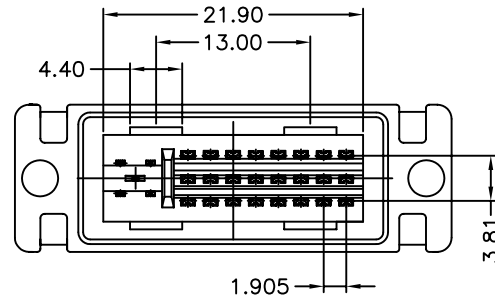
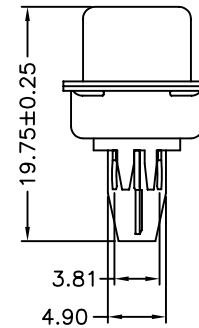
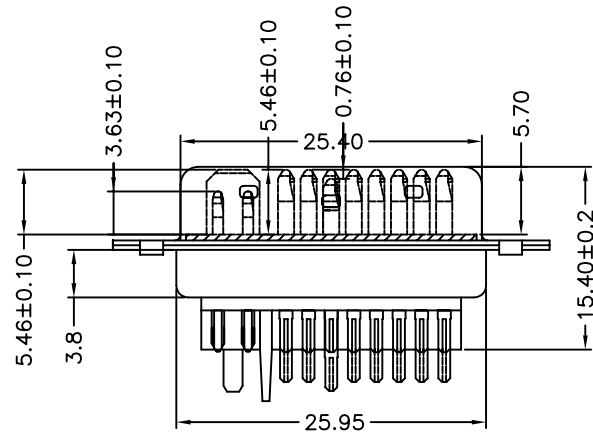
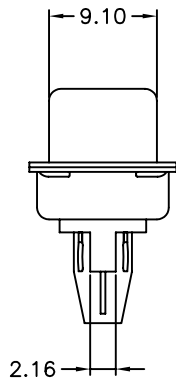


MATERIALS

- 1.HOUSING : PBT+25%
- 2.TERMINAL : BRASS GOLD AND TIN PALTED
- 3.FRONT SHIELD : SPCC NICKEL PALTED
- 4.BACK SHIELD : SPCC TIN PLATING PLATED

SPECIFICATION:

- 1.CURRENT RATING:1.5AMP. MAX
- 2.DIELECTRIC WITHSTANDING VOLTAGE
500V AC R.M.S. FOR ONE MINUTE
- 3.INSULATION RESISTANCE:1000M OHMS MIN.AT 500V DC
- 4.CONCACT RESISTANCE:20M OHMS MAX
- 5.OPERATING TEMPERATURE:0°C TO +85°C
- 6.MAX. PROCESSING TEMPERATURE:
230°C FOR 30~60 SECONDS(HI.-TEMP.PLASTIC)



PART NO.	PLATING	COLOR
DVI-PS-24+5	GOLD(3u') OR TIN PLATED	WHITE

NOTE:

THE 14PIN HEGHEST SHORT 0.76m/m OTHER PIN

RoHS Compliant

TOLERANCES ARE

MORETHANALL
PCB CONNECTORS
Cable ASSEMBLIES

DRAWING BY CY

X.±

CHECKED BY GENIUS

.X±

UNIT / mm

SCALE 1 : 1

.XXX±

DATE

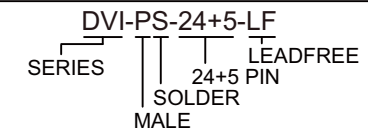
ANG±

SIZE A4

PJECTION



ORDER INFORMATION



煜倫股份有限公司

www.morethanall.com

DESCRIPTION: DVI 24+5公半金黑SH