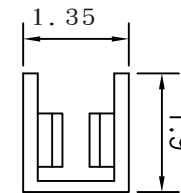
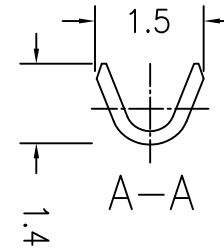
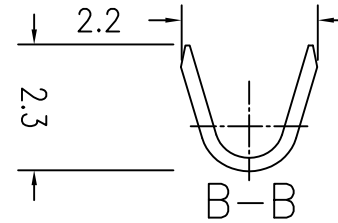
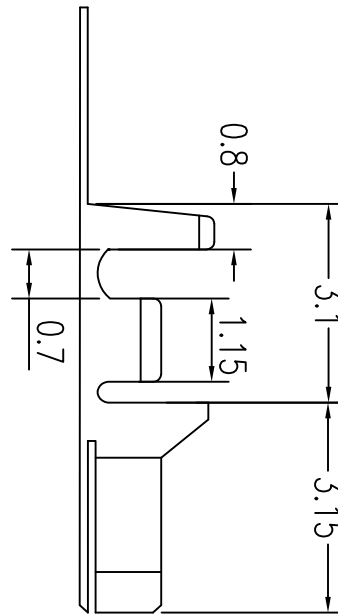
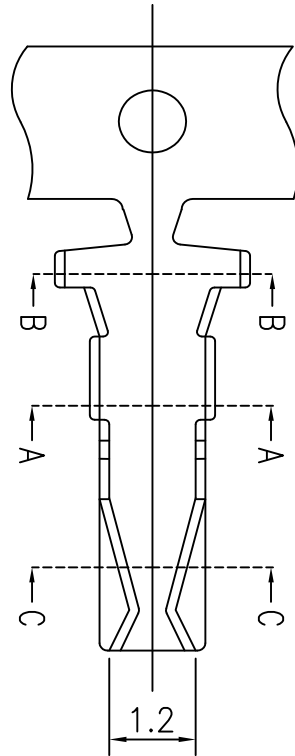


Features:

- * Accepts AWG 26~30 wire range
- Material : Phosphor Bronze
- Finish Tin-plated & Gold-flash
- * Qty /reel :10000 PCS
- * Thickness:0.2
- * Tolerance±0.2mm

Specification :

- Pitch between poles 2.0mm
- Rate Voltage 250V AC,DC
- Rated Current 1A. AC,DC
- * Applicable Wire AWG#26~#30



C-C



PART NO. YH22-T-26

DWG NO. YH22-T-26

FILE NO.

CHECKED BY CY

DRAWING BY

TOLERANCES ARE

- .X ± 0.2
- .XX ±
- .XXX ±
- AWG

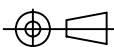
DESCRIPTION:

煜倫股份有限公司

UNIT / mm

SCALE 1:1

PROJECTION



AREA

REVISIONS

HK

DATE