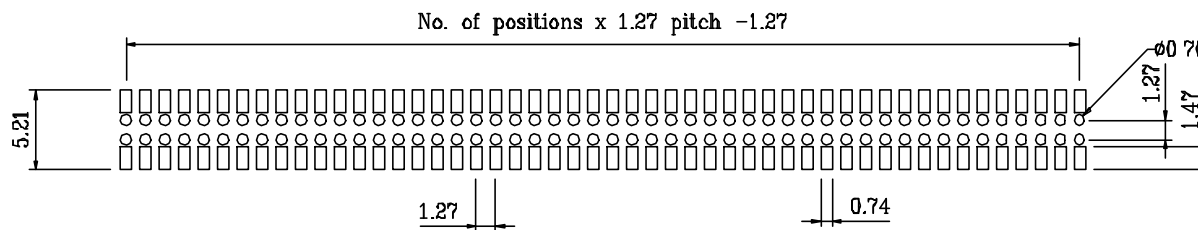


## SPECIFICATIONS

- \* Current Rating : 1 Amps
- \* Insulator resistance: 5000 Megohms min.
- \* Dielectric withstanding: AC 500 V
- \* Operating Temperature: -40°-+105°C
- \* Max Processing Temp: 230° for 30~60 seconds  
(260° for 10 seconds)
- \* Contact Material: Phosphor bronze
- \* Housing: L.C.P (UL 94 V-0)



Recommended P.C.B. Layout

**RoHS Compliant**

TOLERANCES ARE

**MORETHANALL**  
PCB CONNECTORS  
Cable ASSEMBLIES

煜倫股份有限公司

www.morethanall.com

DRAWING BY CY

CHECKED BY GENIUS

UNIT / mm

SCALE 1 : 1

DATE

SIZE A4

PJECTION

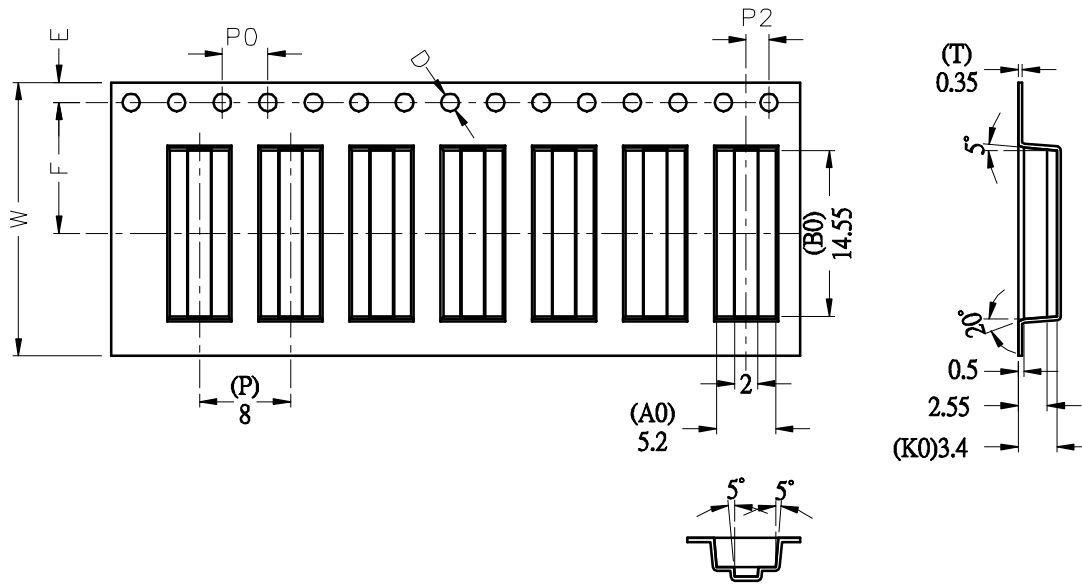
X, ±  
.X ±  
.XX ±  
.XXX ±  
ANG ±



**ORDER INFORMATION**

YA-Z22XCR-2Xxx-LF  
 SERIES REEL 2X02:04WAY LEADFREE  
 CAP 2X40:80WAY  
 BOTTOM ENTRY SMT NON POST  
 HIGH 2.2mm

DESCRIPTION: 1.27x1.27mm SOCKET LOW PROFILE 2.2mm SMD TYPE



1. 1.10 sprocket hole pitch cumulative tolerance  $\pm 0.20$ mm.
2. Carrier camber not to exceed 1mm in 100mm.
3.  $A_0$  and  $B_0$  measured on a plane 0.3mm above the bottom of the pocket.
4.  $K_0$  measured from a plane on the inside bottom of the pocket to the top surface of the carrier.
5. All dimensions meet EIA-481-C requirements.
6. Material: Black Anti-static Polystyrene.
7. Thickness:  $0.35 \pm 0.05$  mm.
8. Packing length per 22" reel : 58.5 Meters.
9. Component loaded per 13" reel : 2300 pcs. (Core 4")

ITEM	W	$A_0$	$B_0$	$K_0$	$K_1$	P	F	E	D	$D_1$	$P_0$	$P_2$
DIM	24.0 <sup>+0.30</sup> <sub>-0.30</sub>	5.20 <sup>+0.20</sup> <sub>-0.10</sub>	14.55 <sup>+0.20</sup> <sub>-0.10</sub>	3.40 <sup>+0.20</sup> <sub>-0.10</sub>	0.00 <sup>+0.20</sup> <sub>-0.10</sub>	8.00 <sup>+0.10</sup> <sub>-0.10</sub>	11.50 <sup>+0.15</sup> <sub>-0.15</sub>	1.75 <sup>+0.10</sup> <sub>-0.10</sub>	1.50 <sup>+0.10</sup> <sub>-0.00</sub>	0.00 <sup>+0.25</sup> <sub>-0.00</sub>	4.00 <sup>+0.10</sup> <sub>-0.10</sub>	2.00 <sup>+0.10</sup> <sub>-0.10</sub>

RoHS Compliant

TOLERANCES ARE

**MORETHANALL**  
PCB CONNECTORS  
Cable ASSEMBLIES

DRAWING BY CY

CHECKED BY GENIUS

UNIT / mm

SCALE 1 : 1

DATE

SIZE A4

P PROJECTION

X,  $\pm$   
.X  $\pm$   
.XX  $\pm$   
.XXX  $\pm$   
ANG  $\pm$



ORDER INFORMATION

YA-Z22XCR-2Xxx-LF  
SERIES REEL 2X02:04WAY LEADFREE  
CAP 2X40:80WAY  
BOTTOM ENTRY SMT NON POST HIGH 2.2mm

DESCRIPTION: 1.27mm 2x11pH 2.2mm

煜倫股份有限公司

www.morethanall.com