

Table 1:

16	XSR-WR-16	11.4	9.76	9	10.75
15	XSR-WR-15	10.8	9.16	8.4	10.15
14	XSR-WR-14	10.2	8.56	7.8	9.55
13	XSR-WR-13	9.6	7.96	7.2	8.95
12	XSR-WR-12	9	7.36	6.6	8.35
11	XSR-WR-11	8.4	6.76	6	7.75
10	XSR-WR-10	7.8	6.16	5.4	7.15
9	XSR-WR-09	7.2	5.56	4.8	6.55
8	XSR-WR-08	6.6	4.96	4.2	5.95
7	XSR-WR-07	6	4.36	3.6	5.35
6	XSR-WR-06	5.4	3.76	3	4.75
5	XSR-WR-05	4.8	3.16	2.4	4.15
4	XSR-WR-04	4.2	2.56	1.8	3.55
3	XSR-WR-03	3.6	1.96	1.2	2.95
2	XSR-WR02	3	1.36	0.6	2.35
NO.	Part No.	A	B	C	D

3	Hold Down	2	COPPER ALLOY	Sn Over Ni	
2	INSULATOR	1	LCP	Black
1	CONTACT	Table 1	COPPER ALLOY	Table 2	
NO.	Description	Quantity	Material	Finish	Remark

XSR-WR-xx-LF
LEADFREE
02~16WAY
RoHS Compliant

煜倫股份有限公司

PART NO. XSR-WR-xx

DWG NO. XSR-WR-xx

FILE NO.

UNIT / mm

SCALE 1:1

CHECKED BY CY

DRAWING BY

PROJECTION

TOLERANCES ARE
.X ± 0.2
.XX ±
.XXX ±
ANG

DESCRIP TION:

AREA

REVISIONS

HK

DATE

SPECIFICATIONS

1. ELECTRICAL

Voltage rating : 30VDC

Current rating : 0.2A (AWG#36)

Contact resistance : 30mΩ max.(initial)

Insulation resistance : 100 MΩ min.

Withstanding Voltage:200V AC/minute

2.MECHANICAL

Durability : Mate & Unmate with applicability
for 20 times, Contact resistance: 30 mΩ max.

(initial), 50mΩ max. (final)

Terminal Retention Force: 0.15 kgf min.

MATERIALS

1. MATERIAL

Contacts : Phosphor Bronze.

Insulator Housing : High Temp Thermoplastic

2. PLATING

Contact:

Nickel In All Area

Sn over Nickel(RoHS Compliant)

Au over Nickel(RoHS Compliant)



PART NO. XSR-WR-xx

DWG NO. XSR-WR-xx

FILE NO.

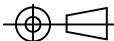
UNIT / mm

SCALE 1:1

CHECKED BY CY

DRAWING BY

PROJECTION



TOLERANCES ARE

.X ± 0.2

.XX ±

.XXX ±

ANG

DESCRIP TION:

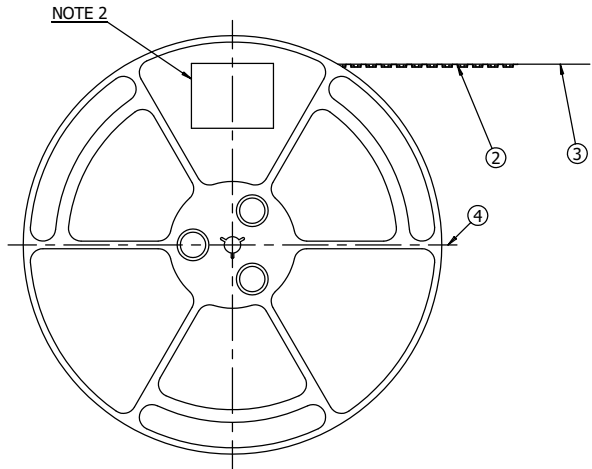
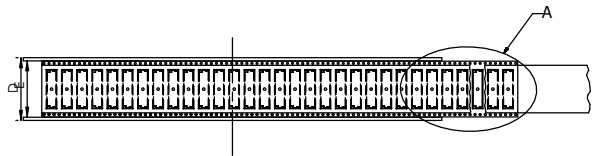
AREA

REVISIONS

HK

DATE

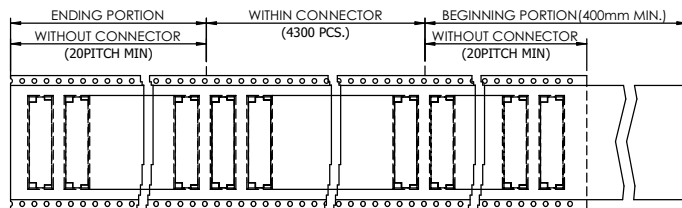
煜倫股份有限公司



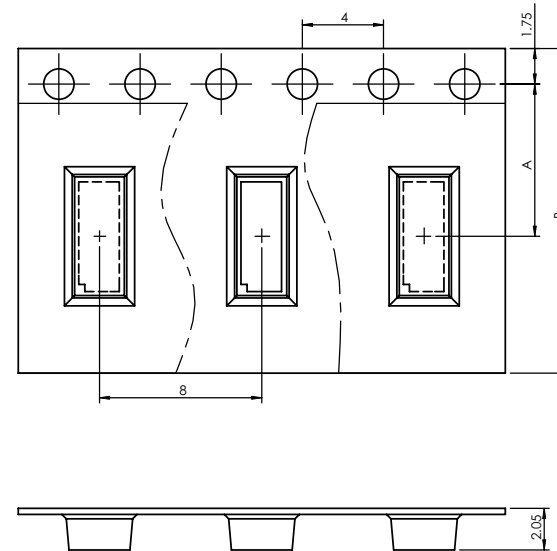
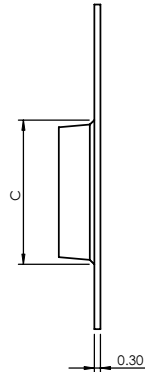
REEL
(SCALE 1:4)

NOTE :

1. SUFFIX "-E4300" OF THE PART NUMBER INDICATES THAT 4300 PCS. OF XSR-WR-xx CONNECTORS ARE ACCOMMODATED IN ONE REEL.
2. THE LABEL IS TO BE ATTACHED ON THE MAGAZINE AS SHOWN.
3. REFER. TO THE DRAWING (TITLE:XSR-WR-xx) FOR THE DIMENSIONS OF THE CONNECTOR.
4. PLEASE LOOK AT TABLE1 WITH THE DIMENSION OF A,B,C...ETC.



DIRECTION



16	11.5	24	20.1	24.4	30.4
15	11.5	24	20.1	24.4	30.4
14	11.5	24	20.1	24.4	30.4
13	11.5	24	20.1	24.4	30.4
12	7.5	16	12.1	16.4	22.4
11	7.5	16	12.1	16.4	22.4
10	7.5	16	12.1	16.4	22.4
9	7.5	16	12.1	16.4	22.4
8	7.5	16	12.1	16.4	22.4
7	7.5	16	12.1	16.4	22.4
6	7.5	16	12.1	16.4	22.4
5	5.5	12	8.2	12.4	18.4
4	5.5	12	8.2	12.4	18.4
3	5.5	12	8.2	12.4	18.4
2	5.5	12	8.2	12.4	18.4
NO.	A	B	C	D	E

4	REEL	1	—	—	
3	COVER-TAPE	—	PET	—	
2	CARRIER-TAPE	—	PS	—	
1	CONNECTOR	4300	—	—	76426U5100Z
NO.	DESCRIPTION	QUANTITY	MATERIAL	FINISH	REMARKS

MORETHANALL
CONNECTORS
ASSEMBLIES

PART NO. XSR-WR-xx

DWG NO. XSR-WR-xx

FILE NO.

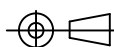
UNIT / mm

SCALE 1:1

CHECKED BY CY

DRAWING BY

PROJECTION



TOLERANCES ARE

.X ± 0.2

.XX ±

.XXX ±

ANG

DESCRIP TION:

AREA

REVISIONS

HK

DATE

煜倫股份有限公司