

• MATERIALS: [RoHS Compliant]

Housing : PBT+ Glass Fiber UL94V-0, Black

Contacts: Phosphor bronze gold selective plated

Shell: Steel, Nickel Plated over copper

• ELECTRICAL CHARACTERISTICS:

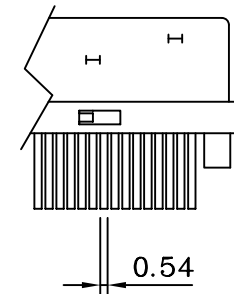
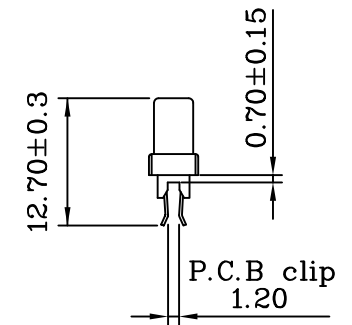
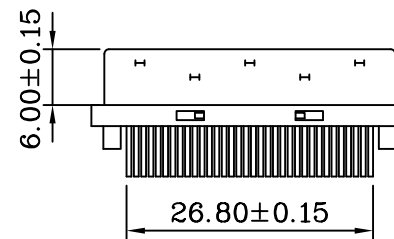
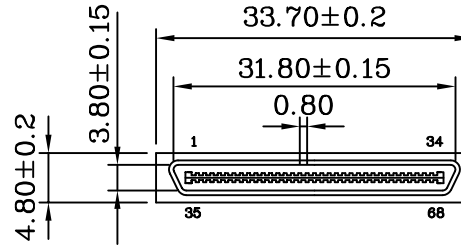
Contact current rating: 1 Amp

Dielectric withstanding voltage: 250V AC

Insulation resistance: 500MΩ/Min

Contact resistance: 35mΩ/Max

Operation temperature: -55°C ~ +105°C



Detail A Scale 1.5:1

RoHS Compliant

TOLERANCES ARE

**MORETHANALL**  
PCB CONNECTORS  
Cable ASSEMBLIES

煜倫股份有限公司

www.morethanall.com

DRAWING BY CY

CHECKED BY GENIUS

UNIT / mm

SCALE 1:1

DATE

SIZE A4

PJECTION

X.±  
.X±  
.XX±  
.XXX±  
ANG±

照片框

ORDER INFORMATION

VHC-PE-068-LF  
SERIES | LEADFREE  
| 68 WAY  
EDGE  
MALE

DESCRIPTION: (VHDCI) 68P For P.C.B Clip S.M.T Molding Type