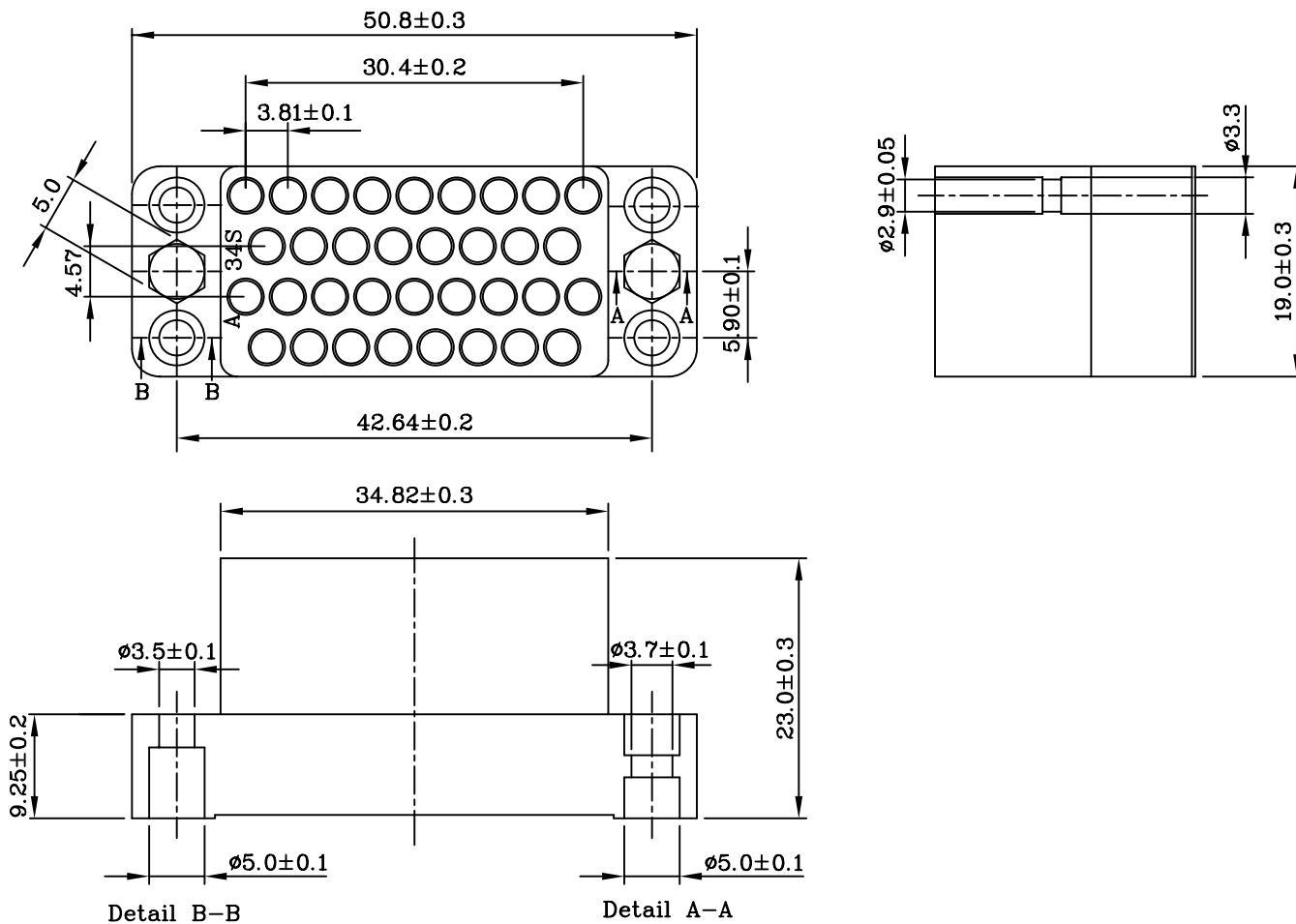


MATERIALS:

- Housing And Cover: Plactic thermoplastic
P.B.T UL94V-0 black

ELECTRICAL:

- Current Rating: 7 Amp
- Insulation Resistance: 1000MΩ/Min
- Withstanding Voltage: 1200V AC/Min
- Contact Resistance: 10mΩ Max
- Temperature Range: -55°C ~ +105°C



-55 C to +105 C

RoHS Compliant

TOLERANCES ARE

MORETHANALL
PCB CONNECTORS
Cable ASSEMBLIES

DRAWING BY CY
CHECKED BY GENIUS
UNIT / mm SCALE 1 : 1
DATE

X. ±
.X ±
.XX ±
.XXX ±
ANG ±

照片框

ORDER INFORMATION

V35-SH-34-LF
SERIES | LEADFREE
| 34WAY
HOUSING
FEMALE

煜倫股份有限公司

www.morethanall.com

SIZE A4 PPROJECTION

DESCRIPTION: V.35 CONNECTOR MALE WITH METAL SHELL