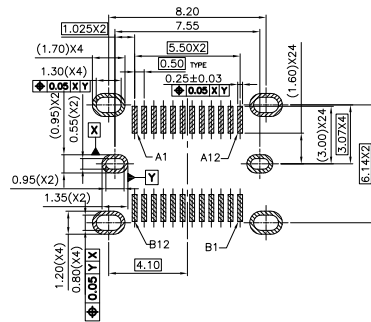
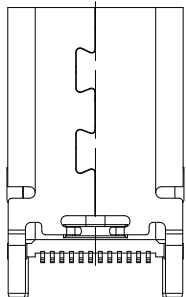
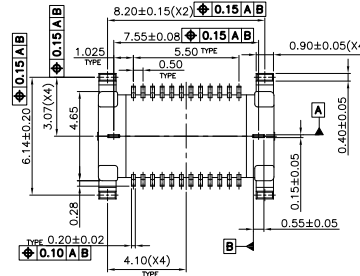
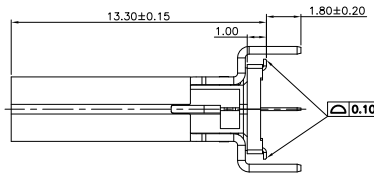
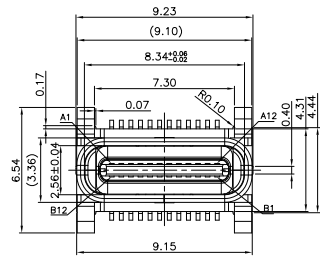
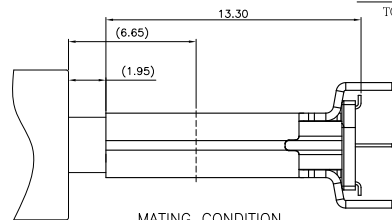


INCREASE THE DIAGRAMS OF CAP



RECOMMEND P.C.B LAYOUT (COMPONENT SIDE)  
TOLERANCE FOR PCB LAYOUT IS ±0.05  
PAD AREA



MATING CONDITION

Pin	Signal Name	Mating Sequence	Pin	Signal Name	Mating Sequence
A1	GND	First	B12	GND	First
A2	SSTXp1	Second	B11	SSRXp1	Second
A3	SSTXn1	Second	B10	SSRXn1	Second
A4	V <sub>BUS</sub>	First	B9	V <sub>BUS</sub>	First
A5	CC1	Second	B8	SBU2	Second
A6	Dp1	Second	B7	Dn2	Second
A7	Dn1	Second	B6	Dp2	Second
A8	SBU1	Second	B5	CC2	Second
A9	V <sub>BUS</sub>	First	B4	V <sub>BUS</sub>	First
A10	SSRXn2	Second	B3	SSTXn2	Second
A11	SSRXp2	Second	B2	SSTXp2	Second
A12	GND	First	B1	GND	First
SHELL	GND		SHELL	GND	

NOTE:

1. MATERIAL:

- 1.1 INSULATOR: LCP UL94V-0; Black Color
- 1.2 CONTACT: C18400 0.15t
- 1.3 SHELL: STAINLESS STEEL 0.4t

2. ELECTRICAL CHARACTERISTICS:

- 2.1 CONTACT RESISTANCE: 40mΩ max. FOR INITIAL. 10mΩ CHANGE AFTER TEST. MEASURE AT 20mV, 100mA.
- 2.2 CONTACT CURRENT RATING: 5A FOR COLLECTIVELY POWER SUPPLY PIN (PINA1,A4,A9,A12,B1,B4,B9,B12); 1.25A FOR V<sub>CONN</sub> PIN 0.25A FOR OTHER SIGNAL PIN.
- 2.3 DIELECTRIC WITHSTANDING VOLTAGE: 100V AC R.M.S.
- 2.4 INSULATION RESISTANCE 100MΩ min.
- 2.5 OPERATING TEMPERATURE: -40°C ~ 85°C

3. MECHANICAL CHARACTERISTICS:

- 3.1 MATING FORCE: 5~20N
- 3.2 UNMATED FORCE: 6~20N AFTER TEST
- 3.3 DURABILITY: 10,000 CYCLES

4. PLATING

- 4.1 TERMINAL CONTACT: GOLD PLATING ON CONTACT AREA, ALL OVER NICKEL  
Tin ALL OVER NICKEL ON SOLDER AREA
- 4.2 SHELL: NICKEL ALL OVER

RoHS Compliant

TOLERANCES ARE

**MORETHANALL**  
PCB CONNECTORS  
Cable ASSEMBLIES

煜倫股份有限公司

www.morethanall.com

DRAWING BY CY

CHECKED BY GENIUS

UNIT / mm

SCALE 1 : 1

DATE

SIZE A4

PPOJECTION

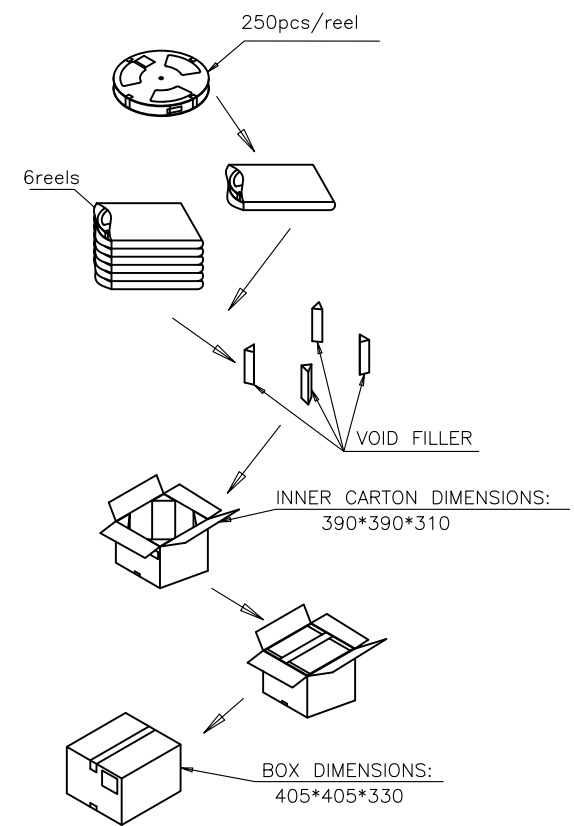
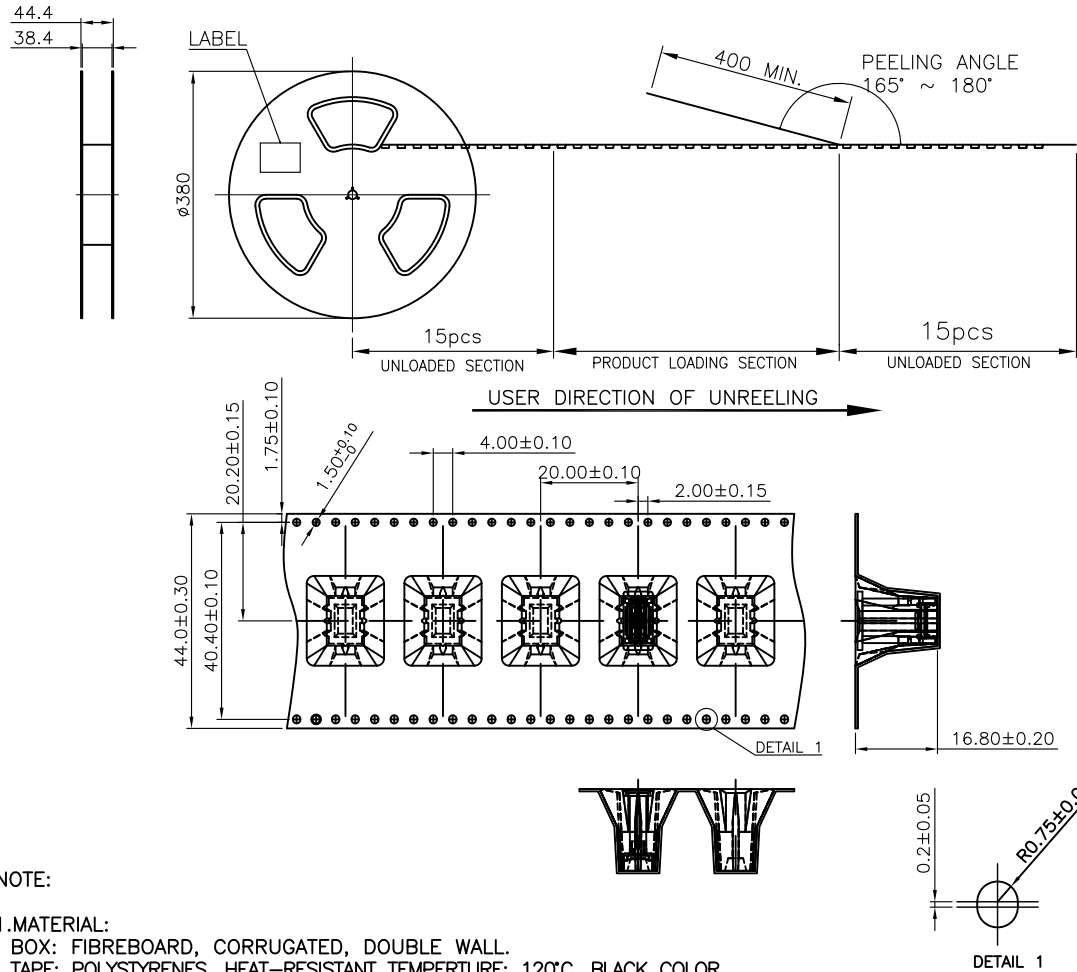
X, ±  
.X ± 0.35  
.XX ± 0.20  
.XXX ±  
ANG ± 3°

照片框

ORDER INFORMATION

USB-SV13MMCR-24C-LF  
SERIES | | | | | LEADFREE  
FEMALE | | | | | 24 PIN C TYPE  
REEL  
CAP  
METAL FOOT  
HIGH 13.3mm  
180°SMT

DESCRIPTION: USB C Type Female SMT Vertical 13.3H



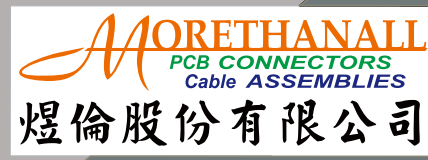
NOTE:

- 1. MATERIAL:  
 BOX: FIBREBOARD, CORRUGATED, DOUBLE WALL.  
 TAPE: POLYSTYRENES, HEAT-RESISTANT TEMPERATURE: 120°C, BLACK COLOR.  
 REEL: POLYSTYRENES, HEAT-RESISTANT TEMPERATURE: 70°C, BLUE COLOR.  
 BAG: POLYETHYLENE, HEAT-RESISTANT TEMPERATURE: 100°C.

- 2. PEELING STRENGTH: 0.1 ~ 1.3 N (10 ~ 130 GRAMS)
- 3. PEELING SPEED: 300 mm/min.
- 4. EACH BAG SHALL BE INCLUDED DESICCANT.

RoHS Compliant

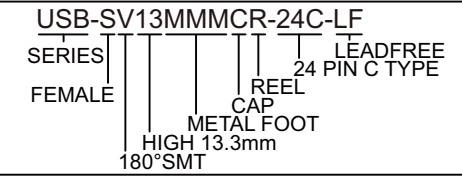
TOLERANCES ARE



DRAWING BY CY		X. ± .X ± 0.35 .XX ± 0.20 .XXX ± ANG ± 3°
CHECKED BY GENIUS		
UNIT / mm	SCALE 1 : 1	
DATE		
SIZE A4	PJECTION	



ORDER INFORMATION



DESCRIPTION: USB C Type Female SMT Vertical 13.3H

www.morethanall.com