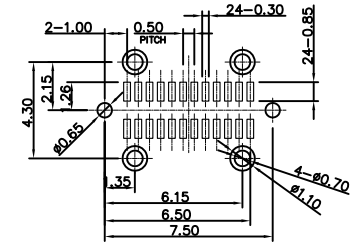
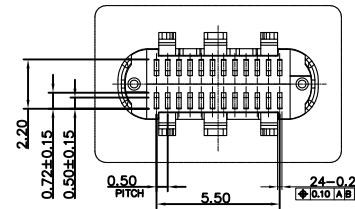
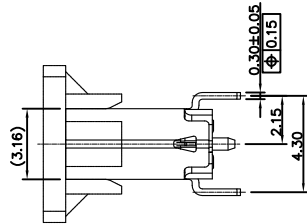
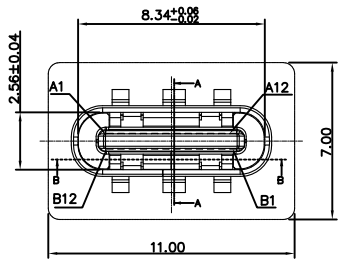
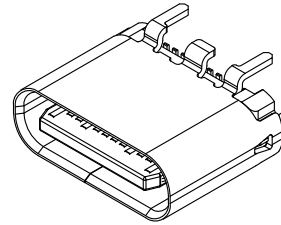
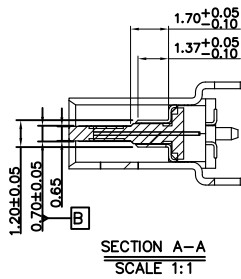
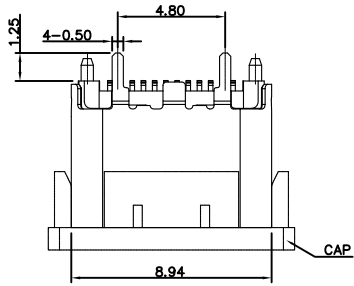


ITEM 項目	PARTS NAME 零件名稱	Q'TY 數量	MATERIAL 材質	FINISH/REMARK 處理/備註
1	HOUSING	1	SYNTHETIC RESIN	Black
2	CONTACT	24	COPPER ALLOY	Gold flash on contact area 100u" Min Matte-Tin on solder tails, base Ni: 50u"
3	SHELL	1	STAINLESS	Ni: 50u"
4	Shield	1	STAINLESS	-
5	Ground plate	1	STAINLESS	-
6	CAP	1	SYNTHETIC RESIN	Black



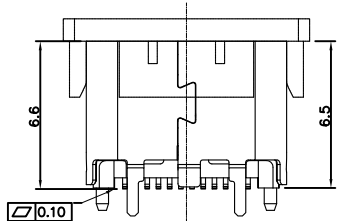
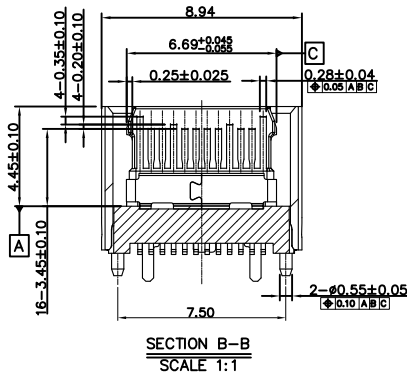
RECOMMENDED P.C.B. LAYOUT (T:1.00mm)
TOLERANCE UNSPECIFIED ±0.05mm

SPECIFICATION

- MATERIAL: See drawing
- STANDARD DATA
 - Rating current: 5.0A for VBUS (i.e., pins A4, A9, B4, B9); 1.25A for Vconn and GND (i.e., pins B5, A1, A12, B1, B12); 0.25A for all the other contacts.
- ELECTRICAL
 - Insulator resistance: 100M ohms Min.
 - Withstanding voltage: 100 VAC / minute
 - Contact resistance: 40mohms Max.
- MECHANICAL
 - Mating force: 5~20N
 - Unmating force: Initial 8~20N
After test 6~20N
 - Durability: 10000 cycles Min.

**USB TYPE-C FULL-FEATURED RECEPTACLE
INTERFACE PIN ASSIGNMENTS**

PIN	Signal Name	Description	PIN	Signal Name	Description
A1	GND	Ground return	B12	GND	Ground return
A2	SSTxp1	Positive half of first SuperSpeed TX differential pair	B11	SSRXp1	Positive half of first SuperSpeed RX differential pair
A3	SSTxn1	Negative half of first SuperSpeed TX differential pair	B10	SSRXn1	Negative half of first SuperSpeed RX differential pair
A4	Vbus	Bus Power	B9	Vbus	Bus Power
A5	CC1	Configuration Channel	B8	SBU2	Sideband Use (SBU)
A6	Dp1	Positive half of the USB 2.0 differential pair-Position 1	B7	Dn2	Negative half of the USB 2.0 differential pair-Position 2
A7	Dn1	Negative half of the USB 2.0 differential pair-Position 1	B6	Dp2	Positive half of the USB 2.0 differential pair-Position 2
A8	SBU1	Sideband Use (SBU)	B5	CC2	Configuration Channel
A9	Vbus	Bus Power	B4	Vbus	Bus Power
A10	SSRXn2	Negative half of second SuperSpeed RX differential pair	B3	SSTx2	Negative half of second SuperSpeed TX differential pair
A11	SSRXp2	Positive half of second SuperSpeed RX differential pair	B2	SSTx1	Positive half of second SuperSpeed TX differential pair
A12	GND	Ground return	B1	GND	Ground return



RoHS Compliant

TOLERANCES ARE

DRAWING BY	CY	X. ± 0.50
CHECKED BY	GENIUS	.X ± 0.30
UNIT / mm	SCALE 1:1	.XXX ± 0.20
DATE		ANG ± 5°

SIZE A4 PROJECTION

照片框

ORDER INFORMATION

USB-SV0612MPMC-24C-LF
SERIES | | | | | LEADFREE
FEMALE 180°SMT HIGH 6.5mm | | | | | CAP METAL FOOT POST METAL FOOT 1.25mm
24 PIN C TYPE

DESCRIPTION: USB 3.1 TYPE C 直立式母座

MORETHANALL
PCB CONNECTORS
Cable ASSEMBLIES
煜倫股份有限公司
www.morethanall.com