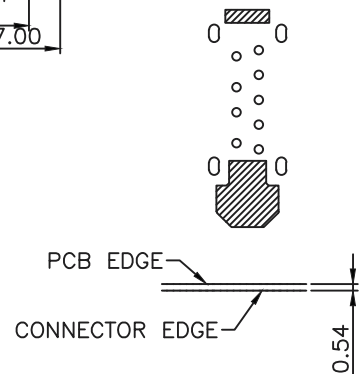
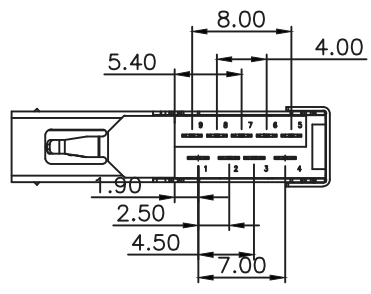
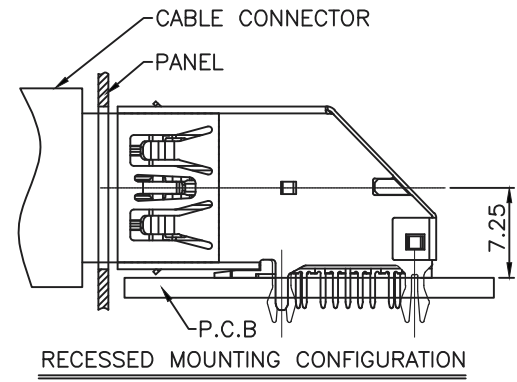


RECOMMENDED PCB LAYOUT
(COMPONENT SIDE)
THK=1.60 ALL TOL IS ±0.05



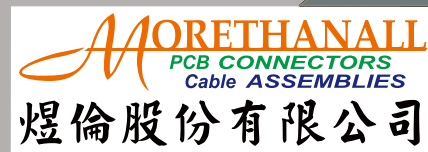
- NOTE:
- MATERIAL:
 - INSULATOR:LCP, UL 94 V-0;COLOR BLUE
 - 4PIN CONTACT:C5191(T=0.20mm)
 - 5PIN CONTACT:C2680(T=0.20mm)
 - SHELL:SUS201(T=0.30mm)
 - ELECTRICAL CHARACTERISTICS:
 - CURRENT RATING: 1.8A(PIN1, 4); OTHER CONTACTS 0.25A
 - VOLTAGE RATING: 30V DC/AC MAX.
 - CONTACT RESISTANCE: 30mΩ MAX. PIN1&PIN4 50mΩ MAX FOR OTHER CONTACTS.
 - DIELECTRIC WITHSTANDING VOLTAGE: 100V AC FOR 1 MINUTE.
 - INSULATION RESISTANCE: 100MΩ MIN.
 - MECHANICAL CHARACTERISTICS:
 - MATING FORCE: 35N(3.57 kgf) MAX.
 - MATING FORCE: 10N(1.02 kgf) MIN. (INITIAL); 8N (0.816 kgf) Min. (FINAL).
 - URABILITY: 5000 CYCLES.
 - PLATING SPECIFICATION:
 - CONTACTS: (SEE TABLE) GOLD PLATED ON CONTACT AREA, 100u" MIN. MATTE-TIN ON SOLDER TAIL, WITH ENTIRE ONTACT UNDERPLATED 50u" MIN. NICKEL.
 - SHELL: 50u" MIN. NICKEL PLATED.
 - Salt Spray 24H



Contact Number	Signal Name
PIN1	VBUS
PIN2	D-
PIN3	D+
PIN4	GND
PIN5	SMA_SSP0+
PIN6	SMA_SSP0-
PIN7	GND_DRAIN
PIN8	SMA_SSTX-
PIN9	SMA_SSTX+
Shell	Shield

RoHS Compliant

TOLERANCES ARE



DRAWING BY CY
CHECKED BY GENIUS
UNIT / mm SCALE 1 : 1
DATE

X, ±
.X ± 0.35
.XX ± 0.25
.XXX ±
ANG ±



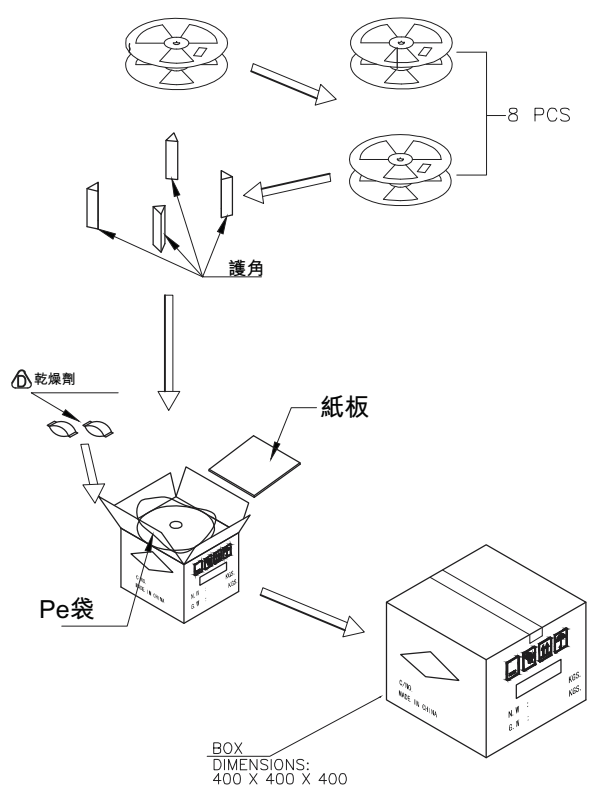
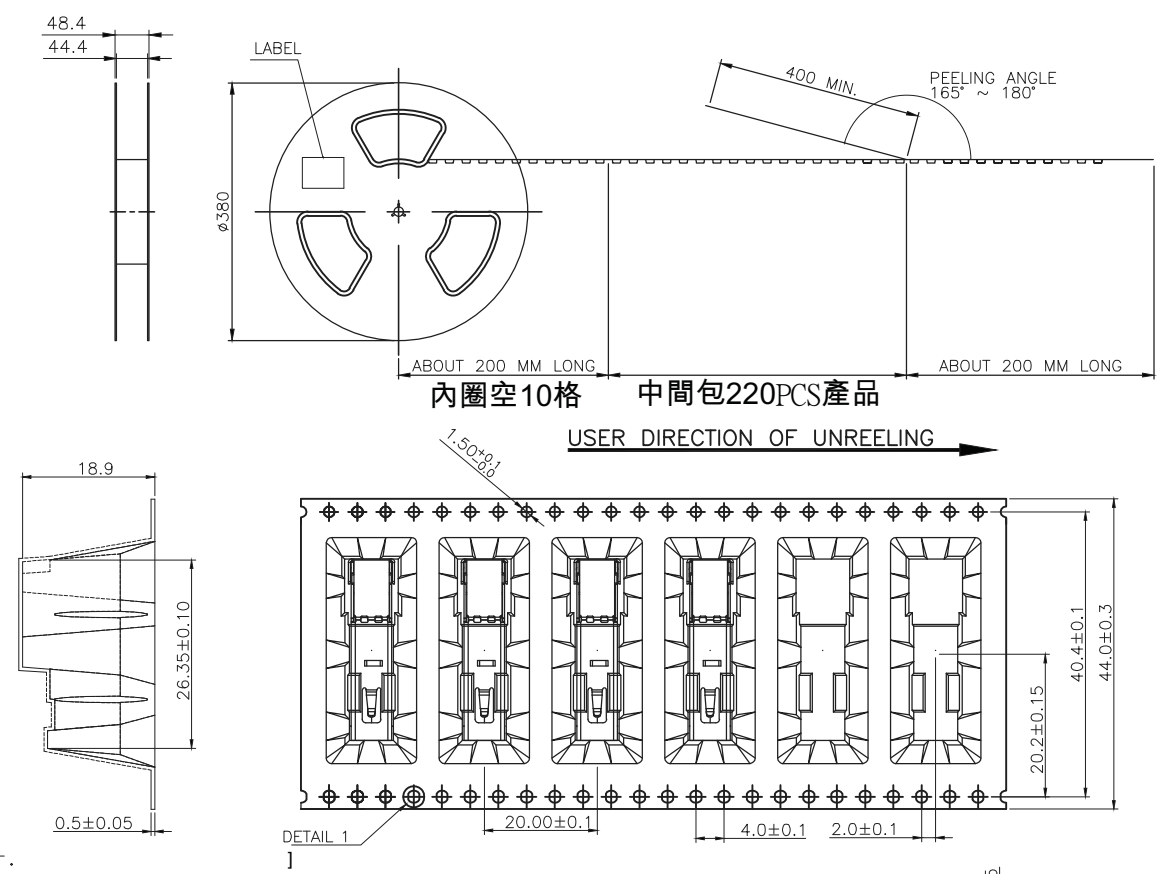
ORDER INFORMATION

USB-SUFBLR-9A-LF
SERIES | | | | LEADFREE
9 PIN A TYPE
REEL
BLUE
NON FLANGE
UPRIGHT
FEMALE

DESCRIPTION: USB 3.0 TYPE A 9P H=13.85mm L=25.70mm REC.STD DIP TYPE 側插無捲邊流插腳 L3.61mm 無邊

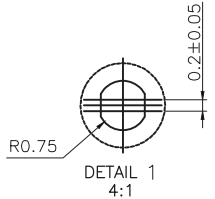
www.morethanall.com

SIZE A4 PPROJECTION



NOTE:

1. PEELING SPEED: 300mm/MINUTE
2. PEELING RESISTANCE: 30g~100g
3. PEELING ANGLE: 165°~180°
4. TAPE: POLYETHYLENE Transparent



220	8	1760 PCS	-- KG	-- KG
PCS/REEL	REELS/CARTON	QUANTITY	GROSS WEIGHT	NET WEIGHT

RoHS Compliant

TOLERANCES ARE

MORETHANALL
PCB CONNECTORS
Cable ASSEMBLIES
煜倫股份有限公司
www.morethanall.com

DRAWING BY CY
CHECKED BY GENIUS
UNIT / mm SCALE 1 : 1
DATE
SIZE A4 PPROJECTION

X, ±
.X ± 0.35
.XX ± 0.25
.XXX ±
ANG ±



ORDER INFORMATION

USB-SUFBLR-9A-LF
SERIES | | | | | LEADFREE
9 PIN A TYPE
REEL
BLUE
FEMALE | NON FLANGE
UPRIGHT

DESCRIPTION: USB 3.0 TYPE A 9P H=13.85mm L=25.70mm REC,STD DIP TYPE 側插無捲邊漁插腳 L3.61mm 無邊