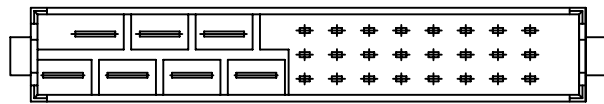
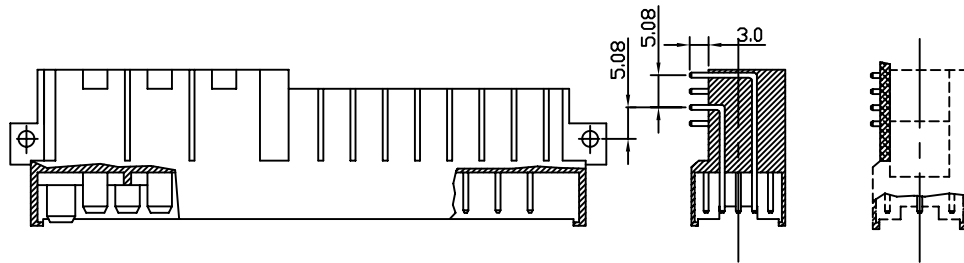
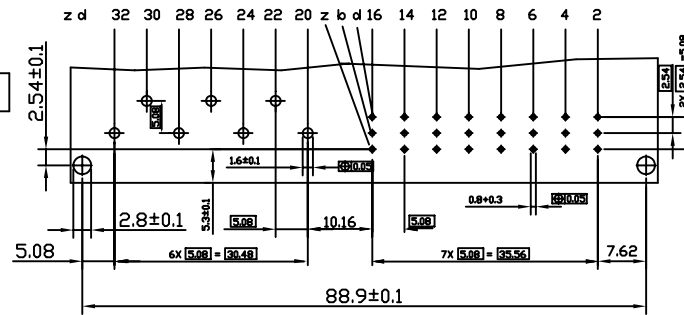


Dimensions



Recommended P.C.B. layout



Technical data

Housing	PBT & 30%Class Fiber(UL94-0)
Contact	Male : Brass
Operating temperature	-55°C~+105°C
Contact resistance	8m(ohm)max.at DC 100mA
Insulator resistance	1000M(ohm)min.at DC 500V
Current rating	15 AMP
Withstanding voltage	AC 3100V for 1 minute
Insertion force	90N max
Withdrawal force	0.2N/pin min
Contact Rating	Ag Plating

Ordering Information

NO. OF CONTACTS	24+7	24+7	16+7	16+7
POSITION	z+b+d	z+b+d z32 pre-mating	z+d	z+d z32 pre-mating
TERMINATION 3.0mm				
PART NUMBER	UMH-PR-31	UMH-PRPM-31	UMH-PR-23	UMH-PRPM-23



煜倫有限公司

PART NO.	UMH-PRPM-xx	CHECKED BY	CY	TOLERANCES ARE .X ± 0.2 .XX ± .XXX ± AWG	DESCRIPTION: DIN 41612 EUROCARD CONNECTORS			
DWG NO.	UMH-PRPM-xx				DRAWING BY	AREA	REVISIONS	HK
FILE NO.		PROJECTION						
UNIT / mm	SCALE 1:1							