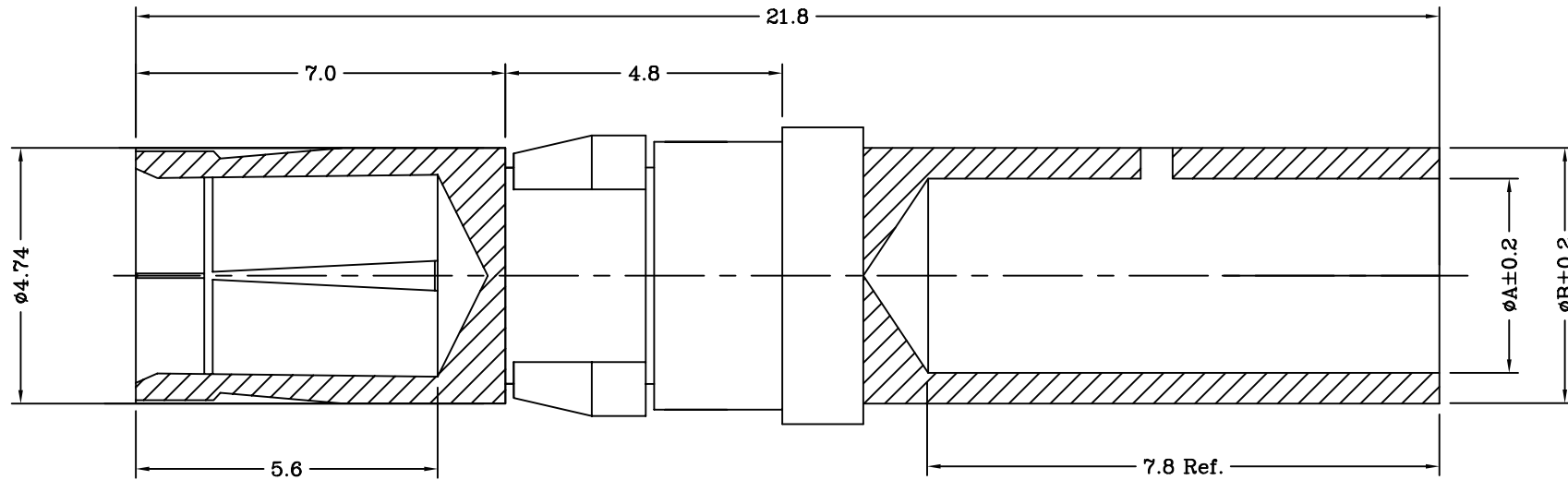


Material:

Contact: Brass With Gold Plated.

Lock Link: Brass With Nickel Plated.

***RoHS Compliant**



Current Rating (Amps)	Wire Size	Dimension	
		ϕA	ϕB
40	AWG #8	4.6	5.5
30	AWG #10	3.6	4.6
20	AWG #12	2.7	3.6
10	AWG #16	1.7	2.5

RoHS Compliant

TOLERANCES ARE

MORETHANALL
PCB CONNECTORS
Cable ASSEMBLIES

煜倫股份有限公司

www.morethanall.com

DRAWING BY CY

CHECKED BY GENIUS

UNIT / mm SCALE 1:1

DATE

SIZE A4

X. \pm

.X \pm

.XX \pm

.XXX \pm

ANG \pm

PPOJECTION

照片框

ORDER INFORMATION

UM-FC-xx-LF
SERIES | LEADFREE
FEMALE | 40:40AMP
 | 30:30AMP
 | 20:20AMP
 | 10:10AMP
 | CRIMP

DESCRIPTION: Power Pin Female Crimp Type