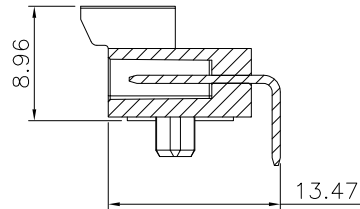
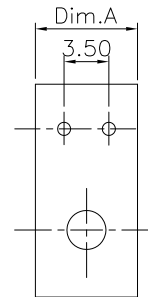


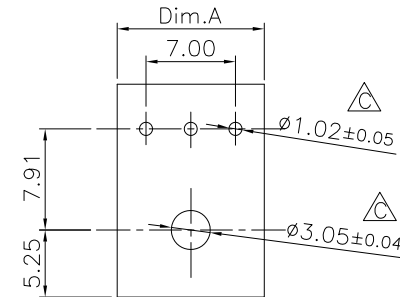
Circuits	DIM A	DIM B	Dim C
2	8.00	3.50	
3	11.50	7.00	
4	15.00	10.50	7.00
5	18.50	14.00	10.50
6	22.00	17.50	14.00
7	25.50	21.00	17.50
8	29.00	24.50	21.00



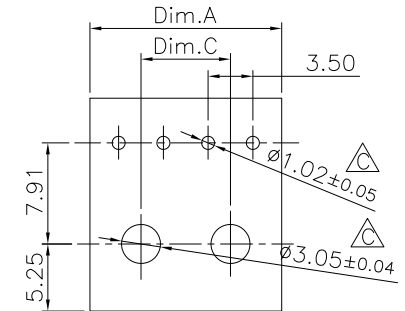
SEC:A-A



For 2P



For 3P

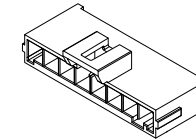


For 4~8P

P.C.B Layout

Specifications:  
 Current Rating:7~14.0A AC/DC  
 Voltage Rating:400V AC/DC  
 Contact Resistance:10m ohm. max.  
 Insulation Resistance:1000M ohm. min.  
 Withstanding Voltage:1800V AC For One Minute  
 Operating Temperature Range:-40°C ~ +120°C

Material  
 Insulator:LCP (UL94V-0)  
 Insulator Color:Black  
 Contact:High Performance Alloy  
 Plating:Matte Tin plated



RoHS Compliant

TOLERANCES ARE

**MORETHANALL**  
 PCB CONNECTORS  
 Cable ASSEMBLIES

煜倫股份有限公司

www.morethanall.com

DRAWING BY CY

CHECKED BY GENIUS

UNIT / mm SCALE 1 : 1

DATE

SIZE A4

X. ±  
 .X ± 0.20  
 .XX ± 0.10  
 .XXX ±  
 ANG ±

PJECTION

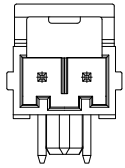
照片框

ORDER INFORMATION

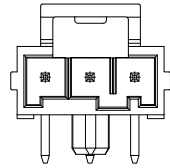
UF35-PRPBK-1Xxx-LF

SERIES LEADFREE  
 1X02:02 WAY  
 1X08:08 WAY  
 MALE POST BLACK  
 DIP 90°

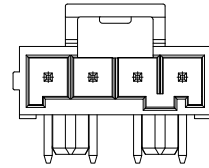
DESCRIPTION: 3.5mm Power Wafer R/A Single Row Dip Type



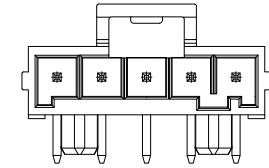
2 PIN



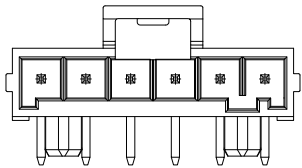
3 PIN



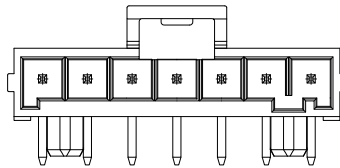
4 PIN



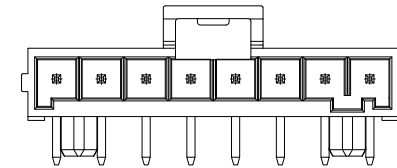
5 PIN



6 PIN



7 PIN



8 PIN

RoHS Compliant

TOLERANCES ARE

**MORETHANALL**  
PCB CONNECTORS  
Cable ASSEMBLIES

DRAWING BY CY

X, ±

CHECKED BY GENIUS

.X ± 0.20

UNIT / mm

SCALE 1 : 1

.XX ± 0.10

DATE

.XXX ±

ANG ±

照片框

ORDER INFORMATION

UF35-PRPBK-1Xxx-LF

SERIES

LEADFREE

1X02:02 WAY

1X08:08 WAY

MALE

BLACK

POST

DIP 90°

煜倫股份有限公司

www.morethanall.com

SIZE A4

PJECTION

DESCRIPTION: 3.5mm Power Wafer R/A Single Row Dip Type

Note:

1. Dimension

Tube Size: 17.8(H)X11.8(W)X635(L) (mm)

Inner Carton Size: 650(L)X140(W)X125(H) (mm)

Carton Size: 680(L)X280(W)X300(H) (mm)

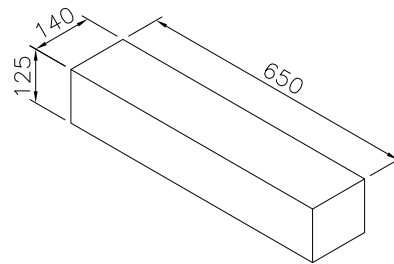
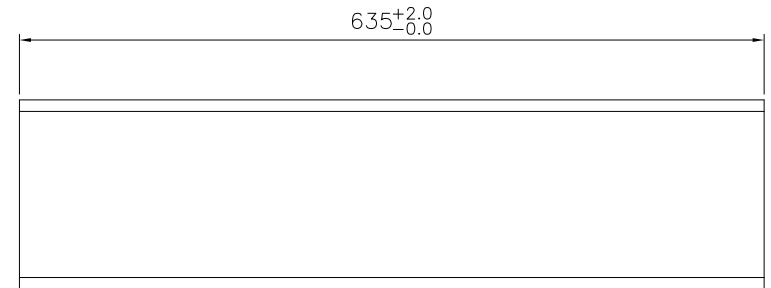
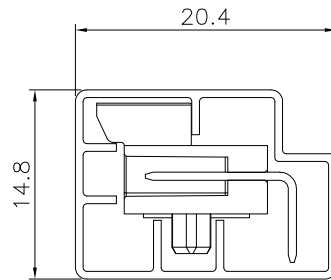
2. Quantity:

XX Pcs/Tube

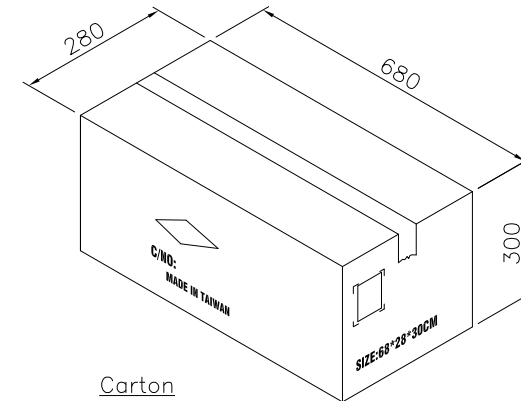
40 Tube/Inner Carton

4 Inner Carton/Carton

Pin.	Pcs/Tube	Pcs/Inner Carton	Q'TY/Carton
2	76	3,040	12,160
3	53	2,120	8,480
4	41	1,640	6,560
5	33	1,320	5,280
6	27	1,080	4,320
7	24	960	3,840
8	21	840	3,360



Inner Carton



Carton

**RoHS Compliant**

TOLERANCES ARE

**MORETHANALL**  
PCB CONNECTORS  
Cable ASSEMBLIES

煜倫股份有限公司

www.morethanall.com

DRAWING BY CY

CHECKED BY GENIUS

UNIT / mm

SCALE 1 : 1

DATE

SIZE A4

X, ±  
.X ± 0.20  
.XX ± 0.10  
.XXX ±  
ANG ±

PPOJECTION

照片框

**ORDER INFORMATION**

**UF35-PRPBK-1Xxx-LF**

SERIES | | | LEADFREE  
MALE | | | 1X02:02 WAY  
BLACK | | | 1X08:08 WAY  
POST | | |  
DIP 90°

DESCRIPTION: 3.5mm Power Wafer R/A Single Row Dip Type