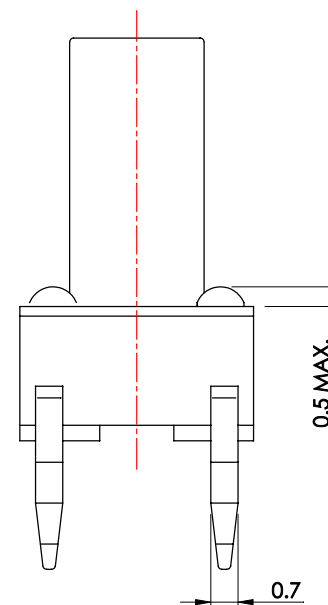
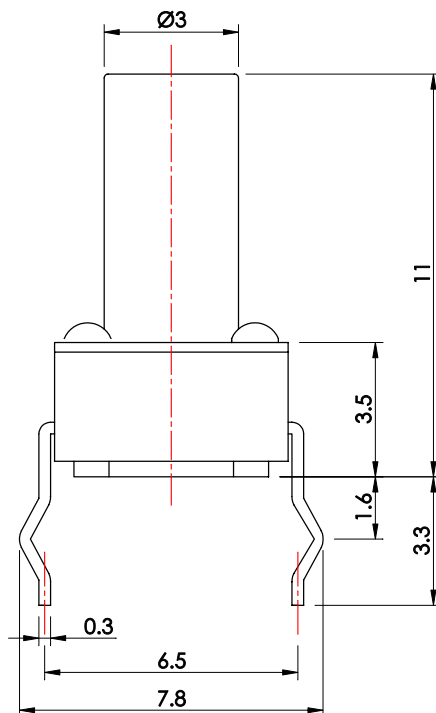
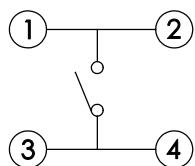


版本：V2.2

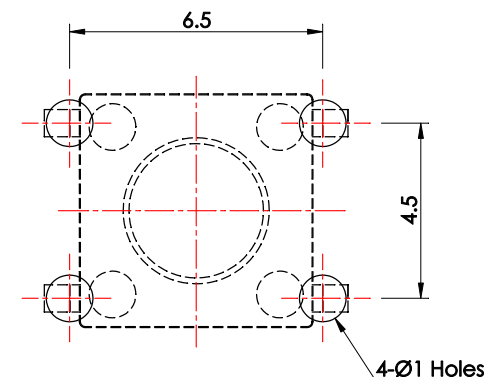
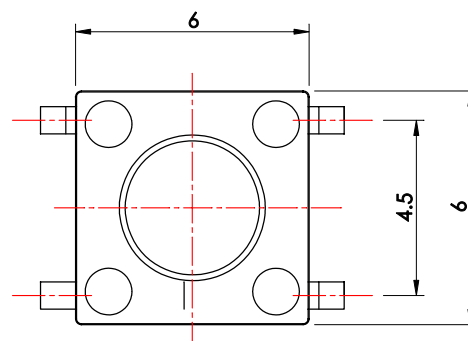
本圖面若與目錄之規格尺寸不符，以本圖面規格尺寸為主。

Below is our main specification if different from catalog.

CIRCUIT DIAGRAM



P.C.B. LAYOUT



SPECIFICATION

Rating: 50mA 12V DC.

Travel: 0.25±0.1mm.

Contact resistance: 100mΩ Max.

Operating force: 250±50g.

Minimum load: 10mA 3.3V DC.(reference only)

Operating life: 100,000 Cycles.

Soldering temperature: 250°C Max. for 3 sec.

Soldering time: 1 time only.

Note: Unwashable, don't be immersed by epoxy and organic solvent.

RoHS Compliant

TOLERANCES ARE

照片框

ORDER INFORMATION

TSW66-DQ110-250-LF

SERIES
LEADFREE
250g
11.0mm HIGH
4 PIN
DIP 180°

MORETHANALL
PCB CONNECTORS
Cable ASSEMBLIES

煜倫股份有限公司

www.morethanall.com

DRAWING BY CY

CHECKED BY GENIUS

UNIT / mm

SCALE 1 : 1

DATE

SIZE A4

PPOJECTION

X, ±
.X ±
.XX ±
.XXX ±
ANG ±

DESCRIPTION: