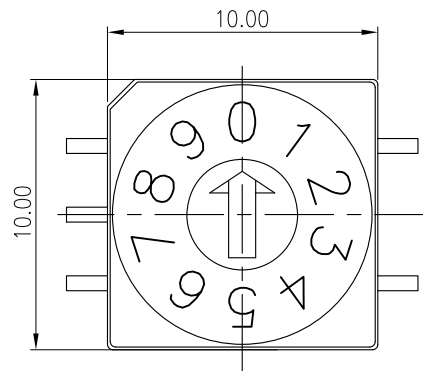
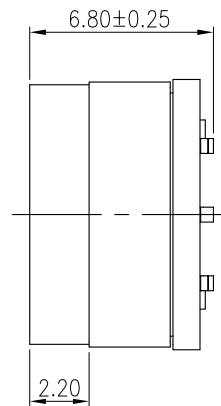


RTSW10-V068-16GA



RTSW10-V068-10GA

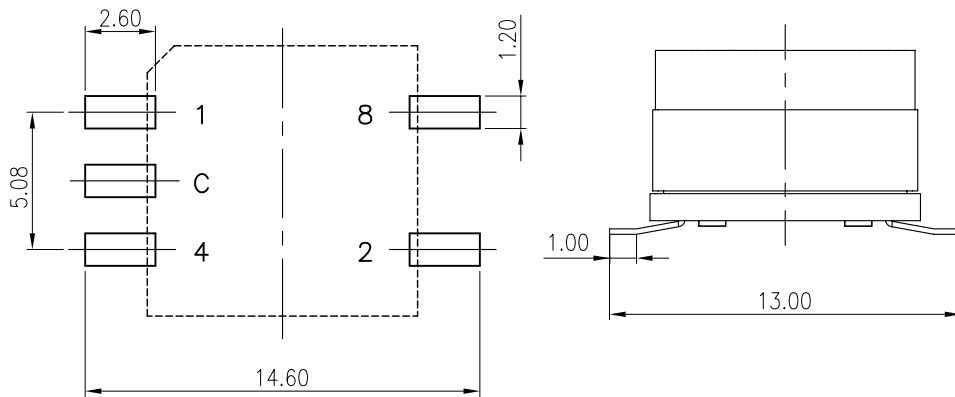


NOTE:

1.GENERAL TOLERANCES MAX.±0.20mm.

SPECIFICATIONS

- 1.RATING : NON SWITCHING RATING 24VDC 400mA
SWITCHING RATING 24VDC 150mA
- 2.LIFF : 10,000 STEPS
- 3.OPERATING FORCE : 400gf.cm Max.
- 4.INITIAL CONTACT RESISTANCE : 100mOhm Max.
- 5.DIELECTRIC STRENGTH : AC 250V 1 MINUTE
- 6.INSULATION RESISTANCE : 100MOhm Min.
(DC 250V MEGGER)
- 7.OPERATING TEMPERATURE : -60°C TO 125°C



P.C.B. LAYOUT

TYPE		CIRCUIT CHARACTERISTICS															
CODE	POSITION	● ON															
		0	1	2	3	4	5	6	7	8	9	A	B	C	D	E	F
1	1	●															
2	2		●	●													
4	4				●	●	●	●									
8	8								●	●	●	●	●	●	●	●	●

TYPE		CIRCUIT CHARACTERISTICS															
CODE	POSITION	● ON															
		0	1	2	3	4	5	6	7	8	9	A	B	C	D	E	F
1	1	●		●		●		●		●		●		●		●	
2	2		●	●													
4	4				●	●	●	●									
8	8								●	●	●	●	●	●	●	●	●

RoHS Compliant

TOLERANCES ARE

MORETHANALL
PCB CONNECTORS
Cable ASSEMBLIES

DRAWING BY CY

X.±

CHECKED BY GENIUS

.X±

UNIT / mm

SCALE 1:1

.XX±

DATE

.XXX±

ANG ±

SIZE A4

PPOJECTION

照片框

ORDER INFORMATION

RTSW10-V068-xxGA-LF

SERIES

LEADFREE
GREY CODE A TYPE

10
16
HIGH 6.8mm
180°SMT

DESCRIPTION: ROTARY SWITCH

煜倫股份有限公司

www.morethanall.com