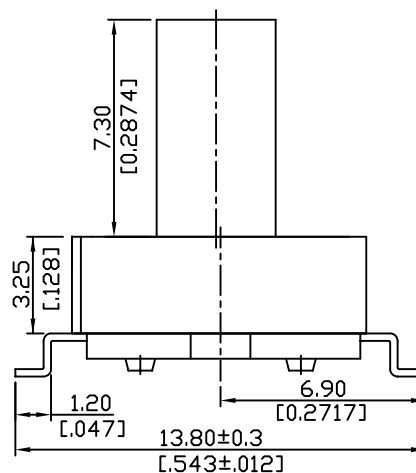
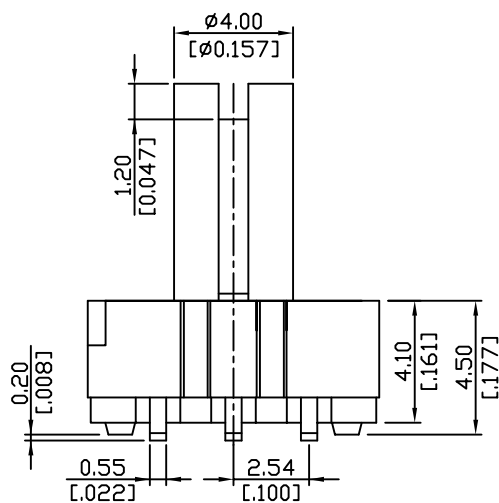


NOTE:

1. ALL DIMENSIONS ARE IN MILLIMETERS ,
BRACKETED DIMENSION ARE IN INCHS.
2. GENERAL TOLERANCE: ± 0.2 mm
3. OPERATING FORCE: 350 gf. max

Available Mode No.

RTSW-V118-10
RTSW-V118-16



TYPE	POSITION	CODE				
		10C	1	2	4	8
10 STEP	0	F	●	●	●	●
	1	E	○	●	●	●
	2	D	●	○	●	●
	3	C	○	○	●	●
	4	B	●	●	○	●
	5	A	○	●	○	○
	6	9	●	○	○	●
	7	8	○	○	○	●
	8	7	●	●	●	○
	9	6	○	○	○	○
16 STEP	A	5	○	○	○	○
	B	4	○	○	●	○
	C	3	●	●	○	○
	D	2	○	○	○	○
	E	1	●	○	○	○
	F	0	○	○	○	○

CIRCUIT CHART

RoHS Compliant

TOLERANCES ARE

MORETHANALL
PCB CONNECTORS
Cable ASSEMBLIES

煜倫股份有限公司

www.morethanall.com

DRAWING BY CY

CHECKED BY GENIUS

UNIT / mm SCALE 1 : 1

DATE

SIZE A4

X. ±
.X ±
.XX ±
.XXX ±
ANG ±

P PROJECTION

照片框

ORDER INFORMATION

RTSW-V118-xx-LF

SERIES | LEADFREE
10:10 STEP
16:16 STEP
HIGH 11.8mm
180°SMT

DESCRIPTION: ROTARY TYPE DIP SWITCH