

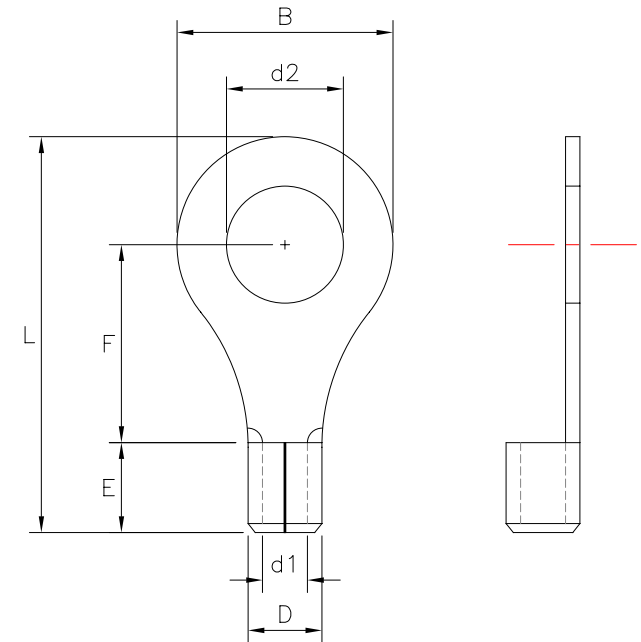
MAXIMUM ELECTRIC CURRENT

A. W. G	12	10
MAX AMP	35	48

NOTE:

1. BRAZED SEAM
2. WIRE RANGE: AWG 12-10/4-6mm²

WIRE RANGE AWG/mm ²	產品編號 ITEM NO.	d2 ±0.20	B ±0.20	F ±0.30	L ±1.00	E ±0.60	D ±0.30	d1 ±0.20
AWG 12-10 4-6 mm ²	RT-X32-10	3.2	7.2	5.9	15.5	6.0	5.6	3.4
	RT-X27T7-10	3.7	7.2	5.9	15.5			
	RT-X37T9-10	3.7	9.5	8.3	19.0			
	RT-X43T7-10	4.3	7.2	5.9	15.5			
	RT-X43T9-10	4.3	9.5	8.3	19.0			
	RT-X53-10	5.3	9.5	8.3	19.0			
	RT-X65-10	6.5	12.0	10.5	22.5			
	RT-X84-10	8.4	15.0	13.7	27.2			
	RT-X105-10	10.5	15.0	13.7	27.2			
RT-X130-10	13.0	19.2	16.0	31.6				



RoHS Compliant

TOLERANCES ARE

MORETHANALL
PCB CONNECTORS
Cable ASSEMBLIES

煜倫股份有限公司

www.morethanall.com

DRAWING BY CY

CHECKED BY GENIUS

UNIT / mm

SCALE 1:1

DATE

SIZE A4

X.±
.X±
.XX±
.XXX±
ANG ±

PPOJECTION

照片框

ORDER INFORMATION

RT-Xxx-10-LF
SERIES | LEADFREE
10-12 AWG
d2: mm
NON PVC

DESCRIPTION: