

Technical Data

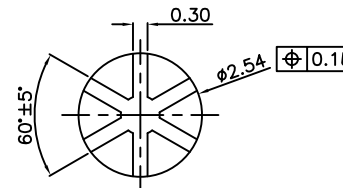
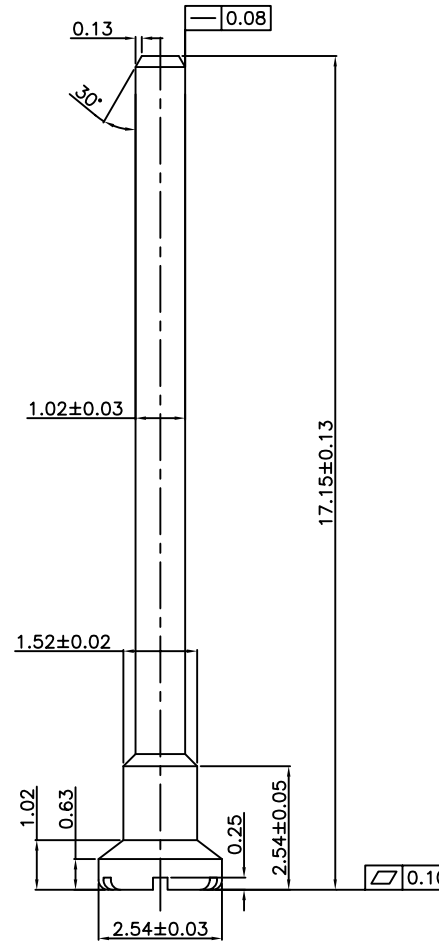
Material:
 Pin(outer sleeve): Brass,machined CuZn38Pb2
 Plating(outer sleeve):
 Tin plated:2mm/80μ"Ni, 5mm/200μ"Sn
 Gold Plsted:2mm/80μ"Ni,Full gold

Electrical
 Current rating:3Amps/contact max.
 Contact resistance: $\leq 4m\Omega$ /contact

Mechanical:
 Mechanical life cycle:min.200

RP-V10x-171-LF
 LEADFREE
 T:TIN/PLATE
 G:GOLD/PLATE

RoHS Compliant



PART NO. RP-V10x-171

DWG NO. RP-V10x-171

FILE NO.

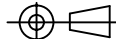
UNIT / mm

SCALE 1:1

CHECKED BY CY

DRAWING BY

PROJECTION



TOLERANCES ARE

.X ± 0.2
 .XX ± 0.1
 .XXX ±
 AWG

DESCRIP TION: □2.54mm*□1.02*L17.15mm圆Pin针

AREA

REVISIONS

HK

DATE

煜倫股份有限公司