

Technical Data

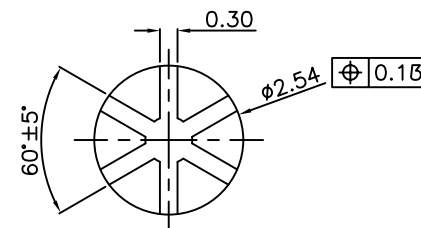
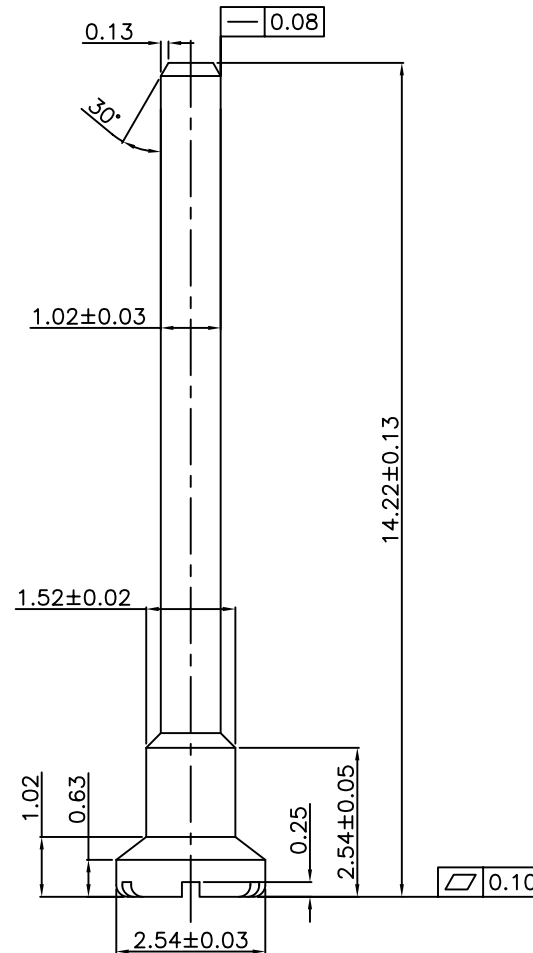
Material:
 Pin(outer sleeve): Brass,machined CuZn38Pb2
 Plating(outer sleeve):
 Tin plated:2mm/80 μ "Ni, 5mm/200 μ "Sn
 Gold Plsted:2mm/80 μ "Ni,Full gold

Electrical
 Current rating:3Amps/contact max.
 Contact resistance: \cong 4m Ω /contact

Mechanical:
 Mechanical life cycle:min.200

RP-V10x-142-LF
 LEADFREE
 T:TIN/PLATE
 G:GOLD/PLATE

RoHS Compliant



MORETHANALL
 CONNECTORS
 ASSEMBLIES

煜倫股份有限公司

PART NO. RP-V10x142		CHECKED BY CY	TOLERANCES ARE .X ± 0.2 .XX ± 0.1 .XXX ± AWG	DESCRIP TION: □2.54mm*□1.02*L14.22mm圆Pin针			
DWG NO. RP-V10x142				DRAWING BY	AREA	REVISIONS	HK
FILE NO.	UNIT / mm	SCALE 1:1	PROJECTION				