

Technical Data

Material:

Pin(outer sleeve): Brass,machined CuZn38Pb2

Plating(outer sleeve):

Tin plated:2mm/80 μ "Ni, 5mm/200 μ "Sn

Gold Plsted:2mm/80 μ "Ni,Full gold

Electrical

Current rating:3Amps/contact max.

Contact resistance: $\leq 4m\Omega$ /contact

Mechanical:

Mechanical life cycle:min.200

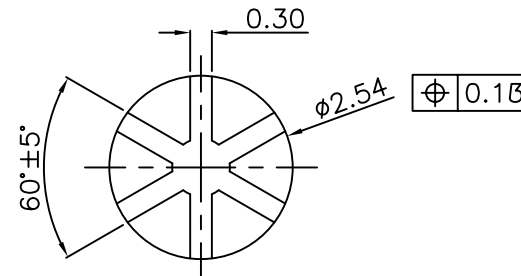
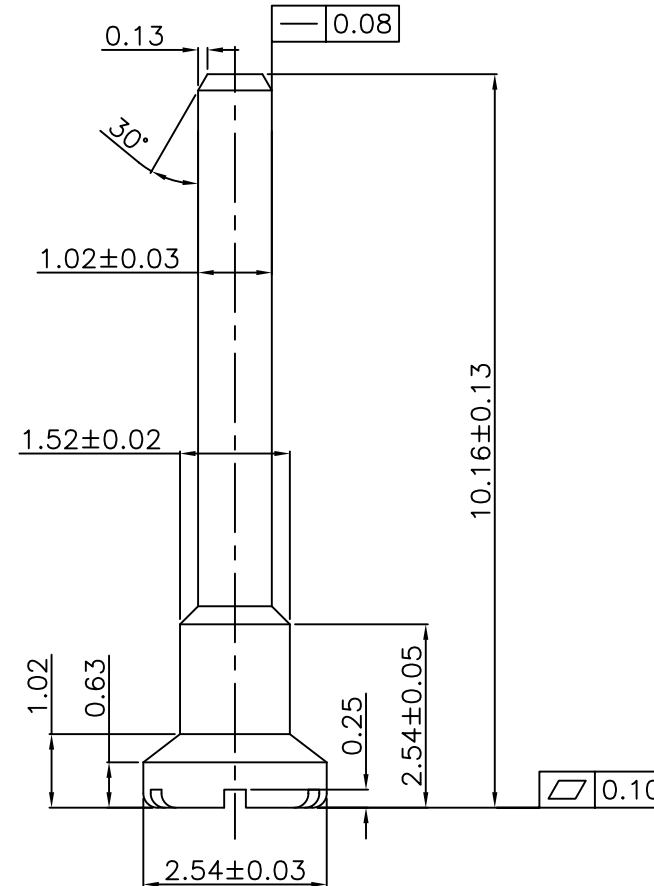
RP-V10x-101-LF

LEADFREE

T:TIN/PLATE

G:GOLD/PLATE

RoHS Compliant



MORETHANALL
CONNECTORS
ASSEMBLIES

PART NO. RP-V10x-101

DWG NO. RP-V10x-101

CHECKED BY CY

TOLERANCES ARE

DESCRIP TION: $2.54mm \times 1.02 \times L10.16mm$ 圆Pin针

FILE NO.

DRAWING BY

.X ± 0.2

.XX ± 0.1

.XXX \pm

AWG

AREA

REVISIONS

HK

DATE

煜倫股份有限公司

UNIT / mm

SCALE 1:1

PROJECTION

