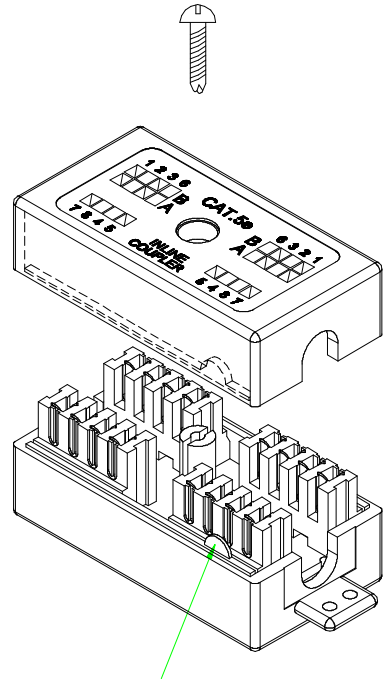
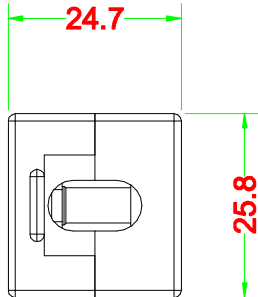
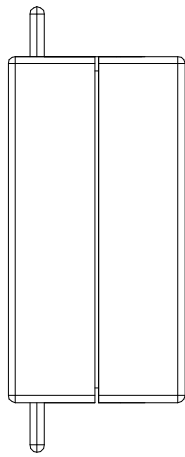


Color coding information

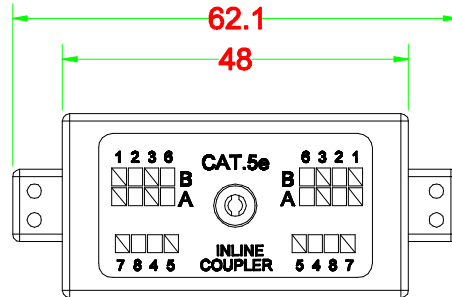
T568B:	T568A:
1—WH/OR	1—WH/GN
2—OR	2—GN
3—WH/GN	3—WH/OR
4—BL	4—BL
5—WH/BL	5—WH/BL
6—GN	6—OR
7—WH/BR	7—WH/BR
8—BR	8—BR

Dimensions:



Direction Key

[Cable-Tie Attached]



Performance:

Meets Cat.5e EIA/TIA 568B.1 Standard.

Materials:

Plastic Body : Fireproof ABS UL-94V0
 PCB : FR-4 / 1.6mm UL-94V0
 IDC Body : Fireproof ABS UL-94V0
 IDC Pin : Bronze & Tinned

Label Color Code : T568 A/B

IDC Description : For 22-26 AWG.

For 110 or Krone punch-down Tool

Electrical Specifications:

Insulation Resistance : 500M ohms (min.)
 Contact Resistance : 20m ohms (max.)
 Current Rating : 1.5 Amps .
 DC Resistance : 0.1 ohm (max.)
 Withstanding Voltage : 1000 VAC RMS @ 60Hz / 1 min.

Mechanical Specifications:

IDC Punch Down Cycle : Over 25 Cycles (min.)

Operation Temperature : -40 ~ +70 degree / C

RJX2-FSCSN-0808-LF
 LEADFREE

RoHS Compliant



PART NO. RJX2-FSCSN-0808		CHECKED BY CY	TOLERANCES ARE .X ± 0.2 .XX ± .XXX ± AWG	DESCRIP TION: Cat.5e INLINE COUPLER (UTP)
DWG NO. RJX2-FSCSN-0808				
FILE NO.		DRAWING BY	AREA	REVISIONS
UNIT / mm	SCALE 1:1	PROJECTION		

煜倫股份有限公司