

J

I

H

G

F

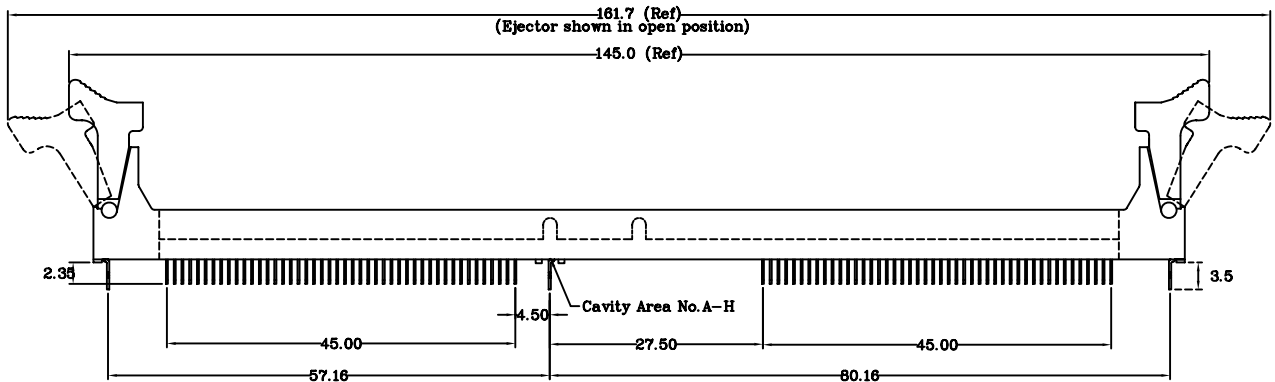
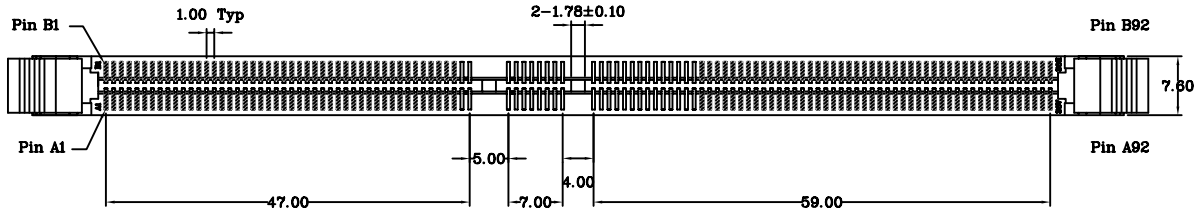
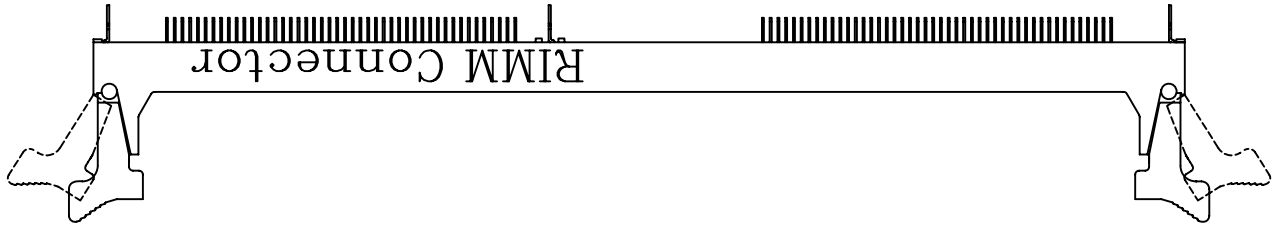
E

D

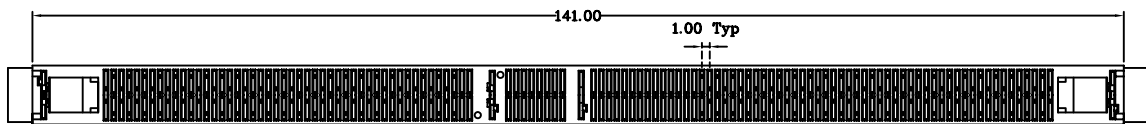
C

B

A

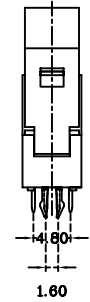


由2.7變更為2.35



Notes

- ◆ Material
 - Housing High Temperature Thermoplastic(Nylon 6T)
UL 94V-0 Rated. Color: Black.
 - Ejector High Temperature Thermoplastic(Nylon)
UL 94V-0 Rated. Color: Natural.
 - Terminal Copper Alloy.
 - Finish Contact Area: Au Over Ni
Tail Area: SnPb Over Ni
Board Locks: SnPb Over Ni
 - Cavity No.A-H
- ◆ Mechanical
 - Contact Retention . . . 450 Grams Min.
 - Insertion Force 173 Grams Max. Per Mated Pair
 - Withdrawal Force 74 Grams Max. Per Mated Pair
- ◆ Electrical Specification
 - Contact Resistance . . . 20 Milliohms Max. In Initial.
 - Current 0.5A
 - Insulation Resistance . . 1 Megohm Minimum.
 - Withstand Voltage . . . 500V Max.
 - Operating Temperature . -55IJ to 105IJ.

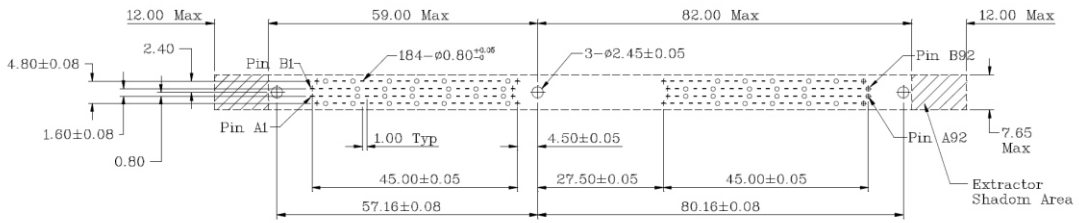


RIM-D-184-LF
LEADFREE
RoHS Compliant

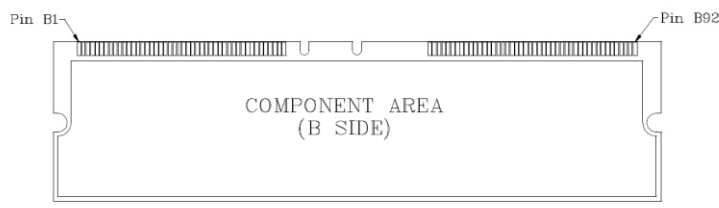
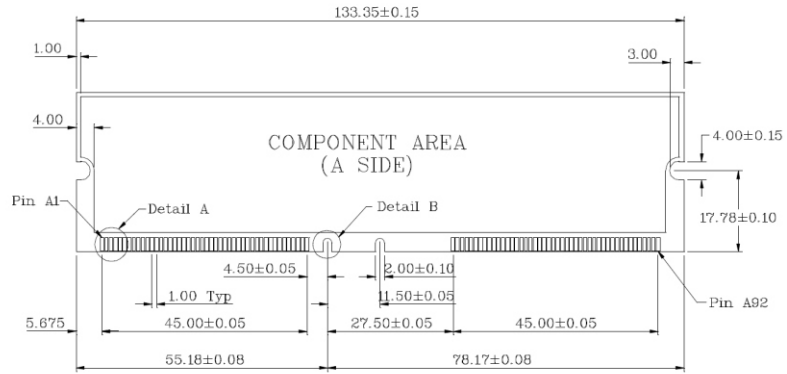


PART NO. RIM-D-184		CHECKED BY CY		TOLERANCES ARE .X ± 0.38 .XX ± 0.25 XXX ± AWG	DESCRIP TION: RIMM Loose Piece Pins Connectors
DWG NO. RIM-D-184		DRAWING BY			
FILE NO.		PROJECTION		AREA	REVISIONS
UNIT / mm	SCALE 1:1			HK	DATE

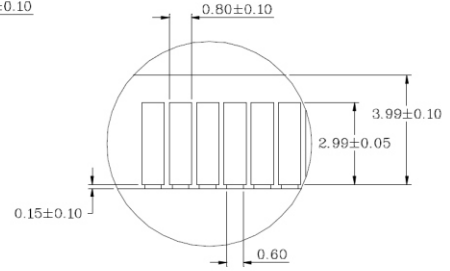
煜倫股份有限公司



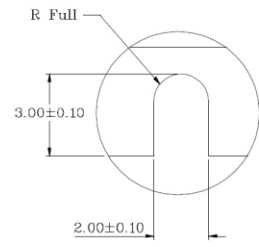
P.C. Board Hole Layout



Daughter Card Requirements



Detail A



Detail B



PART NO. **RIM-D-184**

DWG NO. **RIM-D-184**

CHECKED BY **CY**

TOLERANCES ARE

DESCRIP TION:

FILE NO.

DRAWING BY

.X ± 0.2
.XX ±
.XXX ±
AWG

AREA	REVISIONS	HK	DATE
------	-----------	----	------

UNIT / mm

SCALE 1:1

PROJECTION

煜倫股份有限公司