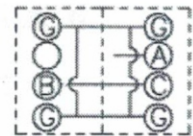
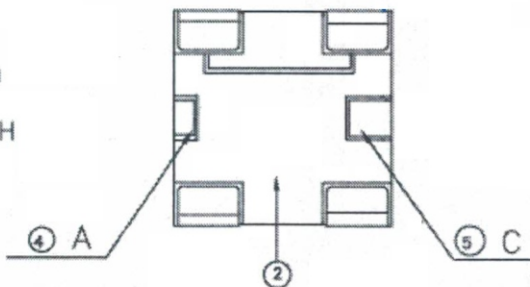


Not mated with the Plug(N.C)

NOTE: UNLESS OTHERWISE SPECIFIED
 1.DIMENSION SHALL BE INTERPRETED PER ANSI Y14.5M-1994.
 2.DIMENSION WITH MARKED" ▼ SHOULD SPECIFIED ON INSPECTION PLAN.
 3.CONTACT MATING FORCE SHOULD NOT OVER 0.6N MAX.
 4.CONTACT MATERIAL: COPPER ALLOY.
 5.INSULATER : PLASTIC UL94 V-0
 6.CONTACT FINSH: GOLD PLATED 5u,* SHELL FINSH: 1u, ALL OVER 50u NICKEL UNDER PLATED.
 7.ALL MATERIAL MEET RoHS SPECIFICATION AND IN CONFORMITY WITCH REACH & SVHC STANDARD STIPULAIONS.



Mated with the Plug(N.O)

ITEM	Q'TY	DESCRIPTION
⑥		MATING PLUG (PROBE)
⑤	1	CONTACT C, GOLD PLATING
④	1	CONTACT A, GOLD PLATING
③	1	HOUSING, CONTACT G, GOLD FLASH
②	1	HOUSING, LCP PLASTIC UL94 V-0
①	1	HOUSING, LCP PLASTIC UL94 V-0
BOM LIST		

RoHS Compliant

TOLERANCES ARE

MORETHANALL
 PCB CONNECTORS
 Cable ASSEMBLIES

煜倫股份有限公司

www.morethanall.com

DRAWING BY CY

CHECKED BY GENIUS

UNIT / mm SCALE 1 : 1

DATE

SIZE A4 PPROJECTION

X ± 0.50
 X ± 0.25
 .XX ± 0.15
 .XXX ± 0.10
 ANG ± 2°

照片框

ORDER INFORMATION

RFS-JV-50-LF
 SERIES | T LEADFREE
 50 OHM
 180°SMT
 JACK

DESCRIPTION: