

**MATERIAL**

INSULATION: NYLON

MATERIAL: BRASS

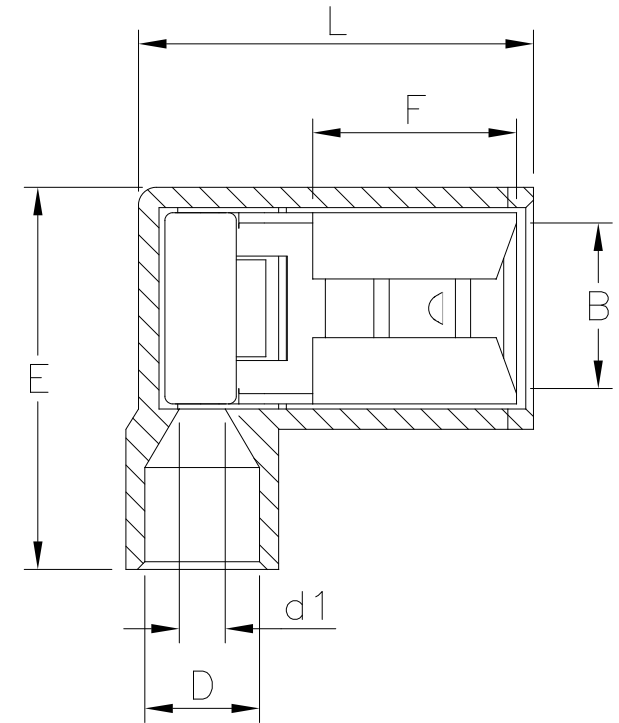
TIN PLATING

**MAXIMUM ELECTRIC CURRENT**

A. W. G	22	20	18	16	14
MAX AMP	3	4	7	10	15

**NOTE:**

1. MAXIMUM ELECTRICAL RATING: 105°C 300 VOLTS
2. WIRE RANGE: 22-18 AWG / 0.5-1.5 mm<sup>2</sup>  
INSULATED COLOR: RED
3. WIRE RANGE: 16-14 AWG / 1.5-2.5 mm<sup>2</sup>  
INSULATED COLOR: BLUE
4. MATERIAL THICKNESS: t  
TOLERANCE: ±0.05



WIRE RANGE AWG/mm <sup>2</sup>	產品編號 ITEM NO.	NEMA TAB	B ±0.20	F ±0.30	L ±0.60	E ±0.60	D ±0.50	d1 ±0.20	t
22-18 AWG 0.5-1.5 mm <sup>2</sup>	Q250-GT8NF-18	0.8x6.4	6.6	7.9	15.5	15.0	4.5	1.7	0.45
16-14 AWG 1.5-2.5 mm <sup>2</sup>	Q250-GT8NF-14	0.8x6.4	6.6	7.9	15.5	15.0	4.5	2.3	0.45

**RoHS Compliant**

TOLERANCES ARE

**MORETHANALL**  
PCB CONNECTORS  
Cable ASSEMBLIES

煜倫股份有限公司

www.morethanall.com

DRAWING BY CY

CHECKED BY GENIUS

UNIT / mm SCALE 1:1

DATE

SIZE A4

X, ±  
.X ±  
.XX ±  
.XXX ±  
ANG ±

PJECTION



**ORDER INFORMATION**

Q250-GT8NF-xx-LF  
SERIES | | | | | LEADFREE  
14:14-16AWG  
18:18-22AWG  
FLAG | | | FULL  
TERMINAL | | | NYLON  
0.8t

DESCRIPTION: