

MATERIAL

INSULATION: NYLON

MATERIAL: BRASS

TIN PLATING

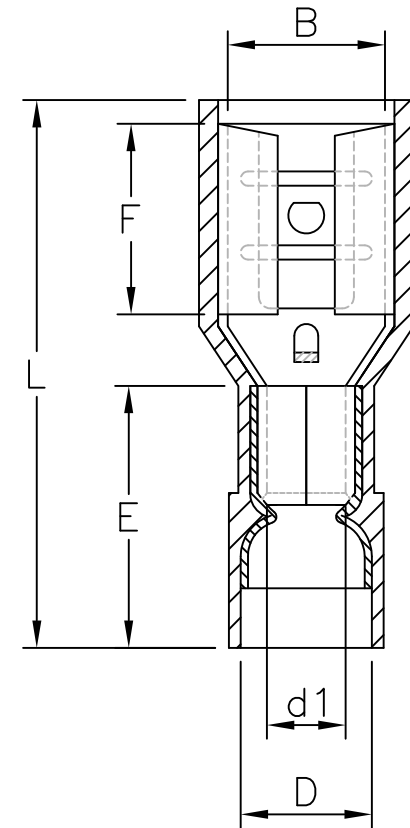
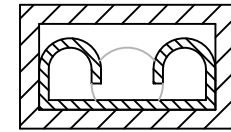
MAXIMUM ELECTRIC CURRENT

A. W. G	22	20	18	16	14
MAX AMP	3	4	7	10	15

NOTE:

1. MAXIMUM ELECTRICAL RATING: 105°C 300 VOLTS
2. REINFORCEMENT SLEEVE: C TYPE SLEEVE
3. WIRE RANGE: 22-16 AWG / 0.5-1.5 mm²
INSULATED COLOR: RED
4. WIRE RANGE: 16-14 AWG / 1.5-2.5 mm²
INSULATED COLOR: BLUE
5. MATERIAL THICKNESS: t
TOLERANCE: ±0.05

WIRE RANGE AWG/mm ²	產品編號 ITEM NO.	NEMA TAB	B	F ±0.30	L ±1.00	E ±0.60	D ±0.50	d1 ±0.20	t
22-16 AWG 0.5-1.5 mm ²	Q250-FT8NFQC-16	0.8x6.4	6.6±0.20	7.9	22.0	11.0	4.2	1.7	0.4
16-14 AWG 1.5-2.5 mm ²	Q250-FT8NFQC-14	0.8x6.4	6.6±0.20	7.9	22.0	11.0	4.9	2.3	0.4



RoHS Compliant

TOLERANCES ARE

MORETHANALL
PCB CONNECTORS
Cable ASSEMBLIES

煜倫股份有限公司

www.morethanall.com

DRAWING BY CY

CHECKED BY GENIUS

UNIT / mm SCALE 1:1

DATE

SIZE A4

X, ±
.X ±
.XX ±
.XXX ±
ANG ±

P PROJECTION



ORDER INFORMATION

Q250-FT8NFQC-xx-LF
SERIES | | | | | LEADFREE
16:16-22AWG
14:14-16AWG
FEMALE | | | | | COPPER
TERMINAL | | | | | Q TYPE
0.8mm TAB FULL
NYLON

DESCRIPTION: