

MATERIAL

INSULATION: NYLON

MATERIAL: BRASS

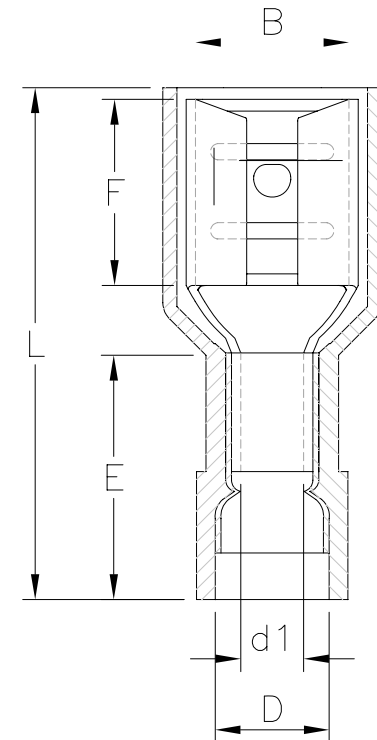
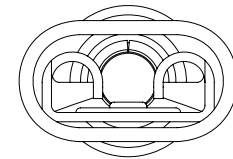
TIN PLATING

MAXIMUM ELECTRIC CURRENT

| | | | | | | | |
|---------|----|----|----|----|----|----|----|
| A. W. G | 22 | 20 | 18 | 16 | 14 | 12 | 10 |
| MAX AMP | 3 | 4 | 7 | 10 | 15 | 20 | 24 |

NOTE:

1. MAXIMUM ELECTRICAL RATING: 105°C 300 VOLTS
2. REINFORCEMENT SLEEVE: C TYPE SLEEVE
3. WIRE RANGE: 22-16 AWG / 0.5-1.5 mm²
INSULATED COLOR: RED
4. MATERIAL THICKNESS: t
TOLERANCE: ±0.05



| WIRE RANGE AWG/mm ² | 產品編號 ITEM NO. | NEMA TAB | B ±0.20 | F ±0.30 | L ±1.00 | E ±0.60 | D ±0.50 | d1 ±0.20 | t |
|--------------------------------------|------------------|----------|------------|------------|------------|------------|------------|-------------|-----|
| 22-16 AWG 0.5-1.5 mm ² | Q250-FT8NFC-16 | 0.8x6.4 | 6.6 | 7.9 | 22.0 | 10.5 | 4.2 | 1.7 | 0.4 |

RoHS Compliant

TOLERANCES ARE

MORETHANALL
PCB CONNECTORS
Cable ASSEMBLIES

煜倫股份有限公司

www.morethanall.com

DRAWING BY CY

CHECKED BY GENIUS

UNIT / mm

SCALE 1:1

DATE

SIZE A4

PPOJECTION

X. ±
.X ±
.XX ±
.XXX ±
ANG ±



ORDER INFORMATION

Q250-FT8NFC-16-LF

SERIES | | | | | LEADFREE
FEMALE | | | | | 16-22AWG
TERMINAL | | | | | COPPER
FULL
NYLON
0.8mm TAB

DESCRIPTION: