

MATERIAL

INSULATION: NYLON

MATERIAL: BRASS

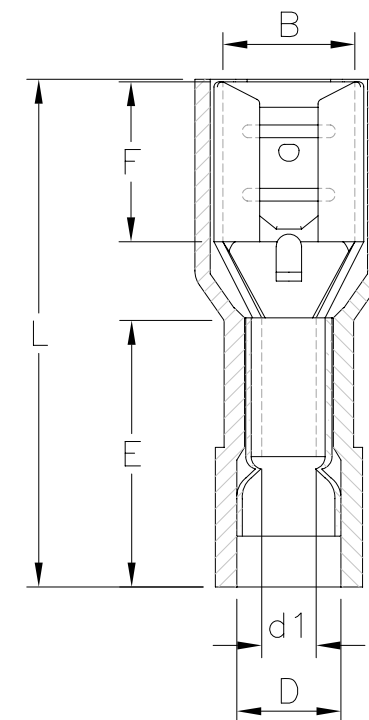
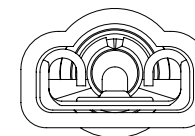
TIN PLATING

MAXIMUM ELECTRIC CURRENT

A. W. G	22	20	18	16	14
MAX AMP	3	4	7	10	15

NOTE:

1. MAXIMUM ELECTRICAL RATING: 105°C 300 VOLTS
2. REINFORCEMENT SLEEVE: C TYPE SLEEVE
3. WIRE RANGE: 22-16 AWG / 0.5-1.5 mm²
INSULATED COLOR: RED
4. WIRE RANGE: 16-14 AWG / 1.5-2.5 mm²
INSULATED COLOR: BLUE
5. MATERIAL THICKNESS: t
TOLERANCE: ±0.05



WIRE RANGE AWG/mm ²	產品編號 ITEM NO.	NEMA TAB	B ±0.20	F ±0.30	L ±1.00	E ±0.60	D ±0.50	d1 ±0.20	t
22-16 AWG 0.5-1.5 mm ²	Q187-FT5NFAC-16	0.5x4.8	5.0	6.5	20.0	10.5	4.2	1.7	0.35
	Q187-FT8NFAC-16	0.8x4.8	5.0	6.5	20.0	10.5	4.2	1.7	0.35
16-14 AWG 1.5-2.5 mm ²	Q187-FT5NFAC-14	0.5x4.8	5.0	6.5	20.0	10.5	4.9	2.3	0.35
	Q187-FT8NFAC-14	0.8x4.8	5.0	6.5	20.0	10.5	4.9	2.3	0.35



www.morethanall.com

RoHS Compliant

DRAWING BY CY
CHECKED BY GENIUS
UNIT / mm SCALE 1:1
DATE
SIZE A4

TOLERANCES ARE

X. ±
.X ±
.XX ±
.XXX ±
ANG ±



ORDER INFORMATION

Q187-FTxNFAC-xx-LF

SERIES: Q187-FTxNFAC-xx-LF

FEMALE: 14: 14-16 AWG LEADFREE
16: 16-22 AWG COPPER

TERMINAL: A TYPE

5: THICKNESS 0.5mm FULL
8: THICKNESS 0.8mm NYLON

DESCRIPTION: