

MATERIAL

INSULATION: NYLON

MATERIAL: BRASS

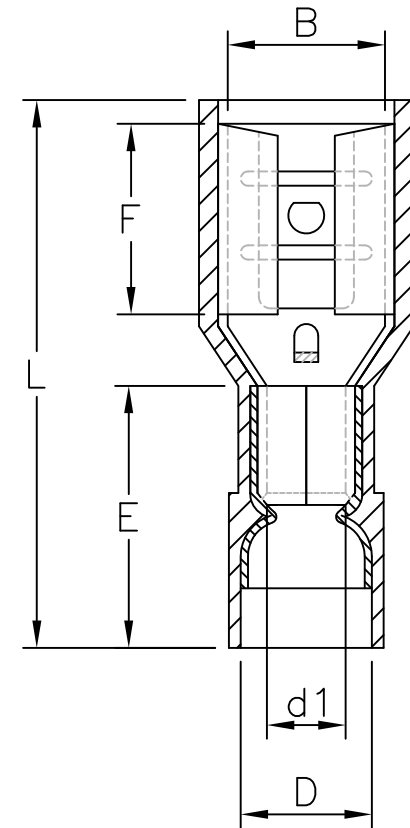
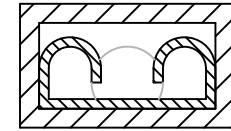
TIN PLATING

MAXIMUM ELECTRIC CURRENT

A. W. G	22	20	18	16	14
MAX AMP	3	4	7	10	15

NOTE:

1. MAXIMUM ELECTRICAL RATING: 105°C 300 VOLTS
2. REINFORCEMENT SLEEVE: C TYPE SLEEVE
3. WIRE RANGE: 22-16 AWG / 0.5-1.5 mm²
INSULATED COLOR: RED
4. WIRE RANGE: 16-14 AWG / 1.5-2.5 mm²
INSULATED COLOR: BLUE
5. MATERIAL THICKNESS: t
TOLERANCE: ±0.05



WIRE RANGE AWG/mm ²	產品編號 ITEM NO.	NEMA TAB	B	F ±0.30	L ±1.00	E ±0.60	D ±0.50	d1 ±0.20	t
22-16 AWG 0.5-1.5 mm ²	Q110-FT5NFQC-16	0.5x2.8	3.2±0.30	6.4	19.0	10.5	4.2	1.7	0.25
	Q110-FT8NFQC-16	0.8x2.8	3.2±0.30	6.4	19.0	10.5	4.2	1.7	0.25

MORETHANALL
PCB CONNECTORS
Cable ASSEMBLIES
煜倫股份有限公司

www.morethanall.com

RoHS Compliant

DRAWING BY CY

CHECKED BY GENIUS

UNIT / mm

SCALE 1:1

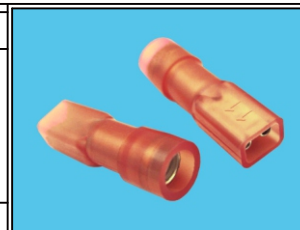
DATE

SIZE A4

TOLERANCES ARE

X. ±
.X ±
.XX ±
.XXX ±
ANG ±

PPOJECTION



ORDER INFORMATION

Q110-FTxNFQC-16-LF
SERIES | | | | | | | | | | LEADFREE
16-22AWG
FEMALE COPPER
TERMINAL Q TYPE
5:0.5mm TAB FULL
8:0.8mm TAB NYLON

DESCRIPTION: