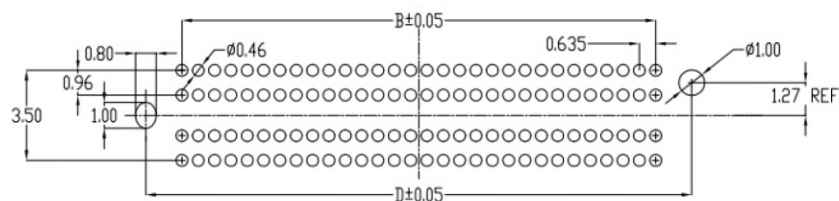
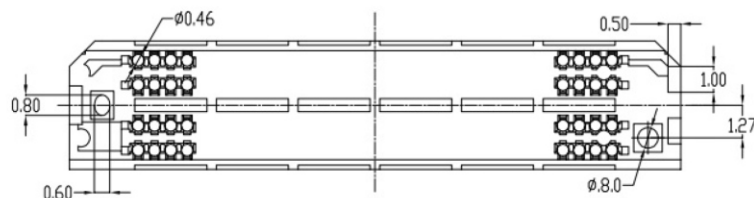


SPECIFICATIONS

- 1.CURRENT RATING: 1.34A .
- 2.VOLTAGE RATING 155 VAC.
- 3.OPERATING TEMPERATURE RANGE:-55°C TO +125°C
- 4.HIGH-SPEED CHANNEL PERFORMANCE 56Gbps

ADF6	K	L	H
3.5	3.23	3.65	3.73
7.5	7.23	7.65	7.73

STACK HEIGHT				
ADF6	ADM6			
	1.5	3.5	6.5	8.5
3.5	5.00	7.00	10.00	12.00
7.5	9.00	11.00	14.00	16.00



Recommended PC board pattern
(TOP VIEW)

Circuits	A	B	C	D
4x10	11.07	5.715	8.595	8.52
4x20	17.42	12.065	14.945	14.87
4x30	23.77	18.415	21.295	21.22
4x40	30.12	24.765	27.645	27.57
4x50	36.47	31.115	33.995	33.92
4x60	42.82	37.465	40.345	40.27
4x70	49.17	43.815	46.695	46.62
4x80	55.52	50.165	53.045	52.97
4x90	61.87	56.515	59.395	59.32
4x100	68.22	62.865	65.745	65.67

RoHS Compliant

TOLERANCES ARE

MORETHANALL
PCB CONNECTORS
Cable ASSEMBLIES

DRAWING BY CY

CHECKED BY GENIUS

UNIT / mm

SCALE 1 : 1

DATE

SIZE A4

PPOJECTION

X, ±
.X ± 0.30
.XX ± 0.13
.XXX ± 0.05
ANG ± 2°

照片框

ORDER INFORMATION

NP064K-SV035P-xxx-LF

SERIES | | | LEADFREE
| | | 040-400WAY
| | | POST
| | | UNMATED HIGH/ 3.5mm
| | | 180°SMT
| | | FEMALE

DESCRIPTION: 0.365mm BTB SOCKET

煜倫股份有限公司

www.morethanall.com