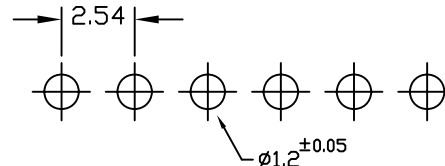
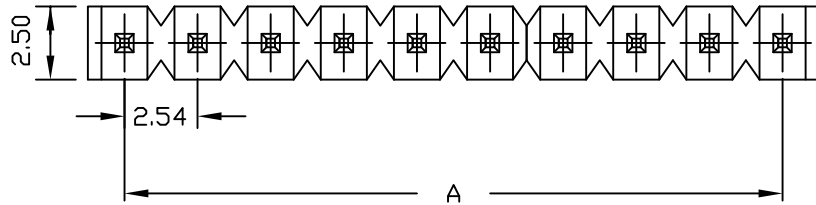
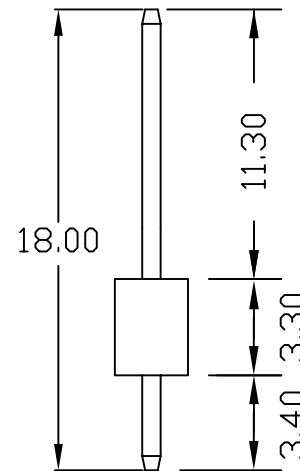
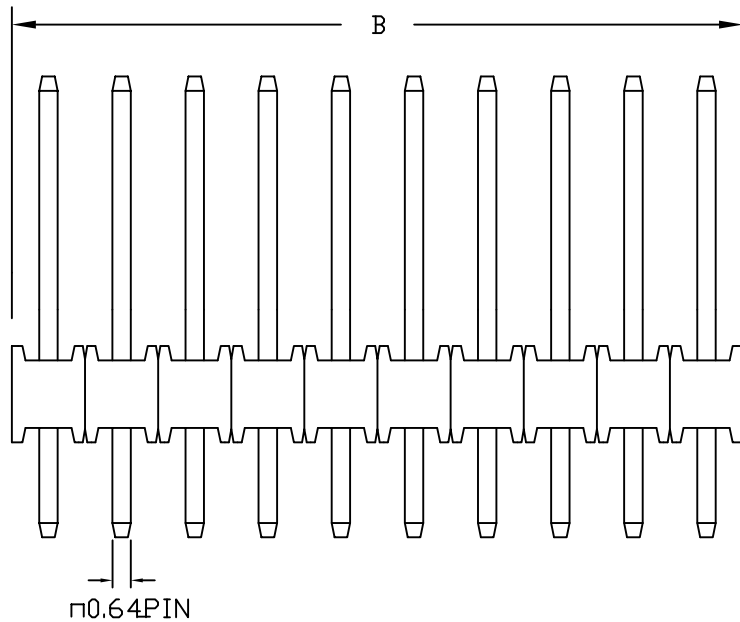


### SPECIFICATIONS

Pitch: 2.54mm  
 Current rating : 3A AC,DC  
 Voltage rating : 250V AC,DC  
 Temperature range:-25 C ~+85 C  
 Insulation resistance : 1000M  
 Withstanding voltage : 1000V ac



PCB LAYOUT COMPONENT SIDE



Poles	Dimension	
	A	B
2	2.54	5.08
3	5.08	7.62
4	7.62	10.16
5	10.16	12.70
6	12.70	15.24
7	15.24	17.78
8	17.78	20.32
9	20.32	22.86
10	22.86	25.40
11	25.40	27.94
12	27.94	30.48
13	30.48	33.02
14	33.02	35.56
15	35.56	38.10
16	38.10	40.64
17	40.64	43.18
18	43.18	45.72
19	45.72	48.26
20	48.26	50.80

RoHS Compliant

TOLERANCES ARE

**MORETHANALL**  
 PCB CONNECTORS  
 Cable ASSEMBLIES

DRAWING BY CY

X.±

CHECKED BY GENIUS

.X±

UNIT / mm

SCALE 1 : 1

.XX±

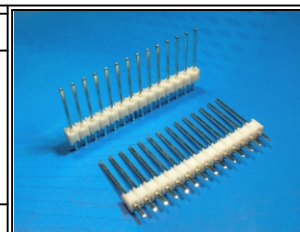
DATE

.XXX±

ANG±

SIZE A4

P PROJECTION



### ORDER INFORMATION

MX-DL-xx-LF  
 SERIES | LEADFREE  
 | 02~20 WAY  
 | LONG  
 | DIP 180°

煜倫股份有限公司

www.morethanall.com

DESCRIPTION: