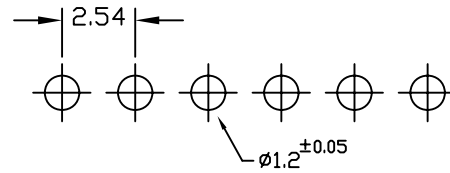
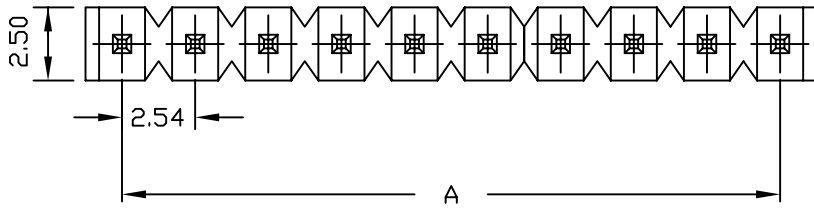


SPECIFICATIONS

Pitch: 2.54mm
 Current rating : 3A AC,DC
 Voltage rating : 250V AC,DC
 Temperature range:-25 C ~+85 C
 Insulation resistance : 1000M
 Withstanding voltage : 1000V ac

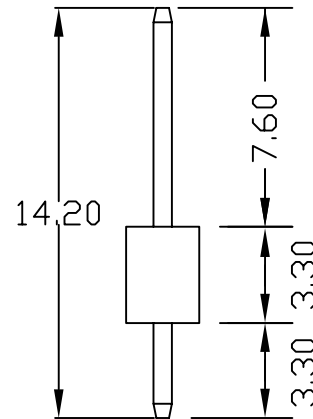
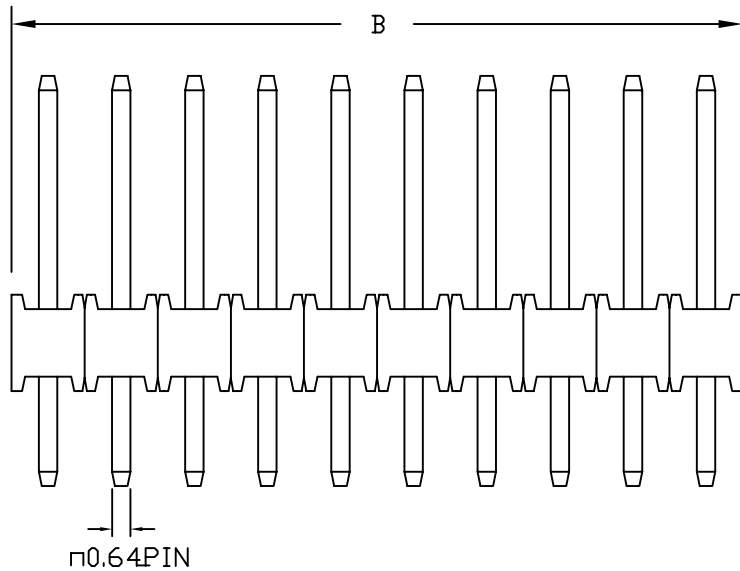


PCB LAYOUT COMPONENT SIDE

MX-D-xx-LF

LEADFREE

RoHS Compliant



Poles	Dimension	
	A	B
2	2.54	5.08
3	5.08	7.62
4	7.62	10.16
5	10.16	12.70
6	12.70	15.24
7	15.24	17.78
8	17.78	20.32
9	20.32	22.86
10	22.86	25.40
11	25.40	27.94
12	27.94	30.48
13	30.48	33.02
14	33.02	35.56
15	35.56	38.10
16	38.10	40.64
17	40.64	43.18
18	43.18	45.72
19	45.72	48.26
20	48.26	50.80

MORETHANALL
 CONNECTORS
 ASSEMBLIES

PART NO. MX-D-xx

DWG NO. MX-D-xx

FILE NO.

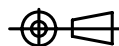
UNIT / mm

SCALE 1:1

APPROVED BY CY

DRAWING BY

PROJECTION



TOLERANCES ARE

.X
 .XX
 .XXX
 AWG

DESCRIPTION:

AREA

REVISIONS

HK

DATE

煜倫股份有限公司