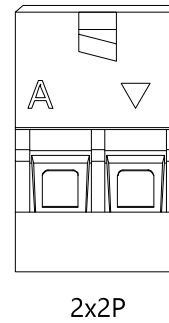
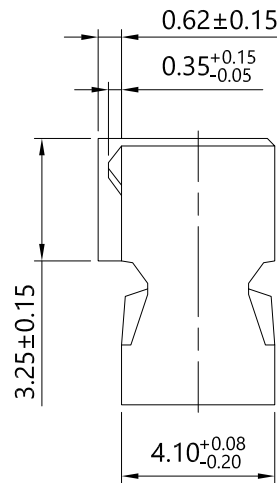
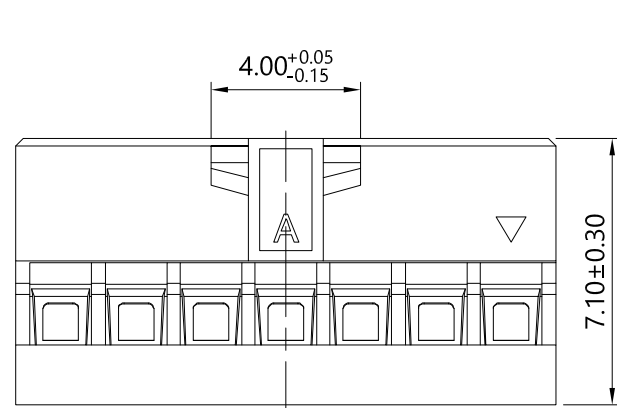
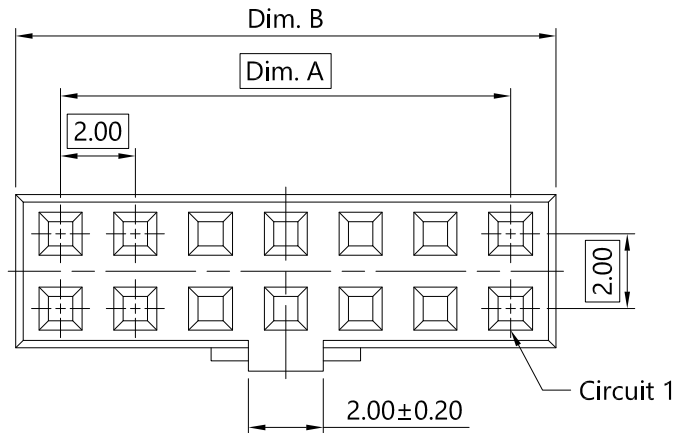


NOTE

Dim. B Tolerances: 02~09P±0.15
 10~17P±0.20
 18~25P±0.30



SPECIFICATION

Current Rating: 2A Max.
 Voltage Rating: 200V AC
 Contact Resistance: 20mΩ Max.
 Insulation Resistance: 1000MΩ Min.
 Withstanding Voltage: 650V AC for one minute
 Operating Temperature: -55°C to +125°C

MATERIAL

Insulator: Nylon 66+G.F., UL94V-0, Black

No. of Contacts per Row	Dimensions		No. of Contacts per Row	Dimensions	
	A	B		A	B
2	2.00	4.40	14	26.00	28.40
3	4.00	6.40	15	28.00	30.40
4	6.00	8.40	16	30.00	32.40
5	8.00	10.40	17	32.00	34.40
6	10.00	12.40	18	34.00	36.40
7	12.00	14.40	19	36.00	38.40
8	14.00	16.40	20	38.00	40.40
9	16.00	18.40	21	40.00	42.40
10	18.00	20.40	22	42.00	44.40
11	20.00	22.40	23	44.00	46.40
12	22.00	24.40	24	46.00	48.40
13	24.00	26.40	25	48.00	50.40

RoHS Compliant

TOLERANCES ARE

MORETHANALL
 PCB CONNECTORS
 Cable ASSEMBLIES

煜倫股份有限公司

www.morethanall.com

DRAWING BY CY
 CHECKED BY GENIUS
 UNIT / mm SCALE 1 : 1
 DATE
 SIZE A4 PPROJECTION

X ±
 .X ± 0.40
 .XX ± 0.25
 .XXX ± 0.15
 ANG ±

照片框

ORDER INFORMATION

MTK-H-2Xxx-LF
 SERIES LEADFREE
 2X02:04 WAY
 2X25:50 WAY
 HOUSING

DESCRIPTION: Housing 2.00mm Crimp Type Dual Row