

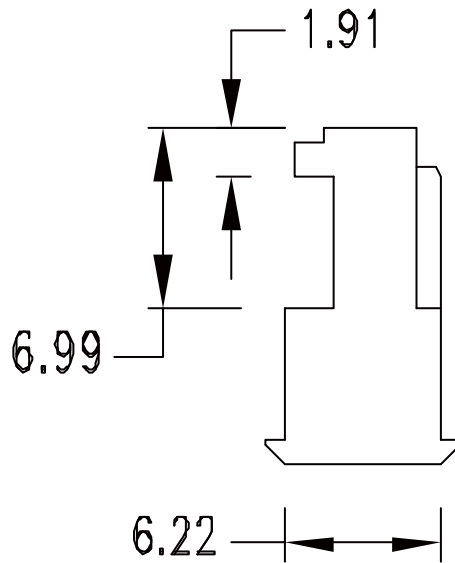
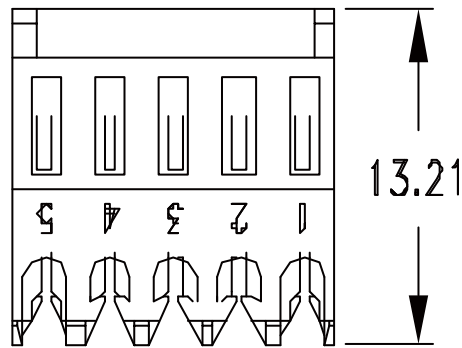
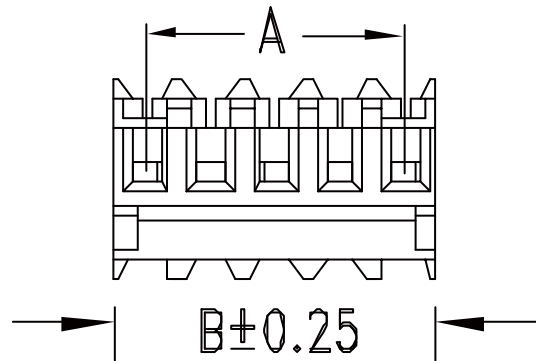
- Feed-Thru type
- With Polarizing Tabs

**Features:**

- 2 ~ 24 circuits available
- Housing material: UL 94V-2 nylon 66
- Terminal material: Tin-plated phosphor bronze
- With or without Polarizing Tabs
- With Locking Ramp
- Feed-Thru and Closed End type
- Wire range: AWG #24 ( Flat ribbon wire )
- Color: Red

**Specification:**

- Current rating: 3A AC, DC
- Voltage rating: 250V AC Max
- Contact resistance: Initial value/10mΩ Max.  
After environmental testing/20mΩ Max.
- Insulation resistance: 1000MΩ Min.
- Dielectric strength: 1500V AC/minute
- Ambient temperature range: -40°C ~ 105°C  
( Including temperature rise )



**Dimensional Information ( mm )**

Circuits	Dim. A	Dim. B
xx	2.54 x ( xx - 1 )	2.54 x ( xx )

Note: xx = Number of circuits, 02 ~ 24

**RoHS Compliant**

TOLERANCES ARE

**MORETHANALL**  
PCB CONNECTORS  
Cable ASSEMBLIES

DRAWING BY CY

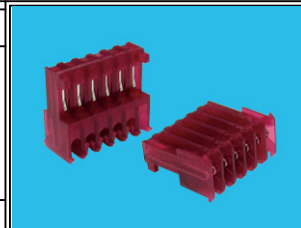
CHECKED BY GENIUS

UNIT / mm SCALE 1 : 1

DATE

SIZE A4 PROJECTION

X. ±  
.X ±  
.XX ±  
.XXX ±  
ANG ±



**ORDER INFORMATION**

MT-HC24TRD-xx-LF  
SERIES | HOUSING | TAB | LEADFREE  
RED | 24AWG | 02~24WAY  
FEED THROUGH

DESCRIPTION:

煜倫股份有限公司

www.morethanall.com