

Technical Data

Material:

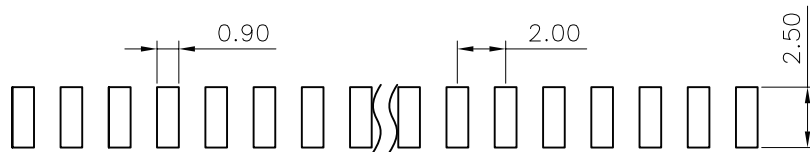
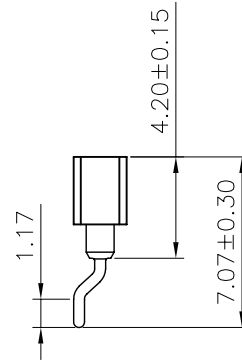
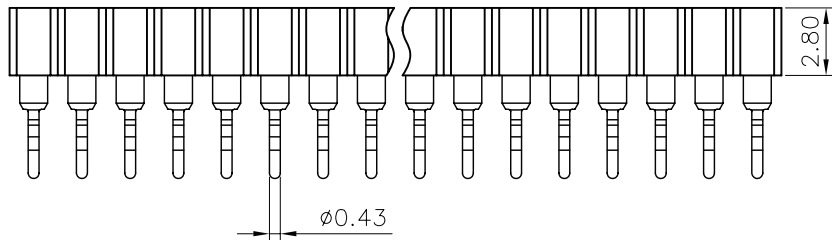
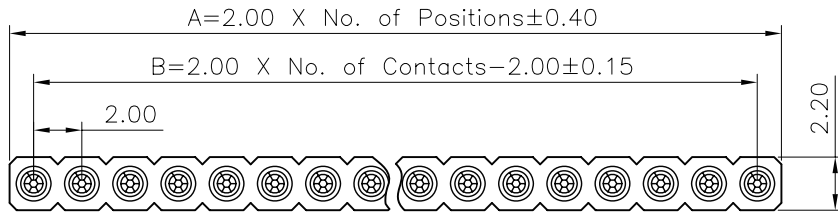
Pin(outer sleeve): Brass,machined CuZn38Pb2
 Clip(contact 6 finger): **Beryllium copper**,heat treated
 Plating(outer sleeve):
 Tin plated:2μm/80μ"Ni, 5μm/200μ"Sn
 Gold Plated:2μm/80μ"Ni,0.8 μ " gold
 Plating(contact): 2μm/80μ"Ni, gold or Tin plated
 Insulator(black): PPS (UL94V-0)

Electrical:

Current rating: 3Amps/contact max.
 Contact resistance: ≤4mΩ/contact
 Insulation resistance: ≥1000MΩ at V=100V
 Operating voltage: 60VAC/DC

Mechanical:

Average insertion force with steel pin of
 □0.43mm/0.17": <80g
 Average withdrawal force with steel pin of
 □0.43mm/0.17": >25g min.
 Mechanical life cycle:min.200
 Operating temperatures: Gold Plated:-55° C to+105° C
 Tin plated:-40° C to+105° C
 Soldering temperature: +260° C,10s max



P.C.B LAYOUT

RoHS Compliant

TOLERANCES ARE



煜倫股份有限公司

www.morethanall.com

DRAWING BY CY

CHECKED BY GENIUS

UNIT / mm

SCALE 1 : 1

DATE

SIZE A4

PPOJECTION

X, ±
 .X ±
 .XX ±
 .XXX ±
 ANG ±

照片框

ORDER INFORMATION

MSS-W-1Xxx-LF
 SERIES | LEADFREE
 1X02:04 WAY
 1X40:80 WAY
 90°SMT

DESCRIPTION: 2.0mmPitch SIP Sockets Single Row 卧式SMT Pin Length 7.40mm