

# Technical Data

## Material:

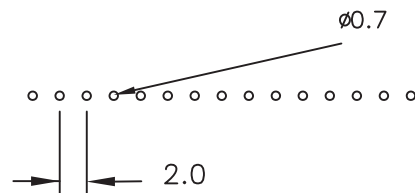
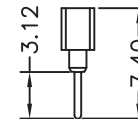
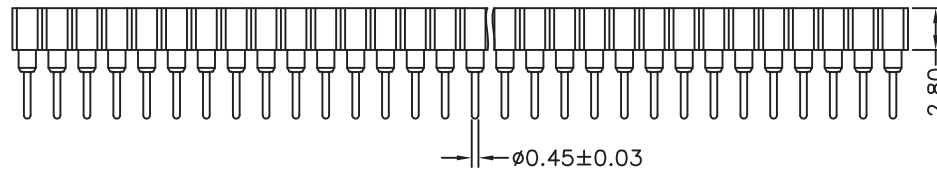
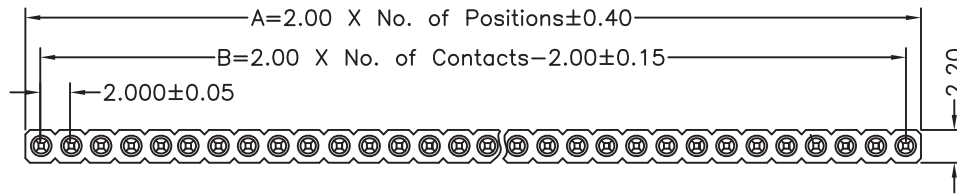
Pin(outer sleeve): Brass,machined CuZn38Pb2  
 Clip(contact 6 finger): Beryllium copper,heat treated  
 Plating(outer sleeve):  
 Tin plated:2μm/80μ"Ni, 5μm/200μ"Sn  
 Gold Plated:2μm/80μ"Ni,0.8 μ " gold  
 Plating(contact): 2μm/80μ"Ni, gold or Tin plated  
 Insulator(black): PPS (UL94V-0)

## Electrical:

Current rating: 3Amps/contact max.  
 Contact resistance: ≤4mΩ/contact  
 Insulation resistance: ≥1000MΩ at V=100V  
 Operating voltage: 60VAC/DC

## Mechanical:

Average insertion force with steel pin of  
 □0.43mm/0.17": <75g  
 Average withdrawal force with steel pin of  
 □0.43mm/0.17": >25g min.  
 Mechanical life cycle:min.200  
 Operating temperatures: Gold Plated:-55°C to+105°C  
 Tin plated:-40°C to+105°C  
 Soldering temperature: +260°C,10s max



P.C.B. Layout

RoHS Compliant

TOLERANCES ARE

**MORETHANALL**  
 PCB CONNECTORS  
 Cable ASSEMBLIES

煜倫股份有限公司

www.morethanall.com

DRAWING BY CY

CHECKED BY GENIUS

UNIT / mm

SCALE 1 : 1

DATE

SIZE A4

PJECTION

X. ± 0.35  
 .X ± 0.20  
 .XX ± 0.15  
 .XXX ± 0.05  
 ANG ±

照片框

ORDER INFORMATION

MSS-D-1Xxx-LF  
 SERIES | LEADFREE  
 1X02:02 WAY  
 1X40:40 WAY  
 DIP 180°

DESCRIPTION: