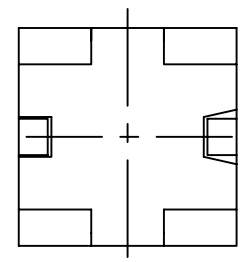
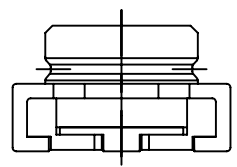
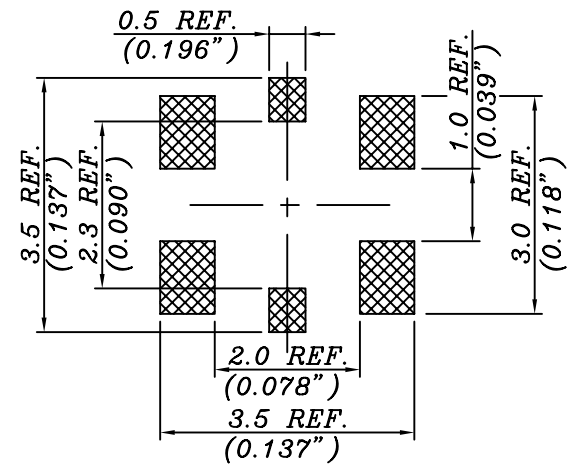


A-A SECTION



MSH-JV-50-LF
LEADFREE
RoHS Compliant



RECOMMENDED P.C.B PATTERN

1. DIMENSION:

Unless otherwise specified all Dimensions in millimeters & inches. Values in brackets are inches equivalents.

2. PART LIST

- GROUND CONTACT: BRASS WITH GOLD PLATING
- UPPER INSULATOR: LCP (UL94V-0)
- LOWER INSULATOR: LCP (UL94V-0)
- SPRING CONTACT: BERYLLIUM COPPER WITH GOLD PLATING
- RETENTION CONTACT: BERYLLIUM COPPER WITH GOLD PLATING

3. CHARACTER

- MECHANICAL CHARACTERISTICS:**
- DURABILITY--500 CYCLES
- ELECTRICAL CHARACTERISTICS:**
- NORMAL IMPEDANCE-- 50 OHMS
- FREQUENCY RANGE-- V.S.W.R 1.3dB Max./ 0~6 GHz
- CONTACT RESISTANCE 0.05 OHMS MAX.
- DIELECTRICAL WITHSTANDING VOLTAGE--300V AC.
- INSULATION RESISTANCE-- 500 MEGOHMS MIN.
- ENVIRONMENTAL CHARACTERISTICS:**
- TEMPERATURE RANGE-- -40°C TO +90°C



PART NO. MSH-JV-50		CHECKED BY CY		TOLERANCES ARE		DESCRIPTION: MICROWAVE SWITCH CONNECTOR			
DWG NO. MSH-JV-50		DRAWING BY		.X ± 0.2		AREA	REVISIONS	HK	DATE
FILE NO.		PROJECTION		.XX ± 0.1					
UNIT / mm		SCALE 1:1		.XXX ± 0.01					
				AWG					

焯倫股份有限公司