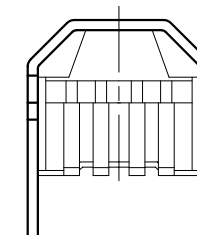
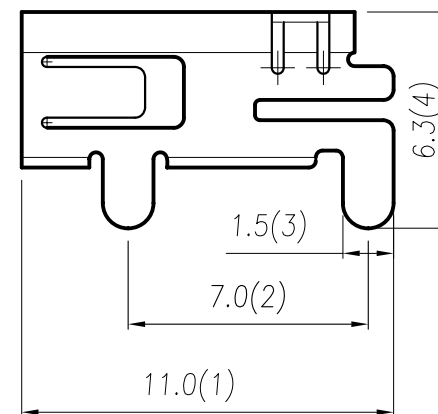
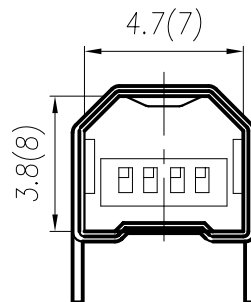


Recommend P.C.B LAYOUT



備註/Note:

1. 安規/Safety:

- 1-1. 規格/Rating: AC 5V/1A
- 1-2. 絕緣阻抗/Insulation Resistance: 100M ohm Min at DC 500V
- 1-3. 絕緣耐壓/Dielectric Withstanding Voltage: AC 100V for 1 minute
- 1-4. 接觸阻抗/Contact Resistance :30m ohm or less

2. 材質/Material:

- 2-1. 端子/PIN: 磷銅/PHOSPHOR BRONZE; 金 15u"/GOLD 15u"
- 2-2. 膠芯/HOUSING: NYLON
- 2-3. 鐵殼/SHELL: 磷銅/PHOSPHOR BRONZE; 鍍錫 /TIN

**RoHS Compliant**

TOLERANCES ARE

**MORETHANALL**  
PCB CONNECTORS  
Cable ASSEMBLIES

煜倫股份有限公司

www.morethanall.com

DRAWING BY CY

CHECKED BY GENIUS

UNIT / mm SCALE 1 : 1

DATE

SIZE A4

P PROJECTION

X, ±  
.X ±  
.XX ±  
.XXX ±  
ANG ±



**ORDER INFORMATION**

MSB-SW2-4B-LF  
SERIES | LEADFREE  
4 PIN B TYPE  
2 METAL FOOT  
90° SMT  
FEMALE

DESCRIPTION: MINI USB B TYPE 母座 成品圖(DIP)