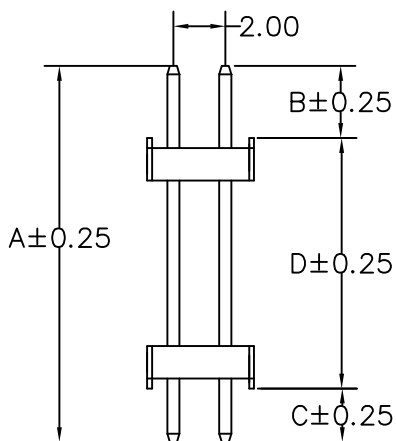
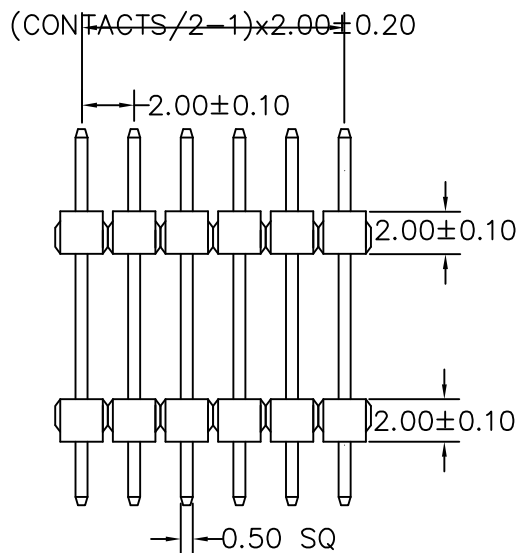


RECOMMENDED P.C.B LAYOUT



CONTACTS	2X21
2X2	2X22
2X3	2X23
2X4	2X24
2X5	2X25
2X6	2X26
2X7	2X27
2X8	2X28
2X9	2X29
2X10	2X30
2X11	2X31
2X12	2X32
2X13	2X33
2X14	2X34
2X15	2X35
2X16	2X36
2X17	2X37
2X18	2X38
2X19	2X39
2X20	2X40

MATERIAL  
 HOUSING : PBT,UL94V-0  
 CONTACT : COPPER ALLOYS  
 PLATED : GOLD-FLASH  
 COLOR : BLACK

SPECIFICATION  
 CURRENT: 1A  
 OPERATING TEMPERATURE: -55°C TO +105°C  
 CONTACT RESISTANCE : 20 MILLIOHMS MAX  
 INSULATION RESISTANCE : 5000 MEGAOHMS MIN  
 DIELECTRIC STRENGTH : 1000 VA

A: 25.10 mm B: 9.00 mm C: 2.10 mm D: 14.00 mm

RoHS Compliant

TOLERANCES ARE

**MORETHANALL**  
 PCB CONNECTORS  
 Cable ASSEMBLIES

DRAWING BY CY

X. ±  
 .X ± 0.38

CHECKED BY GENIUS

.XX ± 0.25

UNIT / mm

SCALE 1:1

.XXX ±

ANG ± 5°

DATE

SIZE A4

PJECTION

照片框

ORDER INFORMATION

MSB-D2519021-2Xxx-LF

SERIES

LEADFREE

2X02:04 WAY

2X40:80 WAY

DIP 2.1mm

DIP 180°

DIP 9.0mm

LONG 25.10mm

煜倫股份有限公司

www.morethanall.com

DESCRIPTION: PIN HEADER 2.0