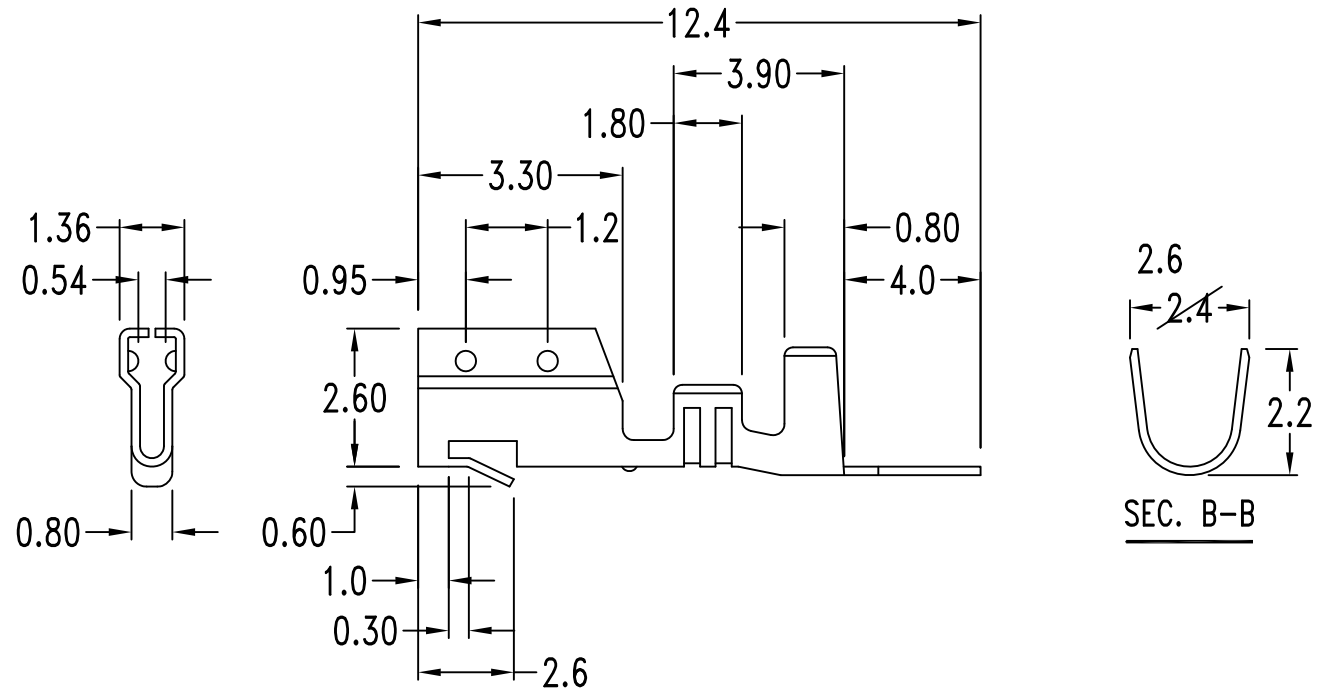
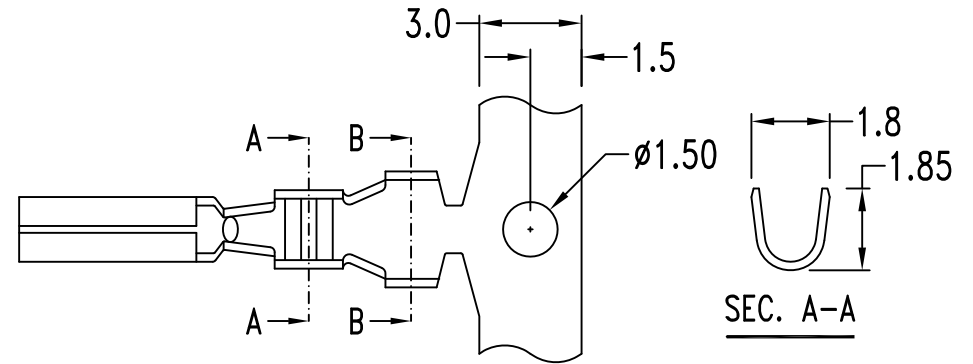


### Features:

- Finished: Tin-plated
- Wire range: #22 ~ #28 AWG
- Thickness: 0.2mm
- Q'ty: 10000 PCS/Reel

### Specification:

- Current rating: 3A
- Voltage rating: 250V AC, DC
- Contact resistance: 20mΩ Max.
- Temperature range: -40°C ~ 105°C



RoHS Compliant

TOLERANCES ARE

**MORETHANALL**  
PCB CONNECTORS  
Cable ASSEMBLIES

煜倫股份有限公司

www.morethanall.com

DRAWING BY CY

CHECKED BY GENIUS

UNIT / mm

SCALE 1 : 1

DATE

SIZE A4

PPOJECTION

X, ±  
.X ± 0.40  
.XX ± 0.25  
.XXX ± 0.08  
ANG ±

照片框

ORDER INFORMATION

MS-T-22-LF  
SERIES | LEADFREE  
22~28AWG  
TERMINAL

DESCRIPTION: