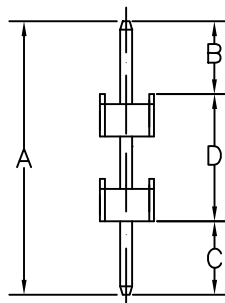
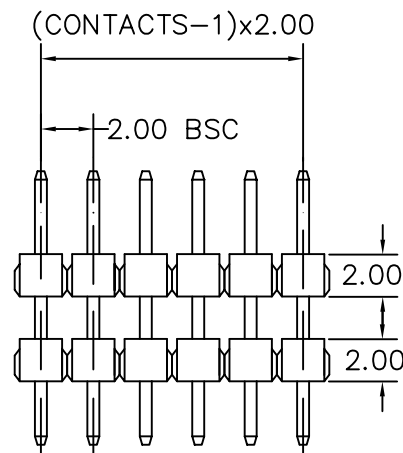


RECOMMENDED P.C.B LAYOUT



A: 8.20 mm B: 2.20 mm C: 3.00 mm D: 3.00 mm

MATERIAL

HOUSING : THERMOPLASTIC UL94V-0

CONTACT : COPPER ALLOYS

SPECIFICATION

CURRENT: 1A

OPERATING TEMPERATURE: -55°C TO +105°C

CONTACT RESISTANCE : 20 MILLIOHMS MAX

INSULATION RESISTANCE : 5000 MEGAOHMS MIN

DIELECTRIC STRENGTH : 1000 VAC MIN

DURABILITY : 100 CYCLES

RETENTION FORCE : 700g MIN

FINISH

CONTACT PLATING SEE ORDER INFORMATION

CONTACTS	1X21	1X11	1X31
1X2	1X22	1X12	1X32
1X3	1X23	1X13	1X33
1X4	1X24	1X14	1X34
1X5	1X25	1X15	1X35
1X6	1X26	1X16	1X36
1X7	1X27	1X17	1X37
1X8	1X28	1X18	1X38
1X9	1X29	1X19	1X39
1X10	1X30	1X20	1X40

RoHS Compliant

TOLERANCES ARE

MORETHANALL
PCB CONNECTORS
Cable ASSEMBLIES

DRAWING BY CY

CHECKED BY GENIUS

UNIT / mm

SCALE 1 : 1

DATE

SIZE A4

X, ±

.X ±

.XX ±

.XXX ±

ANG ±

P PROJECTION

照片框

ORDER INFORMATION

MS-D0823022-1Xxx-LF
SERIES | LEADFREE
1X02:02WAY
1X40:40WAY
DIP 2.2mm
CONTACT 3.0mm
TOTAL 8.2mm
DIP180°

DESCRIPTION:

煜倫股份有限公司

www.morethanall.com