

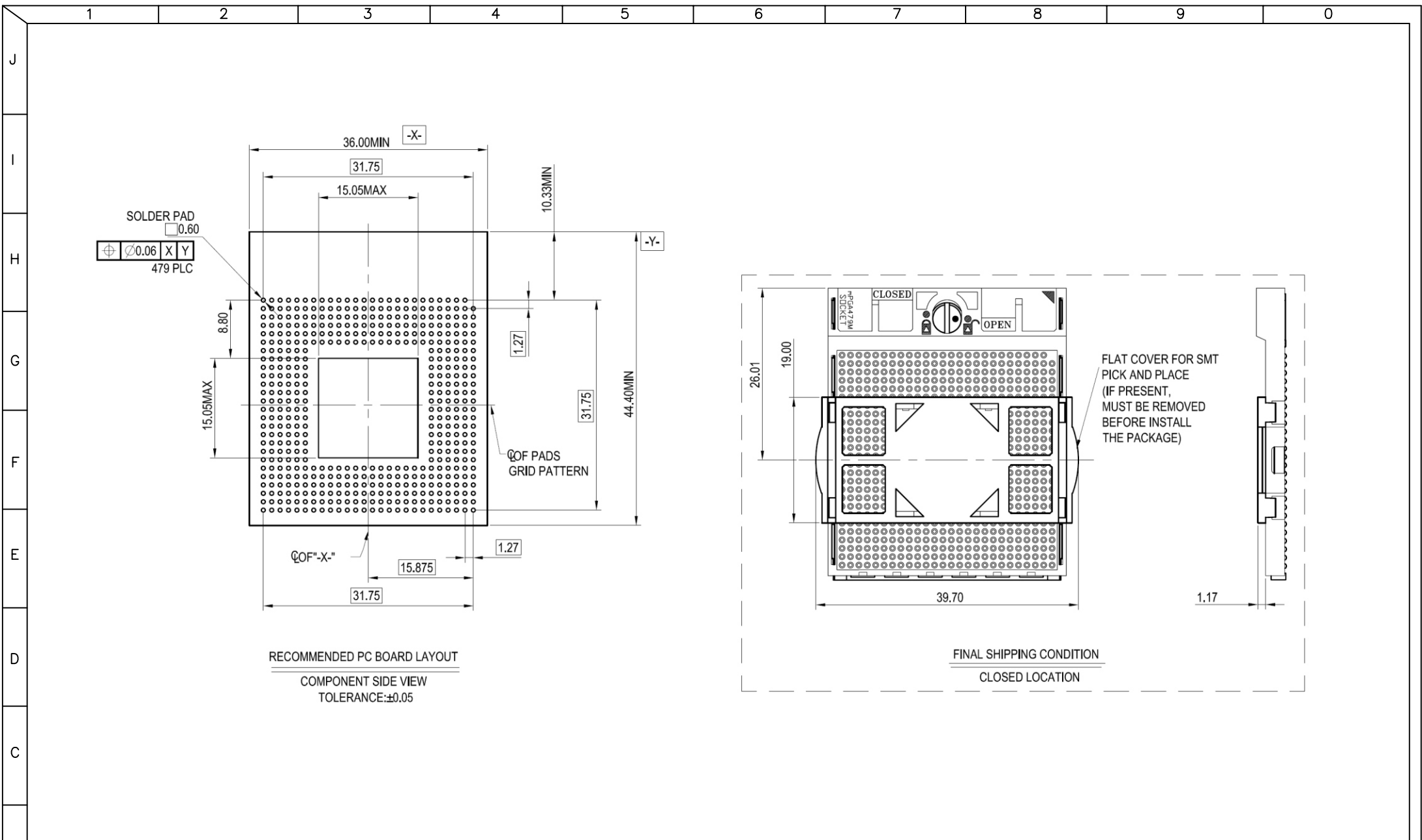
NOTE:
 1.BASE: HIGH TEMPERATURE THERMOPLASTIC. UL94V-0, BLACK.
 2.COVER: HIGH TEMPERATURE THERMOPLASTIC. UL94V-0, COLOR:SEE TABLE.
 3.FLAT COVER: HIGH TEMPERATURE THERMOPLASTIC ,BLACK.
 4.CONTACT: COPPER ALLOY
 5.OTHERS: STAINLESS STEEL.
 6.PLATING: SELECTIVE GOLD OVER CONTACT AREA,GOLD FLASH OVER SOLDER AREA, PREPLATED NICKEL OVER ALL.
 7.COVER HOUSING ACTUATION NOMINALDISTANCE : 0.65mm
 8.USER INTERFACE:
 1)BLADE SCREW DRIVER TO ACTUATE;
 2)CLOCKWISE TO "CLOSE",COUNTERCLOCKWISE TO "OPEN";
 3)CAM ROTATION ANGLE (OPEN-CLOSE): 180 DEGREES
 9.SOCKET WILL ACCEPT P.G.A PACKAGE WITH A PIN (0.305±0.025 AND A LENGTH OF 2.03±0.08 LOCATED ON A TRUE POSITION OF (0.25 AND A LENGTH OF 2.03±0.08 LOCATED ON A TRUE POSITION OF (0.25 TESTING.
 11. ACCORDING TO THE ENVIROMENTAL REQUIREMENT, WARRANTY THE CONROLLED HAZARDOUS SUBSTANCE SHOULD BE MEET ROHS'S SPECIFICATION.

MPGA-VS-479-LF
 LEADFREE

RoHS Compliant

MORETHANALL
 CONNECTORS
 ASSEMBLIES
 焯倫股份有限公司

| | | | | | |
|----------------------|-----------|---------------|------------|--|---------------|
| PART NO. MPGA-VS-479 | | CHECKED BY CY | | TOLERANCES ARE .X ± 0.2 .XX ± 0.1 .XXX ± AWG | DESCRIP TION: |
| DWG NO. MPGA-VS-479 | | DRAWING BY | | | |
| FILE NO. | UNIT / mm | SCALE 1:1 | PROJECTION | AREA | REVISIONS |
| | | | | HK | DATE |



RECOMMENDED PC BOARD LAYOUT
 COMPONENT SIDE VIEW
 TOLERANCE: ±0.05

FINAL SHIPPING CONDITION
 CLOSED LOCATION



PART NO. MPGA-VS-479

DWG NO. MPGA-VS-479

CHECKED BY CY

TOLERANCES ARE

DESCRIP TION:

FILE NO.

DRAWING BY

.X ± 0.2
.XX ± 0.1
.XXX ±
AWG

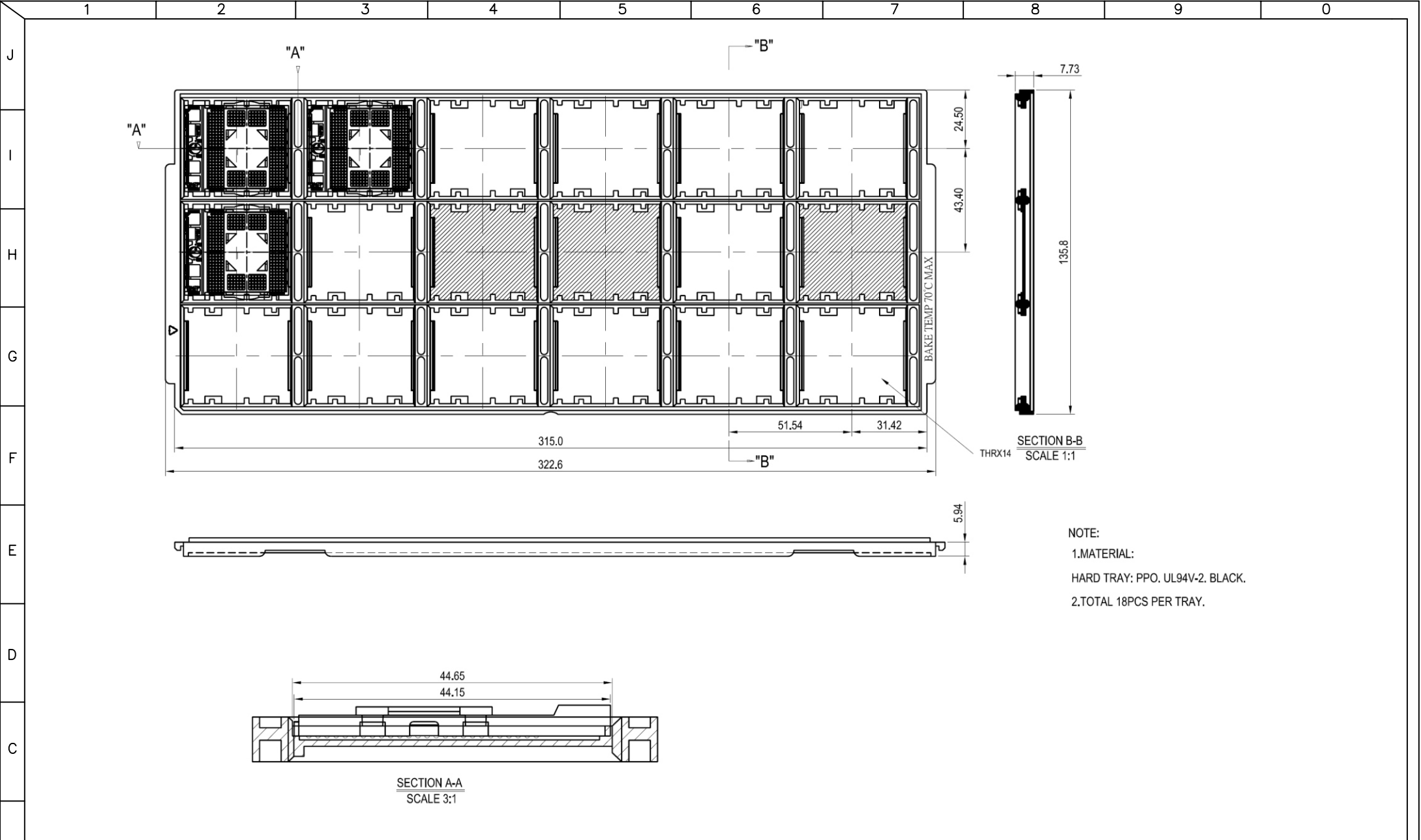
| | | | |
|------|-----------|----|------|
| AREA | REVISIONS | HK | DATE |
|------|-----------|----|------|

煜倫股份有限公司

UNIT / mm

SCALE 1:1

PROJECTION



SECTION B-B
SCALE 1:1

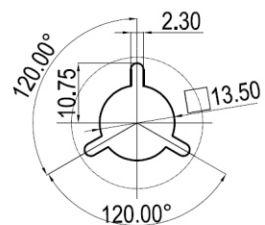
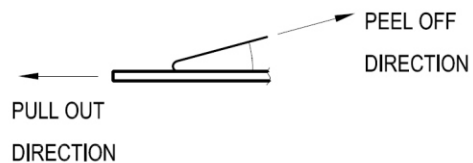
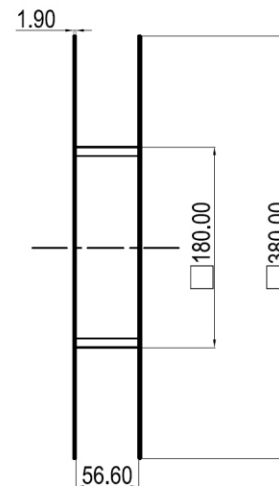
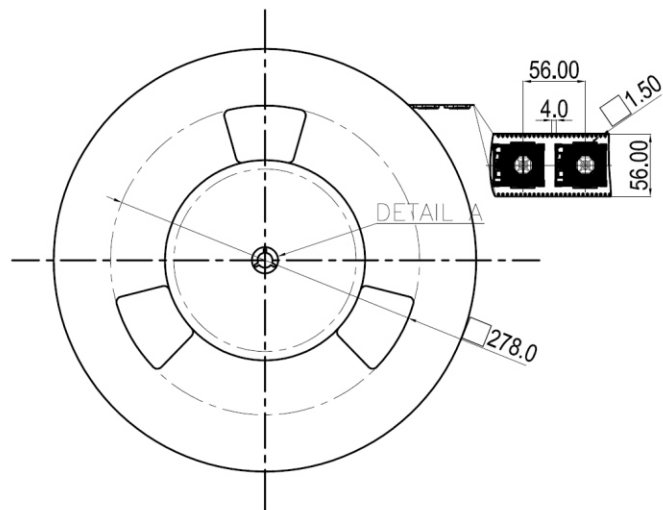
NOTE:
 1.MATERIAL:
 HARD TRAY: PPO. UL94V-2. BLACK.
 2.TOTAL 18PCS PER TRAY.

SECTION A-A
SCALE 3:1

M MORETHANALL
CONNECTORS
ASSEMBLIES

煜倫股份有限公司

| | | | | | | | |
|----------------------|-----------|---------------|--|--------------|----|------|--|
| PART NO. MPGA-VS-479 | | CHECKED BY CY | TOLERANCES ARE .X ± 0.2 .XX ± 0.1 .XXX ± AWG | DESCRIPTION: | | | |
| DWG NO. MPGA-VS-479 | | | | | | | |
| FILE NO. | | PROJECTION | AREA | REVISIONS | HK | DATE | |
| UNIT / mm | SCALE 1:1 | | | | | | |



DETAIL:A
SCALE 5:1

NOTE:

- 1.THE QUANTITY TO BE PACKED PRODUCT IS 180PCS PER REEL
- 2.PEELING OFF FORCE OF COVER TAPE:0.1N~0.7N
- 3.MATERIAL: CARRIER TAPE: POLYPROPLENE
COVER TAPE: PET,PE,PEF
REEL: PAPER



PART NO. MPGA-VS-479

DWG NO. MPGA-VS-479

CHECKED BY CY

TOLERANCES ARE

DESCRIP TION:

FILE NO.

DRAWING BY

.X ± 0.2
.XX ± 0.1
.XXX ±
AWG

AREA

REVISIONS

HK

DATE

煜倫股份有限公司

UNIT / mm

SCALE 1:1

PROJECTION



| | | | |
|--|--|--|--|
| | | | |
|--|--|--|--|